

YACHTING BOOKS
AN EXCLUSIVE SELECTION

PICTURE PRESENTATION

YACHT FOR SALE

Kolohe

37' • CABO • 1999



HONOLULU, HAWAII





















WD BILGE PUMP

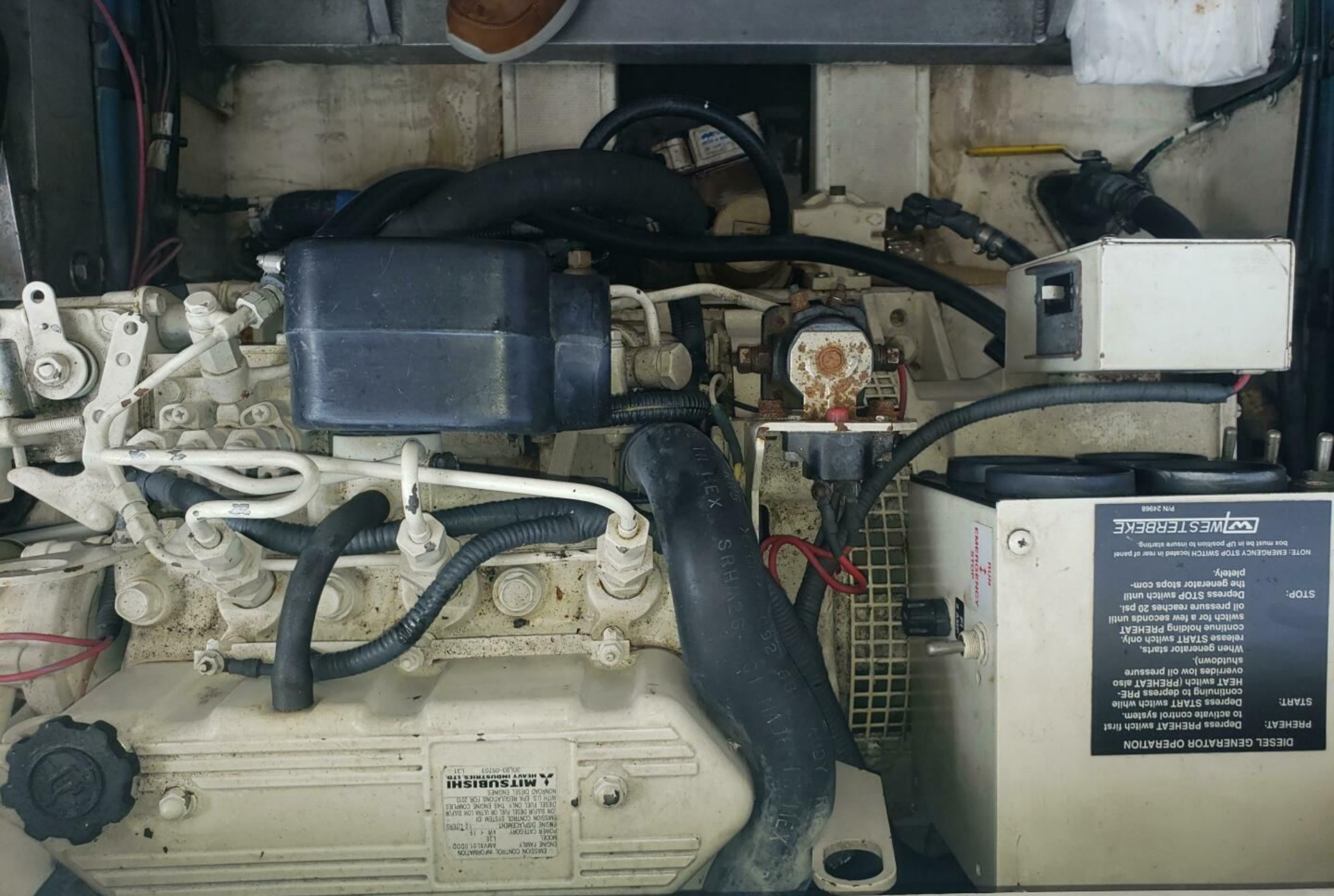
Rule
SOLE-A-MATIC PLUS
AUTOMATIC FLOAT SWITCH
MAX. 20 AMP 12-24-32 VDC
CE

INTERPHASE TECHNOLOGIES, INC.









EMISSION CONTROL INFORMATION
 ENGINE FAMILY: A9V101 0000
 MAKE: MITSUBISHI
 POWER DATE/CODE: M1 & 11
 ENGINE DISPLACEMENT: 18.1 LITERS
 EMISSION CONTROL SYSTEM: 01
 ON-BLUE DIESEL FUEL OR ULTRA LOW SULFUR
 DIESEL FUEL ONLY. THE ENGINE COMPLIES
 WITH U.S. EPA REGULATIONS FOR 2010
 NONROAD DIESEL ENGINES
MITSUBISHI
 HEAVY INDUSTRIES, LTD.
 300-90-09103 L31

DIESEL GENERATOR OPERATION

PREHEAT: Depress PREHEAT switch first to activate control system.
START: Depress START switch while continuing to depress PRE-HEAT switch (PREHEAT also overrides low oil pressure shutdown).
STOP: When generator starts, release START switch only. continue holding PREHEAT switch for a few seconds until oil pressure reaches 20 psi. Depress STOP switch until the generator stops completely.

NOTE: EMERGENCY STOP SWITCH located in rear of panel. Box must be in UP position to insure starting.

PM 24968



