

YACHTING BOOKS
AN EXCLUSIVE SELECTION

PICTURE PRESENTATION

YACHT FOR SALE

2000 Sea Ray 410 Sundancer

41' • SEA RAY • 2000

















Sea Ray













WARNING
GASOLINE VAPORS CAN EXPLODE
CAUSING INJURY OR DEATH

BEFORE STARTING ENGINE,
CHECK ENGINE COMPARTMENT BILGE
FOR GASOLINE OR VAPORS, AND
OPERATE BLOWER FOR FOUR MINUTES, AND
VERIFY BLOWER OPERATION

RUN BLOWER WHEN VESSEL IS OPERATING
BELOW CRUISING SPEED

AUTOMATIC EXTINGUISHING SYSTEM

1 LIGHT ON SYSTEM CHARGED
2 LIGHT OFF SYSTEM DISCHARGED
3 IF SYSTEM RECHARGES
BUILT DOWN IN CHARGE
BLOWER, AND ELECT SYSTEMS

HATCH
LIFT

PORT IGN
START/STOP

EMERG
START

STBD IGN
START/STOP

BILGE
BLOWERS

ENGINE
SYNC

HORN

BILGE PUMPS

FWD

AFT

RUNNING

ANCHOR

DIMMER

LIGHTS

TRANSOM

SPOILER

BILGE

WIPERS

PORT

STBD

WINDSHIELD

VENT

ELECT

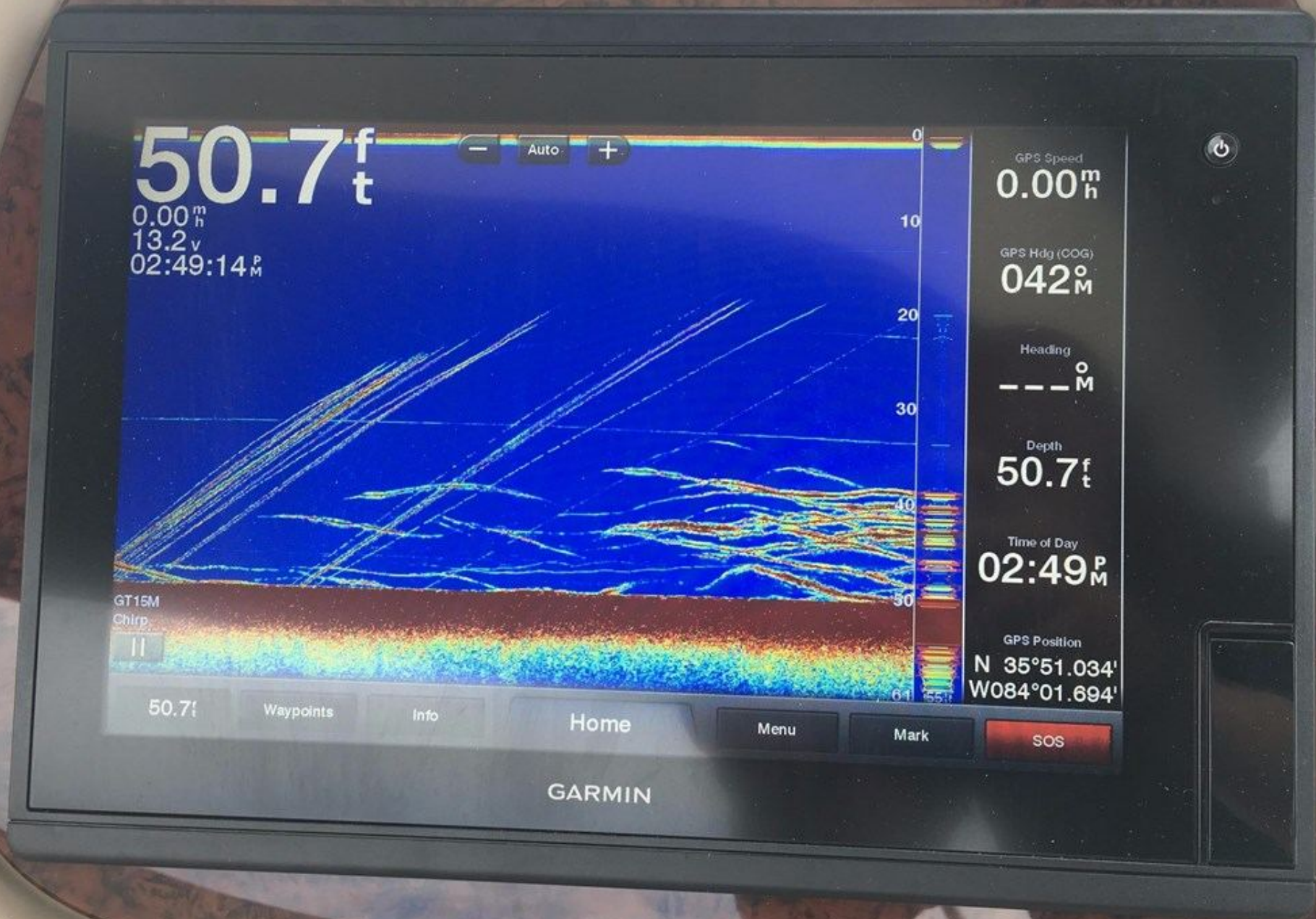
AUTOPILOT

SWIM
PLATFORM

ACCY

WINDLASS

MAIN
CONTROL



50.7^f_t
0.00^m_h
13.2^v
02:49:14^P_M

- Auto +

GPS Speed
0.00^m_h

GPS Hdg (COG)
042^o_M

Heading
-- --^o_M

Depth
50.7^f_t

Time of Day
02:49^P_M

GPS Position
N 35°51.034'
W084°01.694'

GT15M
Chirp
||

50.7f

Waypoints

Info

Home

Menu

Mark

SOS

GARMIN



