

YACHTING BOOKS

AN EXCLUSIVE SELECTION

PICTURE PRESENTATION

YACHT FOR SALE

Southside

45' • SEA RAY • 2005

































Raymarine

Depth 7.8ft

NAVIGATION

SOG 0.0 kts

BTW ---

ACTIVE WPT --

Restart XTE

WPT ETA

DTW

270°

50ft

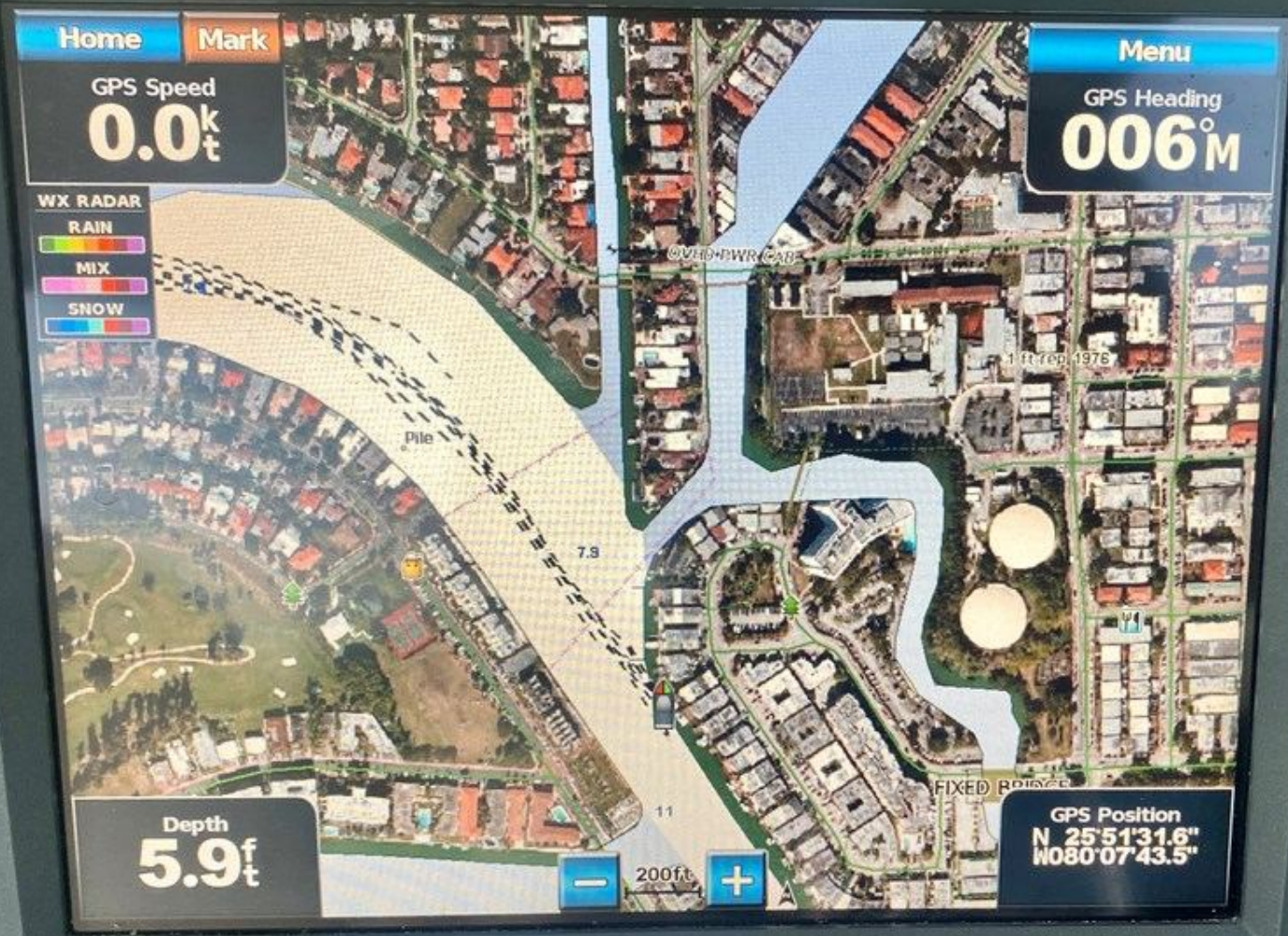
Target Loran

40° 30' 20' 10' 10' 20' 30' 40'

Power button icon



STBD ION BLOWER SOUTH SIDE YACHTING CRUISE BOOKS + RPM SLOW IDLE HORN BILGE PUMP FWD AFT HATCH LIFT RUNNING ANCHOR DIMMER SPOT OVERHEAD BILGE WIPERS ON/OFF/INT (L)/MED/HI WIND WIPER WASH WIPER WIPER



GARMIN



FUSION

MS-NRX300



BT

SELECT DEVICE

