



YACHT FOR SALE

World Cat 320 EC

32' • WORLD CAT • 2015

















GARMIN

GARMIN

GARMIN

WORLD CAT
PROTECTOR SYSTEM
STANDARD 1000
SERVO CONTROL

NOTICE
BY WAY OF NOTICE
THE FOLLOWING
INFORMATION
IS TO BE KEPT
ON THE MOTOR

WORLD CAT
PROTECTOR SYSTEM
STANDARD 1000
SERVO CONTROL



FOR SALE
WILSON

WORLD CAT
PREFERRED SPA EQUIP
STANDARD'S USING
GENUINE COMPONENTS

NOTICE
IF YOU ARE
IN THE WATER
AND YOUR BOAT
IS NOT EQUIPPED
WITH A LIFE RING
OR OTHER
SAFETY EQUIPMENT
YOU MAY BE
IN VIOLATION
OF FEDERAL
REGULATIONS
AND SUBJECT
TO PENALTIES
AND FINES



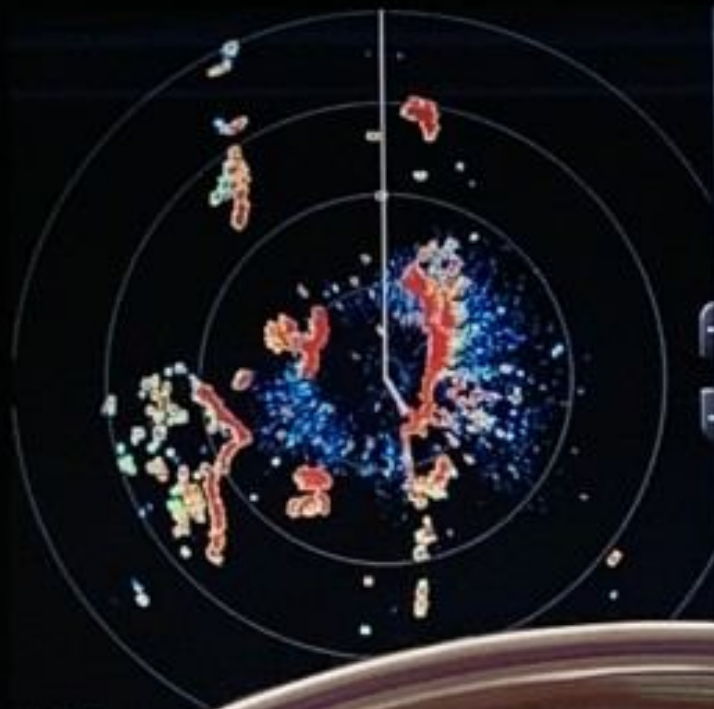
FOR SALE
JOHNSON

WORLD CAT
MEETS U.S. EPA E-VP
STANDARDS USING
CERTIFIED COMPONENTS

NOTICE
OWNER'S MANUAL

WARNING
ROTATING PROPELLER
SERIOUS INJURY
SHUT OFF ENGINES
BEFORE GETTING
NEAR





Rain Clutter

55%

100%
90%
80%
70%
60%
50%
40%
30%
20%

Up
Down
Off

A vertical slider control for 'Rain Clutter'. The slider is currently set at 55%. To the right of the slider are three buttons: 'Up', 'Down', and 'Off'. The 'Up' button is currently selected, indicated by a horizontal line above it.

DRB: 77%
RAB: 55%

Info

Home

Menu

Mark

GARMIN



GPS Speed 0.00kts
 GPS Hdg (COG) 359M
 Heading 192M
 Depth 13.0f
 Time of Day 10:03A
 GPS Position N 26°04.360' W097°13.078'

Engage Waypoints Info Home Menu Mark SOS

Standby
 192M

GPS Speed 0.00kts
 GPS Hdg (COG) 359M
 Depth 13.0f
 GPS Position N 26°04.360' W097°13.078'

Engage Waypoints Info Home Menu Mark SOS

EXPLORER

MS-MB300

RPM 12.9 12.9 0.0
 FUEL 0.0

COCKPIT LIT, COURTESY LIT, FORWARD BILGE, FORWARD BILGE, LNEWDL, RAW WATER, FRESH WATER, LIGHT, AFT BILGE, AFT BILGE, AFT BILGE, WIPER CONTROL

NOTICE
 For maximum enjoyment and safety, please read the Owner's Manual before using this product.

BOATER'S CHECKLIST
 1. Check fuel level
 2. Check engine oil level
 3. Check battery voltage
 4. Check bilge pump operation
 5. Check horn operation
 6. Check anchor operation
 7. Check VHF radio operation
 8. Check fire extinguisher location
 9. Check first aid kit location
 10. Check personal flotation devices (PFDs) location
 11. Check safety equipment location
 12. Check emergency contact information
 13. Check weather conditions
 14. Check local regulations
 15. Check boat condition

TRIP

Reset All

Reset

USED

107.2

gal

Reset

TRIP Distance

126.9

mile

Reset

TRIP Hours

8.9

h

Reset

Total Hours

488.8

h

SET

Confirm

CANCEL

Exit screen.







