

YACHTING BOOKS

AN EXCLUSIVE SELECTION

PICTURE PRESENTATION



YACHT FOR SALE

Famille

37' • PURSUIT • 2020













GPS Speed **0.00 m/h**

Bearing **---**

Fuel Level **61%**

Depth **8.9 f**

Time of Day **02:17 PM**

GPS Position
N 27°27.930'
W 080°19.746'

Map Labels: Taylor Creek, FLORIDA EAST COAST, PA (Reported), CAUTION, 500ft, 100 MILES PER DAY

Buttons: Waypoints, Info, Home, Menu, Mark, SOS

GARMIN

GPSMAP XSV

8.9 f

70.39 f
0.00 m
12.0 v

0.00%

007%

61%

8.9 f

Time of Day **02:17 PM**

GPS Position
N 27°27.932'
W 080°19.746'

Buttons: Home, Menu, Mark, SOS

GARMIN

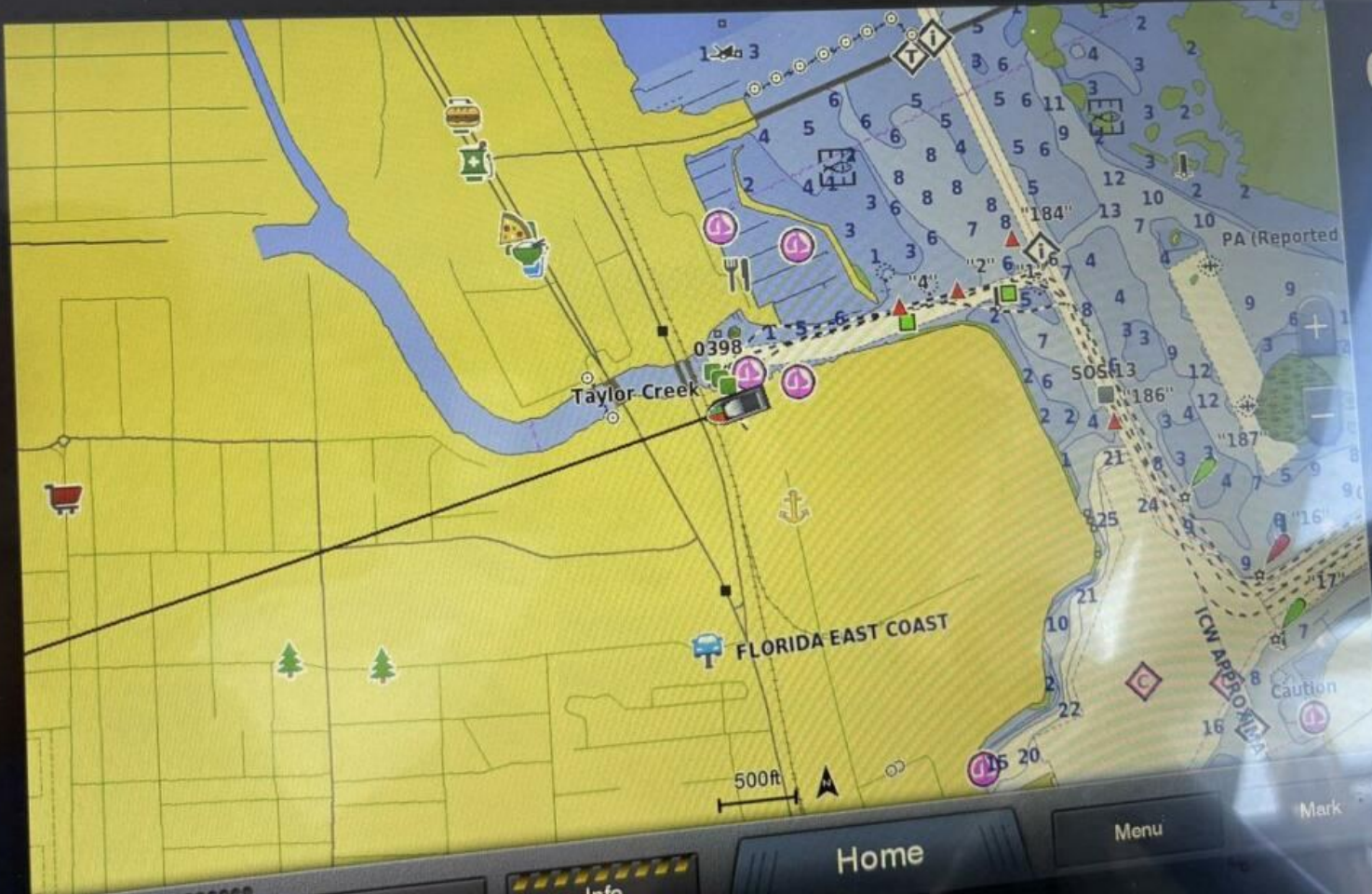
Standby

240 255

26

Buttons: DEPLOY, RETRIEVE, SPEAKER LIGHTS, UNDER LIGHTS, LAMP, KEYS, EXIT

GPSMAP



GPS Speed
0.00 m/h

Bearing
0 M

Fuel Level
61%

Depth

Time of Day
02:17 P

GPS Position
N 27°27.930'
W 080°19.746'

SOS

Engage

Waypoints

Info

Home

Menu

Mark

GARMIN

Boat Status

TANK



SPEED

mph

0.0

ECON

mpg

0.0

FLOW

gph

0.0

USED

gal

4717

TRIP

mile

4293

P TRIP

h

790.7

S TRIP

h

789.7

C TRIP

h

786.7

.....

Engage

Waypoints

Info

Home

Menu

Mark

SOS

GARMIN

GARMIN



















