

80 Sunreef Power Hull #8



2021 SUNREEF 80 Sunreef Power

LOA:	80' (24.38m)	Build Year/Model Year:	2020 / 2021
Beam:	39' 4" (11.99m)	Builder:	SUNREEF
Max Draft:	5' 7" (1.70m)	Type:	Catamaran
Speed:	Cruising 12 Knots (14 MPH) Max 24 Knots (28 MPH)	Price:	\$6,750,000 USD
		Location:	Gdansk, Poland

Additional Specifications For 80 Sunreef Power Hull #8:

LOA:	80' (24.38m)	Delivery/Model	2021
Beam:	39' 4" (11.99m)	Year:	
Max Draft:	5' 7" (1.70m)	Year Built:	2020
Hull Material:	GRP	Builder:	SUNREEF
Tonnage:		Model:	80 Sunreef Power
Range At Cruise	3500	Type:	Catamaran
Speed:		Engines:	1200 HP, Twin, 2020, Inboard, Diesel, MAN,
Speed:	Cruising 12 Knots (14 MPH) Max 24 Knots (28 MPH)	Staterooms:	4
Fuel Capacity:	2,641.72 Gal (10,000.00 L)	Sleeps:	8
Water Capacity:	422.68 Gal (1,600.00 L)	Heads:	5
Location:	Gdansk, Poland	Crew Quarters:	2
Price:	\$6,750,000 USD	Classifications:	
Tax Status:	No Duty Paid	MCA: ISM:	

Overview

Hull #8 is available with a November 2020 delivery with a 2021 hull ID giving her excellent retail value when considering her pricing and looking at what ARIA, the 2019 Hull #1 recently sold for in May of this year.

Final delivery dates are will be determined once contracts are finalized.

The technical details outlined in this listing include almost every major option available but a client can still add or remove specific options at this stage of construction.

The general arrangement layout shown in this brochure is the preferred layout suggested by both Sunreef & myself after spending significant amount of time on ARIA and seeing what can be improved upon. This can also be changed by the client but is time sensitive.

Proposed Options List for Hull #8

MODEL VERSION

Sunreef 80Y Galley down (fully open saloon, maser cabin down, VIP cabin, 2x guest cabin, crew cabin)

FEATURES INCLUDED

Standard

Hulls, deck, flybridge and all structural bulkheads constructed of E-glass sandwich laminate with reinforcement by infusion process. Hull outer osmosis protection in vinylester resin

Navigation station on flybridge and in saloon
Hydraulic aft platform for tender up to 800kg

1 - GENERAL OPTIONS

1.2 Hydraulic aft platform upgrade to 1200kg

2 - MECHANICS

Standard

2 engines John Deere 6135AFM85 (575hp) with propellers
Stainless steel shafts
2 fuel tanks of 5000L each
Engine speed controls on flybridge and in saloon
Engine room sound insulation

Options

2.3 2 engines 1200hp (MAN) with pair of propellers instead of 575hp John Deere
2.4 Extension of fuel tanks to 2x 8000L (from 2x 5000L)
2.5 2 electric pumps for changing the oil

- 2.6 Antivibration system (thrust bearing with CV joint)
- 2.7 Bow thrusters (2 pcs)
- 2.8 JMS System (needs option bow thrusters)
- 2.9 Proportional thrusters (needs option 2.7)
- 2.10 Trolling valves on gearboxes
- 2.11 Water sensors for fuel filters
- 2.12 Fuel polishing system, one unit
- 2.13 Rope cutters on the propeller shafts

3 - DECK GEAR

Standard

Manual gangway
 Flush hatches on deck for forepeaks
 1 swim ladder on the skirt
 2 aft capstans for mooring
 Garage for water toys

Options

- 3.1 Composite hard top bimini on the flybridge with windows and integrated lights
- 3.2 Bimini windshield - transparent canvas only for the front
- 3.3 Bimini windshield - transparent canvas for 3 more sides
- 3.4 Rigid wave breaking window on flybridge
- 3.5 Upgrade to hydraulic gangway
- 3.6 Shower head on the cockpit ceiling with mixing valve
- 3.7 Covers set (navigation station, flybridge tables)
- 3.8 Jetski launching system for garage
- 3.9 6x retractable Stainless Steel Seasmark B400x Cleats instead of standard one

4 - ELECTRICAL SYSTEMS

Standard

AC-230V 50Hz 1ph: main switchboard with panel extension (semi-automatic change over shore-generators), 2 chargers (24V/100A), inverter (220V/50Hz/5000W), 2x shore power inlet 63A, 3x socket (230 V) in cabins, 4 sockets in saloon, 4 in dining area, 4 in galley

DC-24V: main switchboard, house batteries (24V/800Ah), starting batteries, DC distribution, wiring

Generator 19KVA

Additional Inverter 120V/60Hz/3000W + 10 sockets

Options

- 4.1 Upgrade DC-24V: main switchboard, upgrade to 1200Ah from 800Ah
- 4.2 Additional Inverter 230V/50Hz/5000W
- 4.3 Additional Charger Skylla 24V/100A
- 4.4 Additional Charger for engine starting batteries, one on each side

- 4.5 2x alternator 24V/110A
- 4.6 50/60Hz shore connection kit ASEA frequency converter
- 4.7 Additional Generator 19KVA
- 4.8 Additional Generator 27KVA
- 4.9 Generator upgrade from 19KVA to 27KVA
- 4.10 Upgrade to 2 parallel working gensets 2x 20,5KVA 50Hz 230V
- 4.11 Upgrade to 2 parallel working gensets 2x 28KVA 50Hz 230V

5 - LIGHTS

Standard

Lights with LED lamps

Domotic system for lights, controls, and D/C system, including dimmers for ceiling lights (Domotic system function):

Control:

- Lighting with dimming
- Navigation lights
- Control of valves and pumps of black water

Measurement:

- Tank level monitoring with alarm: fresh water, black water, fuel
- Battery and Victron charger monitoring with alarm: starter/ main batteries bank/ emergency batteries (if installed)
- Measurement of temperature in the engine room

Lights in the engine rooms

Exterior lighting package, upgrade from standard (underlighting of fixed furniture on flybridge and cockpit - LED stripe in white; cockpit ceiling two LED stripes surrounding in white; LED white stripes instead of spot lights on skirts)

Options

- 5.1 Underwater lights LED, one color to be chosen along with localization: white or blue (price per unit)
- 5.2 Underwater lights LED RGBW, localization to be chosen (price per unit)

6 - NAVIGATION & ELECTRONICS

Standard

Compass (size 135mm)

Chronometer and barometer

Navigation pack Raymarine: 2x Axiom PRO 9', Radar RD418HD 18" 4kW 456mm digital radome radar, evolution autopilot, AIS700, depth, speed & temp sensor, wind sensor, GPS, Ray90 VHF with dual station, searchlight + control unit, fog horn

Options

- 6.2 Upgrade RAYMARINE: 2x Axiom XL 16', Radar RD424HD 24" 4kW 608mm digital radome radar, evolution autopilot, AIS700, depth, speed & temp sensor, , wind sensor, GPS, Ray90 VHF with dual station, searchlight + control unit, fog horn
- 6.3 Wireless autopilot controller
- 6.4 Satellite Communication System Fleet One Cobham Sailor (including 3 years unlimited satellite data (speed 150 Kb/s) when out of GSM range and GSM data 3 and 4G (5GB/month high speed then unlimited 80Kb/s) in 145 country including caribbean and 1000 Min voice via satellite
- 6.5 Upgrade of option 6.4 with 1TB Data Pack GSM 3 and 4G High speed (To be used within 24 Months)
- 6.6 Satellite Communication System Inmarsat Fleet Xpress (Antenna Cobham Sailor 60GX and Cobham Sailor Fleetbroadband 250) This pack allows to have unlimited monthly data subscription worldwide by satellite with possibility of streaming on a very low cost
- 6.7 4G/LTE Wifi antenna worldwide
- 6.8 Satellite TV antenna KVH TV6
- 6.9 External cameras with color and night vision- 2 pcs

7- PLUMBING

Standard

Fresh water: 2x 800L with level indicators, pressurized pump, 2 water heaters of 100L each
Black water: 1x 500L tank with pump discharge system, electric pump
4 electrical bilge pumps
2 manual bilge pump
Hand shower on deck
1 pressurized fresh water outlet on cockpit (female quick-coupling snap connector)
Electric toilets 24V in bathrooms with fresh water flush

Options

- 7.1 Watermaker 95l/h - 24V
- 7.2 Watermaker 280l/h – 230V
- 7.3 1 grey water tank 800L with electric pumps of additional extraction and piping installation (max two grey water tanks possible)
- 7.4 Upgrade black water tanks to 2x 500L
- 7.5 Fresh water inlet (connection between the boat's water network and the shore water supply)
- 7.6 Fresh water outlet for washing the deck

- 7.7 Retractable hose (5mb) with shower head in chain locker for chain wash
- 7.8 Additional Bilge pump in both forepeaks

8 - COMFORT ON BOARD

Standard

- Electric blinds (plisse) in saloon
- Manual roman blinds in cabins
- Curtains and backdrop for entrance door
- Air conditioning installation in the saloon, galley and cabins: 70 000 BTU/h

- Galley appliances package (Bosch or/and Siemens): refrigerator with freezer, dishwasher, electric oven, electric stove cooker hood

- Washer&dryer (one item) (Bosch or Siemens)
- Sunpad area on aft flybridge
- Stainless steel sliding entrance door
- Pantograph electric door to front deck

Options

8.1 Generalities

- 8.1.1 Electrically recessed blinds (plisse) in cabins

8.2 Electrical appliance

- 8.2.2 Upgrade Air Conditioning to 170 000 BTU/h
- 8.2.3 Galley appliances upgrade to Miele
- 8.2.4 Washing machine and dryer as separate units Miele, upgrade from standard
- 8.2.5 Wine cooler in the saloon

8.3 Leisure items

- 8.3.1 Widescreen LED TV 43" with installation (saloon)
- 8.3.2 Widescreen LED TV 55" with installation (saloon)
- 8.3.3 Lifting system up/down (if possible depend on layout)
- 8.3.4 Lifting system for TV under ceiling with swivel (TV up to 55")
- 8.3.5 Hi-Fi Pack 1: for saloon or/and outdoor
 - 8.3.5.1 Yamaha Home Cinema Receiver 7.2 + 5x ceiling speakers + 1x active subwoofer
 - 8.3.5.2 2 waterproof speakers in the cockpit and 4 in the flybridge
 - 8.3.5.3 4 waterproof speakers on front deck
- 8.3.6 Hi-Fi Pack 2: (price per cabin)
 - 8.3.6.1 Yamaha Power Network Receiver +2x premium speakers
- 8.3.7 LED TV 32" (price per cabin/unit)
- 8.3.8 Terrestrial TV antenna
- 8.3.9 Safe (price per unit)

- 8.3.10 Electric diving compressor 100L/min 90-330bar
- 8.3.11 Diving bottles holder
- 8.3.12 Multifunctional full-size rest-lounge with foldable backrest
- 8.3.13 Front deck cushions
- 8.3.14 Jacuzzi on the flybridge
- 8.3.15 Waterfall for jacuzzi (requires biminib 3.1, option 3.2 and option 8.3.14)
- 8.3.16 Bar module in cockpit
 - 8.3.16.1 Sink with retractable faucet for the bar module
 - 8.3.16.2 Ice maker for the bar module
 - 8.3.16.3 Low fridge for the bar module
- 8.3.17 Bar module on flybridge
 - 8.3.17.1 Sink with retractable faucet for the bar module
 - 8.3.17.2 Ice maker for the bar module
 - 8.3.17.3 Low fridge for the bar module
 - 8.3.17.4 Electric Stainless Steel BBQ

9 - FINISHING

Standard

Design fee (1 day with interior design + 3 renders - saloon, owner's cabin and owner's head
 Interior wall and ceiling panels, sofas, headboards and beds in skai (artificial leather) or easy-clean fabrics*
 Wooden furniture panels category A with mat polyurethan lacquer*
 Vinyl floor in saloon and cabins
 Decorative rug/carpet in saloon
 Hull and deck in white gelcoat
 *according to individual design

Options

- 9.1 Wood finished with mat polyester lacquer
- 9.2 Wood finished with gloss polyester lacquer
- 9.3 Upgrade wood from category A to category B
- 9.4 Upgrade wood from category A to category C
- 9.5 Interior upholstered wall and ceiling panels in easy-clean fabrics instead of skai
- 9.6 Interior sofas and cushions in natural leather instead of skai
- 9.7 Wooden floor (plywood + natural veneer) in saloon
- 9.8 Wooden floor (plywood + natural veneer) in cabins
- 9.9 Glued carpets in cabins
- 9.10 Cockpit and skirts covered with teak
- 9.11 Deck covered with teak
- 9.12 Flybridge covered with teak
- 9.13 Hydraulic platform covered with teak
- 9.14 Side of hulls painted in colored gelcoat (light colors)
- 9.15 Side of hulls with high gloss lacquer (color to be decided by customer)
- 9.16 Side of hulls with metalized lacquer (color to be decided by customer)

- 9.17 Fitted forepeak (need option 7.8):
 - 9.17.1 Standard: bed with composite painted wall
 - 9.17.2 Comfort: bed and bathroom with composite painted wall
 - 9.17.3 De luxe: bed and bathroom with premium finish
- 9.18 Air condition for forepeak (need air condition installation)

10 - SAFETY EQUIPMENT

Standard

Manual fire extinguishing system in the engine rooms

Options

- 10.1 Complete rescue equipment with life-rafts for 12 persons
- 10.2 Adaptation to commercial requirements, MCA cat 0 (Red Ensign)
- 10.3 Adaptation to commercial requirements, Malta Commercial Code 2015 – Sea area 2 (Maltese flags)
- 10.4 Automatic fire extinguishing system in the engine rooms (included in commercial adaptation)
- 10.5 Gas detection system + alarm (included in MCA)
- 10.6 EPIRB (included in option MCA)
- 10.7 Satellite tracking system (excluding fees)

11 - MOORINGS & TOOLS

Standard

Windlass 3000W 24V
Anchor CQR 81kg + 80m galvanized chain (diameter 14mm)
Additional anchor 20kg + 20m galvanized chain (diameter 10mm)

Options

- 11.1 50m tow line
- 11.2 Windlass upgrade to 3500W, anchor CQR 90kg + 100m galvanized chain (diameter 14mm)
- 11.4 Mooring set (8x fender, 4x mooring rope)

12 - STEERING SYSTEM

Bronze rudders
Steering wheel
Hydraulic steering system
2 emergency tillers

13 - LAUNCHING

Launching, name and hailing port inscriptions, Polish export fees

- 13.1 Antifouling (with Epoxy primer)

13.2 Sunreef representative on board for 3 days, till Kiel Channel (incl. crew return travel cost)*

OPTIONS:

hull number 2021 - cost 3% of the value of the boat

day head on the cockpit

Fuel Curve and Speed/Range

Hull #8 is available with upgraded propulsion package (MAN V8-1200hp engines).

This gives her the flexibility of a high top speed of 24 knots and to me the more important feature being her low fuel consumption and impressive range at economical speeds.

Listed below is a detailed charter showing her speed, fuel burn and ranges at all levels of engine performance.

% rpm	Speed (kn)	Engine Power (kW)	Engine (rpm)	Fuel Burn (L/h)	Range (Nm)	Yacht Autonomy (L/nm)
100%	21.5	882	2300	230	639	21.4
96%	20.5	882	2200	200	701	19.5
91%	19.5	882	2100	180	741	18.5
87%	19.0	845	2000	158	823	16.6
83%	18.5	805	1900	135	937	14.6
78%	18.2	755	1800	120	1037	13.2
74%	17.7	710	1700	105	1153	11.9
70%	17.4	675	1600	86	1384	9.9
65%	17.0	625	1500	73	1593	8.6
61%	16.6	585	1400	60	1892	7.2
57%	16.1	540	1300	50	2202	6.2
52%	15.7	504	1200	43	2497	5.5
48%	14.4	435	1100	35	2814	4.9
43%	13.3	285	1000	32	2843	4.8









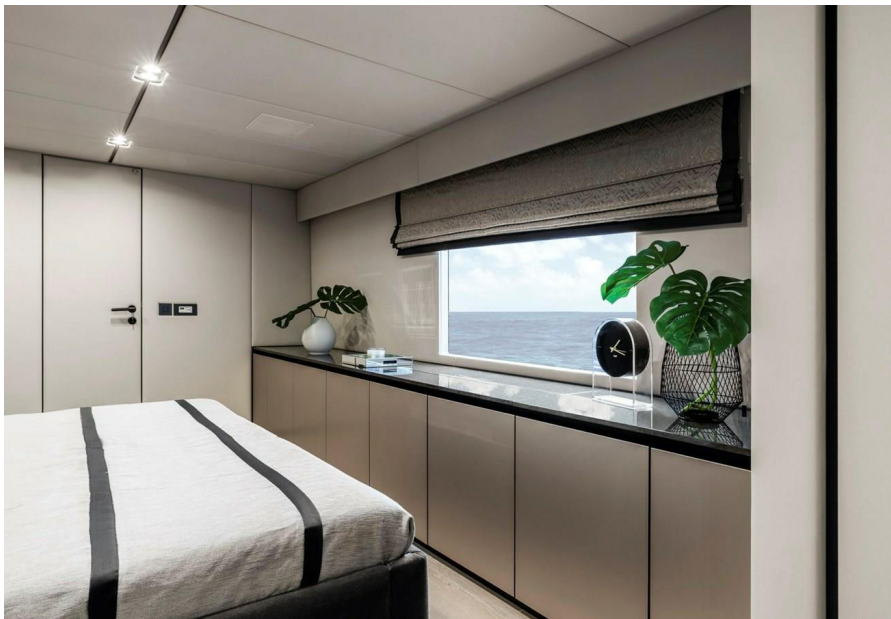






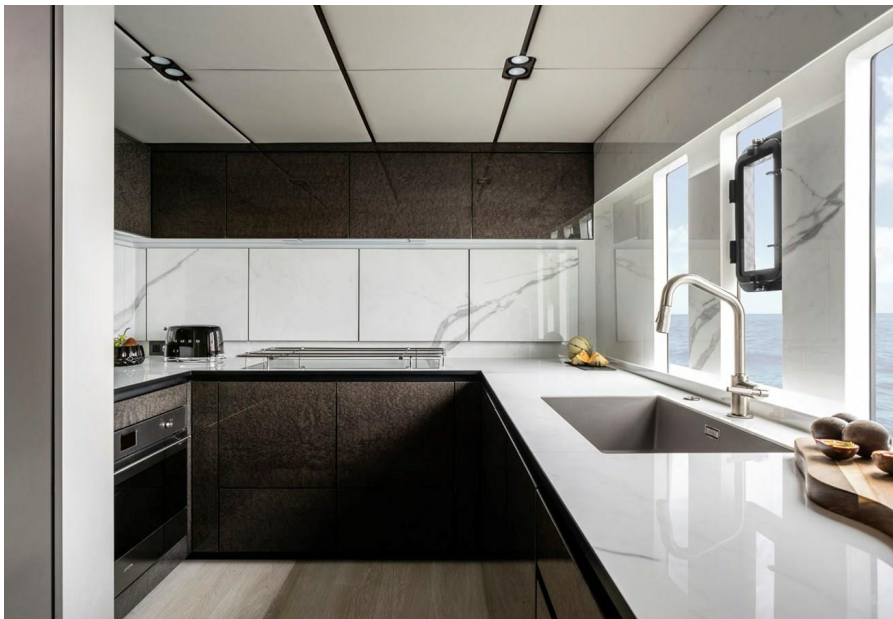




























Screen Shot 2020-06-03 at 11.04.04 AM

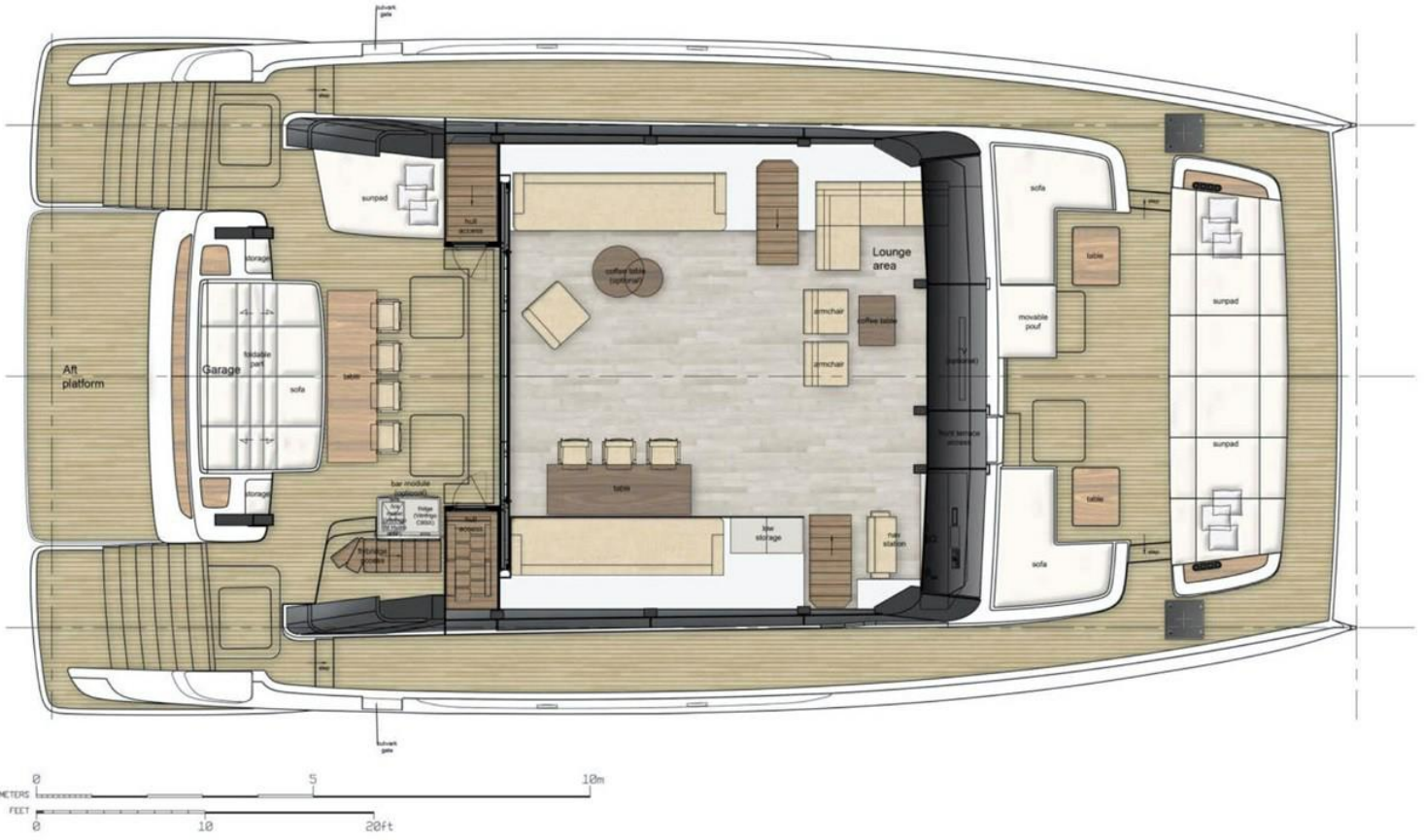
80power
by sunreef yachts



THIS ARRANGEMENT PLAN DOES NOT DETERMINE THE FINAL PRODUCT AND SERVES ONLY FOR VIEWING PURPOSES. IT MAY CONTAIN EQUIPMENT AND ACCESSORIES WHICH ARE NOT DELIVERED IF NOT EXPLICITLY ORDERED BY THE BUYER. IN CASE OF DISCREPANCY BETWEEN THE ARRANGEMENT PLAN AND THE SPECIFICATION THE SPECIFICATION SHALL PREVAIL.

80power

by sunreef yachts



THIS ARRANGEMENT PLAN DOES NOT DETERMINE THE FINAL PRODUCT AND SERVES ONLY FOR VIEWING PURPOSES. IT MAY CONTAIN EQUIPMENT AND ACCESSORIES WHICH ARE NOT DELIVERED IF NOT EXPLICITLY ORDERED BY THE BUYER. IN CASE OF DISCREPANCY BETWEEN THE ARRANGEMENT PLAN AND THE SPECIFICATION THE SPECIFICATION SHALL PREVAIL.

80power

by sunreef yachts



THIS ARRANGEMENT PLAN DOES NOT DETERMINE THE FINAL PRODUCT AND SERVES ONLY FOR VIEWING PURPOSES.
IT MAY CONTAIN EQUIPMENT AND ACCESSORIES WHICH ARE NOT DELIVERED IF NOT EXPLICITLY ORDERED BY THE BUYER. IN CASE OF DISCREPANCY BETWEEN THE ARRANGEMENT PLAN AND THE SPECIFICATION THE SPECIFICATION SHALL PREVAIL.