

## Luxury Cruising Catamaran

# CARTOUCHE 95'



Unique, Refined, Luxurious and easy to handle ... The best compromise between MotorYacht and SailingYacht, optimizing comfort, stability and performance !

### General specifications :

LOA	95' 0" (28.96m)
Beam	40' 0" (12.19m)
Min Draft	2' 0" (0.61m) min
Max Draft	7' 5" (2,30m) max
Displacement	80 tons approx
Speed	12 knots max



Year	Mfg-2010 Model-2010, registered in 2011
Builder	BLUE COAST YACHTS
Designer	COSTE DESIGN
Type	Catamaran Cruising Sailboat
Location	Florida, United States (Palm Beach)
Flag	french

### Construction

*The Blue Coast 95' yacht CARTOUCHE is built of high tech composite, well known for their light weight, strength and extreme durability.*

*The construction process combines the infusion of epoxy resin / Glass fiber/Carbon fiber and PU foam core. The vessel is then subdivided into smaller individual modules, including two full beam carbon fiber composite bulkheads bonded into a single symmetrical arrangement. All structural elements (bulkheads, frames, roof and decks) are carefully integrated with the interior.*



*All exterior finishes have been done with Awlgrip top class painting.*

### Concept and Design :

*The sailing yacht Cartouche, the Blue Coast 95' catamaran, was designed by the renowned naval architectural office of **COSTE DESIGN & PARTNERS***

*Only few shipyards are capable of handling the technology and processes necessary for the construction of a composite maxi catamaran : **H2X SHIPYARDS**, in South of France, is one of the leading experts in this single infusion technology.*

*All structural elements made using the "one shot" vacuum bagging system. It is a delicate procedure that requires experience, precision and know-how.*

*During construction, the weight was continuously monitored and compared with studied estimates. Each separate structural component has been approved by laboratory testing.*

*The yacht has been built in a weather protected and temperature controlled construction hall, as per **BUREAU VERITAS** specifications.*



Jean-Jacques COSTE :

« I love to achieve a goal where elegance, style, technology and performance are satisfying my customers : I am proud today that this beautiful yacht CARTOUCHE may have fulfilled their expectations ... »

*and heralds a new generation of high tech opulent sailing yachts.*

*She is undoubtedly one of the most elegant luxury catamarans ever built, while offering premium performance and superior comfort combining modern styling with refined aerodynamic lines.*

*The well-known catamaran's stability is such that rolling and heeling are reduced to the minimum at anchoring and while sailing in rough conditions, thanks to her long narrow hulls. The hulls' shallow draft enables anchoring and cruising close to shore, an option not possible on many monohull sailing yachts.*

#### **Rigging and Sails :**

*The Blue Coast 95' is built to be manned by a minimum crew. All the sails and mooring commands are operated from the helm station at the fly bridge, even the styled hydraulic furling boom, fitted with an automatic bagging system to protect the sails. This allows a very safe and easy sail reduction and open new perspectives in the maneuvering of giant sailing catamarans .*

Mast	33m (110') rotating carbon fiber wing from Petitjean Composites (3D technology)
Boom	Carbon hydraulic furling boom (3D technology)
Standing rigging	Kevlar, light weight, low drag and high efficiency
Rigging	deck sloop
Sails fabric	3DL by North Sails
Main sail	235m <sup>2</sup> full battened fat head
Solent	115m <sup>2</sup> self tacking with hydraulic furler
Storm Jib	24m <sup>2</sup>
Gennaker	280m <sup>2</sup> optimizing power in light wind conditions
Spinnaker	500 m <sup>2</sup>
Winches	1 x Harken 1000 STH for mainsail 1 x Harken 1000 STH for solent and storm jib 2 x Harken 1110 STH for gennaker and spinnaker in « carbon » 1 x Harken 1000 STH for spinaker and gennaker halyards
Mainsail track	Tenderlift Magic Trim

**Exterior Layout :**

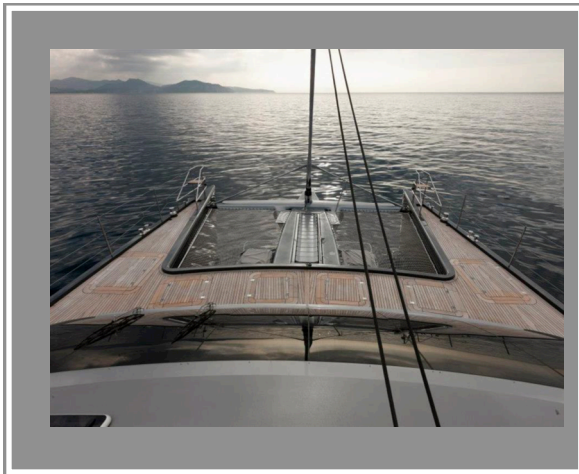
*Sailing yacht CARTOUCHE, the Blue Coast 95's exterior lines are the result of hydro & aerodynamic research, speed performance, comfort, ergonomics and the owner's particular aesthetic wishes ... The entire deck is recovered with teak, all hatches are flush, the solid stainless steel rigging secure the easy passage all around the deck...*

**■ Forward deck :**



*The spacious fore deck invites to enjoy time seated on the two forward pulpits seats or simply to lounge on the large nets, while admiring the complete sails out ... The anchoring and running rigging equipment has been incorporated seamlessly into the deck's layout, for an easy secure passage everywhere. A central foldable ladder will also invite you to go to swim from the front ...*

- 2 anchors of 120 kg CQR with chain Studlink diam 16 mm with 110m of chain each
- 2 windlasses Lewmar V8 hydraulic
- 2 capstans C5 Lewmar for docking lines
- Central longitudinal plateform for mooring and access to front beam with incorporated ladder
- Front transversal beam in carbon
- 2 forward pulpits with teak seats
- 2 large trampolines nets
- Several storage lockers
- Full teak cover on fore deck
- Flush hatches high class from Solimar



#### ■ Aft salon and access to transoms :

*The exterior aft salon offers shaded lounging with unobstructed panoramic views and is separated from the large interior salon by a wide sliding door. The aft stairs pertaining to each hull lead to Lazarette compartments and down to the transom where one can store personal watercrafts, scuba diving equipment and other water sport toys.*

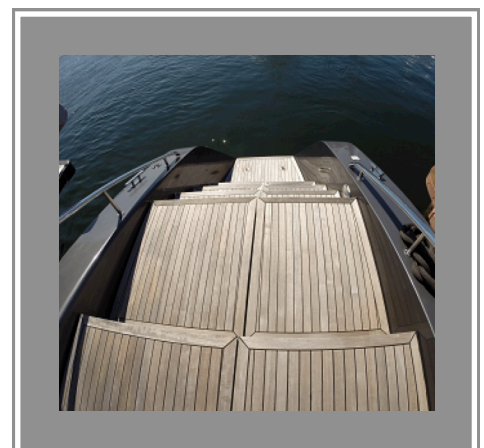
- Lounge area with salon equipped by Royal Botania
- Dining area with a long table for 10 with extensions and chairs
- Large storage lockers in cockpit floor
- 2 large sunmats displayed on each side of the cockpit
- Bar arrangement with fridge, sink, ...



### ■ Hydraulic aft plateform and transoms :

*CARTOUCHE is also equipped with a hydraulic swim platform that drops 60cm below water level to facilitate the launching of the main tender. This platform can also be used as a sunbathing deck and is the perfect support to water sports. On each hull a swim ladder grants direct access to the water.*

- Hydraulic platform in aluminium with teak
- 2 long transoms with swim ladder incorporated
- Fresh water shower hot/cold on each transom
- Access to both technical rooms
- Hydraulic boarding gangway 3,50m long

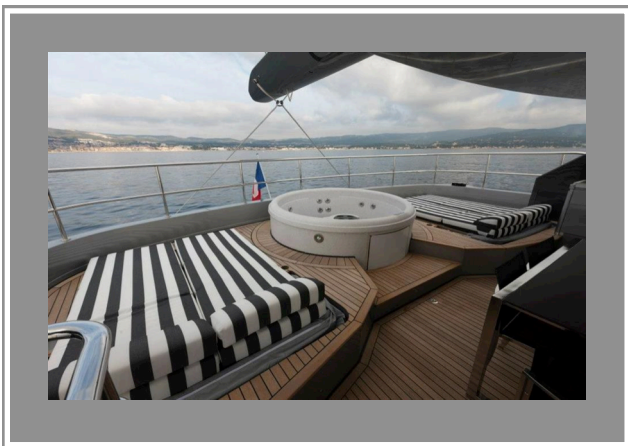


### ■ Flying bridge and helmstation :

*From the aft one reaches the fly bridge via a comfortable stairway to starboard. The helm station is amidships and the rigging equipment is located to port and starboard for ultimate control and ease of handling.*

*A second, vast sunbathing area is located on either side of a Spa Pool and amidships there is a dining area where guests can enjoy remarkable views with sofa and bar. A dumbwaiter has been installed to bring food directly up from the galley.*

- Double comfortable bench at helmstation
- Dining area with table and chairs
- Carbon steering
- Large protection windshield
- Engines and bow thruster controls
- Electronics screens
- All controls for winches and sails
- SPA pool at the rear of the flying bridge
- Comfortable and adjustable sunmats all around
- Teak cover at the complete flying bridge
- Large hardtop with view on rigging
- Bar with sink, fridge, plancha, grill and lift



### Engines, Plumbing, Hydraulic and Electricity :

*Technical rooms are located at the back side of each hull with a large opening hatch accessible by the deck ; organization is optimized, and space allows an easy access for all maintenance requirements for the crew. All pumps, systems and fire extinguishing process are certified and approved by BUREAU VERITAS.*

### ■ Engines

Engines	2 x 425 HP Inboard, Diesel, QSB 5.9, Cummins 2 additional 115A alternators (for services)
Speed	Max 12 knots (13L/H per engine at 9 knots)
Propellers	2 x MaxProp 3 blade auto fathering 29'
Bow thrusters	2 Lewmar 250 hydraulic (connected on PTO from generator) of 20hp each

#### ■ **Plumbing and hydraulic**

Fuel Capacity	2,115 gal (8,000 liters)
Range	long range, Transatlantic possible
Water Capacity	792 gal (3,000 liters)
Black waters	2 tanks for a total of 264 gal (1,000 liters)
Grey waters	2 tanks for a total of 264 gal (1,000 liters)
Steering gear	Tenderlift hydraulic
Hydraulic station	24V - 380V - PTO (power-take-off) system
Watermaker	2 x Sea Recovery 280L/H each
Waterboilers	2 x 150L
Pressurized water syst	2 units Headhunter
Toilets	Tecma fresh water Silence plus

#### ■ **Electricals**

Generators	1 x 27,5KW Onan 1 x 13,5KW Onan
Shore connection	1 x 220V/50HZ and 2 x 380V/50HZ (house appliances on 220V in the US)
A/C	Webasto reversible Bluecool Premium 2x72000 BTU 1x4500 for crew - 1x9000 per aft guest cabin - 2x9000 for the stbd fwd cabin - 1x6000 for laundry - 2x16000 for the master - 1x16000 for the steering area - 2x20000 and 1x24000 for the main salon
Chargers	2 x 35A Victron for engines batteries 3 x 100A Victron for services batteries
Inverter	2 x 3KW Victron
House batteries	1200A gel batteries in 24V
Engines batteries	2 x 115A
Backup batteries	140A / 24V

#### **Entertainment and Electronics :**

*CARTOUCHE is equipped with the best equipment and allows a lot of enjoyment on board.*

- Large flat screen TV Samsung 55' in main salon with DVD player
- Bose system Lifestyle 5.1 with speakers in salon and cockpit
- Sound system at the flying bridge
- TV antenna KVH M9
- TV Samsung 32' + DVD player Bose 123 GSX in Master cabin
- TV Samsung 32' + DVD player + Bose station in each cabin

*Navigation equipment is complete and optimized thank's to the choice done on Brookes & Gatehouse.*



### ■ At helmstation inside :

- Navigation station B&G H3000 Hercules
- Autopilot B&G H3000 with control GPD
- Remote control wireless for autopilot with receiver
- Compass Halcyon 3D gyro
- Computer with MaxSea software and Timezero explorer and AIS Maxsea module
- AIS transmitter / receiver
- Radar 2 screens 17" LCD
- Satellite compass SC30 with interface NMEA
- Navtex with antenna active
- VHF Icom 603 ASN
- GPS Furuno GP32
- Beacon Sarsat
- Inmarsat Fleet Broadband 250 Sailor
- Inmarsat Mini C with security alert system
- Horn

### ■ At flying bridge :

- Navigation station B&G H3000 Hercules
- Autopilot B&G H3000 with control GPD
- Module black box NavNet 3D Furuno with keyboard
- Repeater screen for computer
- Radar 2 screens 17" TFT with antenna 4 kw
- Camera FLIR thermic
- VHF
- Transponder Sart

### ■ In crew quarters and Master cabin :

- Repeater multifunction B&G H3000 Hercules

### General arrangement :

*The Blue Coast 95's interior accommodations and decor meet the latest standards in comfort and luxury using lightweight materials and state of the art craftsmanship. The choice of the owners was to create a unique living space where the modern galley is designed for being part of the spirit of the yacht ...*

*The master cabin is located on the main deck, with an incredible view on the front while other guests cabins are displayed in both hulls.*

*Each space has his own identity, black and white are signing this very elegant and pure interior ... Carpentry is treated with refined grey oak, as well as floors on a light sandwich structure ; the highest names are signing the benches and bar stools (Roche Bobois and Bonaldo), comfortable chairs (Bo Concept), but also the bathrooms (Fratelli Fratini and Jandelle), the different lights (Diesel, Kartell and Foscarini) ... Swarovski and Antilo are giving a precious touch to the bedrooms, each area inspires to serenity and refinement ....*



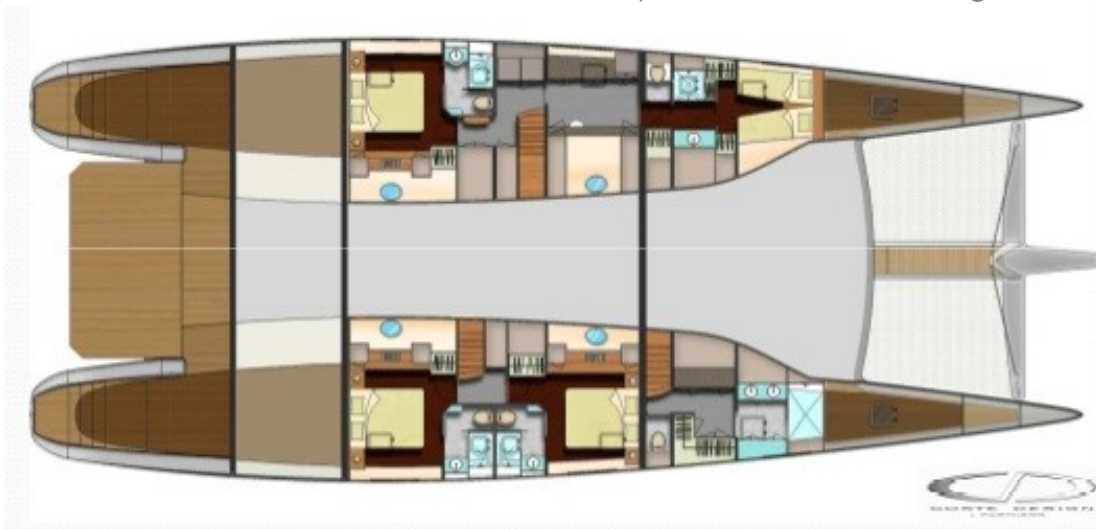
**Upper Deck (Fly bridge)**

(Jacuzzi, sunmats, dininig area, kitchenette and bar, helmstation)



**Main Deck**

(Master cabin, Helmstation, Salon area, Galley with bar, Exterior dining and salon)

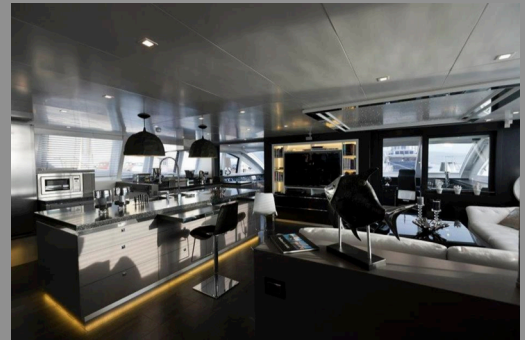
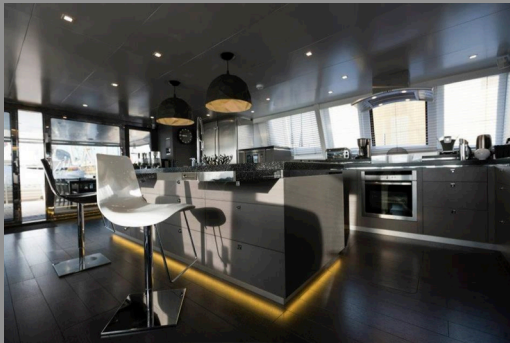


**Lower Deck (in hulls)**

(3 Guests cabins with bathroom, Master bathroom, Crew quarters, Laundry)

## ■ MAIN DECK

- Master bedroom on the front starboard with sea view
- Low cabinetry all around under the panoramic windows
- Spacious desk area with sea view and comfortable chair
- Ensuite bathroom with large shower accessible by starboard stairs
- Salon area with comfortable benches and library
- Large carpet and design furnitures
- Navigation station at the front port with panoramic view
- Large central fully equipped galley with :
  - garbage compactor,
  - hood and induction cooker Neff st/steel
  - oven Neff
  - dish washer Siemens
  - microwave oven Neff
- Lift in galley to the flying bridge
- Long bar furniture with bar tools and suspended lamps
- Numerous storage and cupboards
- All windows in high tech glass from Tecnoglass







Master Cabin and Master Bathroom

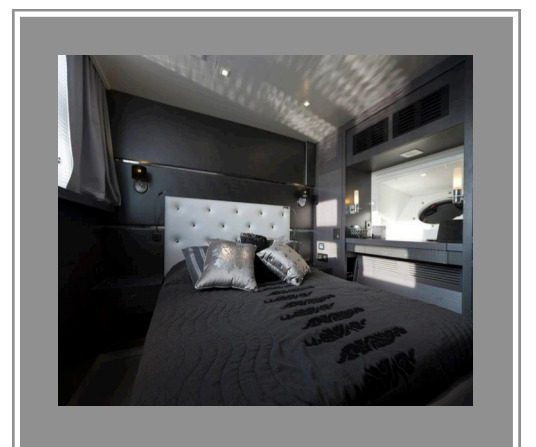
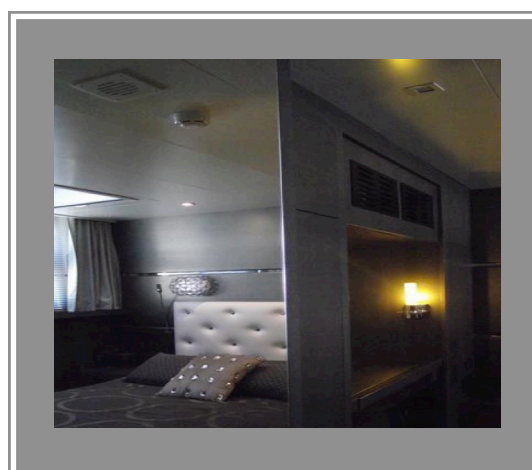
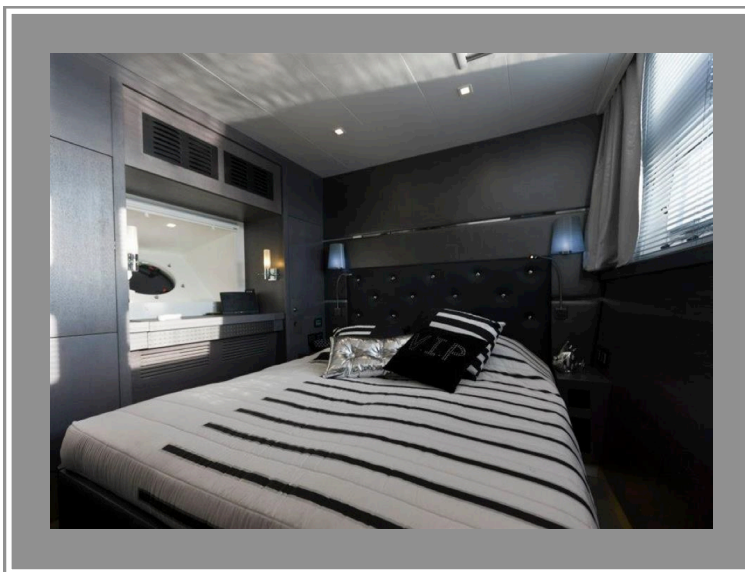
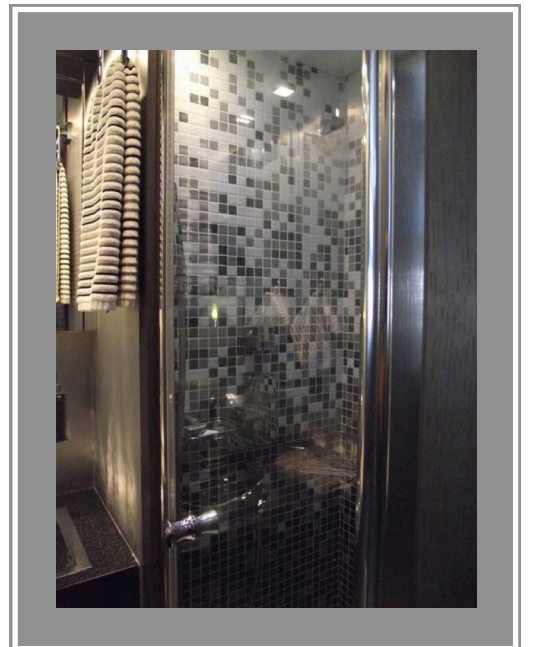
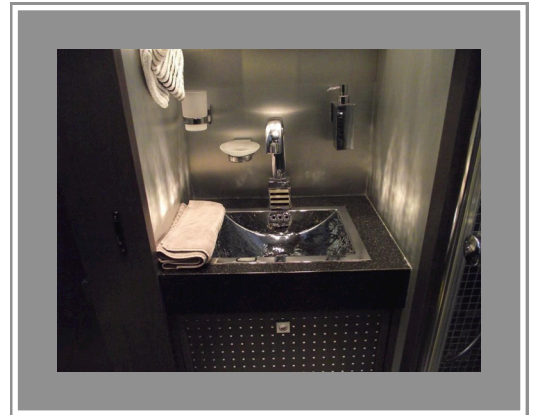


**■ STARBOARD HULL**

- 2 Guest cabins with desk area and spacious storage
- Ensuite bathroom with mosaic and large shower
- Wine cooler s/s Liebherr and large freezer s/s Liebherr
- Lazarette with watercraft storage
- Fore peak for storage with access from the deck
- Engine room at the rear with access from the deck

**■ PORT HULL**

- 1 Guest cabin with desk area and spacious storage
- Ensuite bathroom with mosaic and large shower
- 1 Crew quarter for 4 in the front bow hull with headroom
- Laundry area with washer and dryer 8KG Siemens
- Crew kitchenette with sink, fridge, cooker and table
- Lazarette for diving storage and telescopic gangway
- Fore peak for storage with access from the deck
- Engine room at the rear with access from the deck



**Water toys :**

- Tender Ribeye lightweight of A500 (5 m) with 80hp engine Yamaha
- Diving compressor Bauer
- Hookah with diving apparatus
- Jetski VX Cruiser Waverunner Yamaha 1052cc

**NOTE**

CARTOUCHE IS NOT FOR SALE TO US RESIDENTS WHILE IN US WATERS

**The word of the Owners :**

« We spent a lot of time around the world with CARTOUCHE, and we have enjoyed every moment spent on board ... Easy to handle, our captain is alone , we give him a hand (even on a 95') and the deck is so secure and wide. In term of comfort, each guest finds privacy and nothing is missing ... The flybridge is a real living space where we love having cocktails during sunsets or having a bath in the spa. Another point : the tenderlift ! Magic for enjoying the tender in a few seconds ... Life is inviting us to some other projects, we will not be able to enjoy CARTOUCHE as we would like, so decision has been taken to find her a new owner . »

**General condition :**

Maintenance by captain yearly employed

Last antifouling January 2014

Hours on engines approx 2000 h

Hours on generators approx 5000 h

Hours on watermakers approx 950 h

To be done . Bottom job  
. Some paint jobs  
. AIS and radar to replace

**Disclaimer**

*All speeds, capacities, consumption, etc. are approximate or estimated; measurements can also be approximate. Specifications are provided for information only, and particulars herein obtained from sources believed to be correct, but are not guaranteed. Buyer should instruct his agent and/or surveyor to check all details for accuracy. Offered subject to prior sale, price and/or inventory change, or withdrawal from the market without notification.*