



# EXODUS

40.05M • SUNSEEKER • 2019  
FOR SALE





# OVERVIEW

- Under shipyard warranty
- Extended MTU EPC 3 year warranty
- Built under supervision of owner's independent technical team / surveyor
- Highly specified and customized high-quality interior (Dornbracht, Yacht Intelligence A/V etc.)
- Built to MCA LY3 Unrestricted navigation & Commercially operated
- Extra sound insulation all around Master Cabin to reduce noise from all angles
- Shore power converter for worldwide operation
- Trailing pumps fitted for slow speed cruising allowing for very low fuel consumption
- Thermal tracking camera for chase boat operation
- GBP 2,985,000 of extra options not including extra A/V and custom interior additions
- Preventative maintenance ongoing with full time crew aboard

Launched in March 2019 EXODUS and most highly specified Sunseeker 131 on the market with an extremely competitive asking price.

# SPECIFICATION



## EXODUS

SUNSEEKER • 40.05M • 2019



BEAM:  
8.09M



DRAFT:  
2.70M



HULL:  
FIBREGLASS



GRT:  
343



CRUISING SPEED:  
20KTS



DESIGNER INT / EXT:  
SUNSEEKER / OWNER



GUESTS:  
12



CABINS:  
5



CREW:  
8





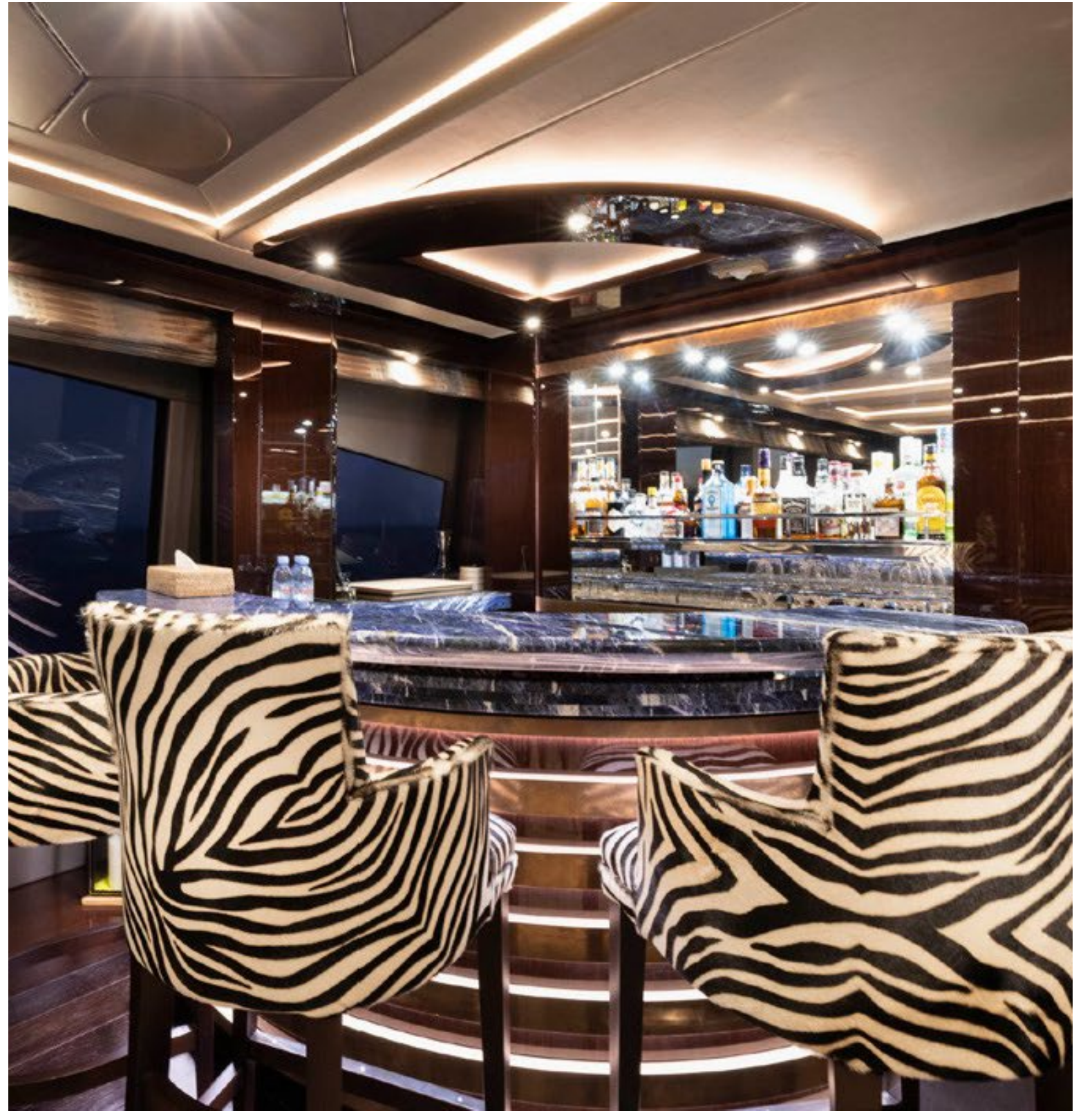


























































# DETAILED SPECIFICATIONS

|                       |  |                  |
|-----------------------|--|------------------|
| TYPE                  | Twin Screw, Displacement hull, Motor Yacht   |                  |
| FLAG                  | Bloody Bay, Cayman Islands [KY]  |                  |
| CLASSIFICATION        | Rina and LY3: C + Hull. Mach Ych (MCA)<br>Unrestricted navigation EFP DMS (Enhanced fire protection and damage stability). |                  |
| DIMENSIONS            | Length O.A.  | 40.05 m (131'5") |
|                       | Length Registered  | 32.82 m (107.6") |
|                       | Beam   | 8.09 m (26'7")   |
|                       | Draft  | 2.70 m (8'10")   |
|                       | Height (W.L to arch)   | 9.20 m (30'2")   |
| VOLUMES               | GRT  | 343              |
|                       | NET TON  | 102              |
|                       | DISPLACEMENT   | 189,600 kg       |
| YEAR BUILT            | March 2019   |                  |
| BUILDER               | Sunseeker International, Poole, Uk   |                  |
| HULL DESIGNER         | Sunseeker International, Poole, Uk   |                  |
| INTERIOR DESIGNER     | Sunseeker International, Poole, Uk / Owner   |                  |
| CONSTRUCTION          | Hull: Glass Reinforced Plastic<br>Superstructure: Glass Reinforced Plastic<br>Deck: Teak laid on Glass Reinforced Plastic  |                  |
| <b>MAIN MACHINERY</b> |  |                  |
| MAIN ENGINES          | 2 x 3,460 hp 12 cylinder 12V4000M93L Diesel<br>Under MTU EPC extended Warranty 3 years<br>or 3,000 hrs                     |                  |
| Engine hours          | 14/12/2020   |                  |
|                       | Port: 907 hrs  |                  |
|                       | Starboard: 907 hrs   |                  |

## MAIN MACHINERY (Cont)

|                     |   |
|---------------------|---|
| GEARBOX             | 2 x ZF 7600 A, ratio 3,286:1  |
| SHAFTS & PROPELLERS | 2 x Duplex F51 high grade stainless steel<br>2 x 5-balde NAB bronze propellers  |
| SPEED & CONSUMPTION | Max 21 knots @ 2,100 rpm<br>Cruising 12 knots @ 1,250 rpm = 300 lt/hr<br>Cruising range 12 knots for approx. 1,116 nm<br>Fuel curve available on request. |

## AUXILIARY MACHINERY/ EQUIPMENT & ELECTRICAL SYSTEM

|                  |  |
|------------------|--|
| GENERATORS       | 2 x Kohler 80Kw 400/230V 3 Phase 50HZ –<br>with sound shields upgraded   |
| SHORE POWER      | 1 x 125A<br>1 x 125A connected to Atlas 90 kVA-SPA-II<br>Series 50Hz. Input 180-530V single or three<br>phase up to 90kVA  |
| THRUSTER         | Bow Thruster: ABT TRAC 100HP (513mm)<br>Stern Thruster: ABT TRAC 65HP (412mm)  |
| STABILISATION    | ABT TRAC 440 digital fin stabilizers   |
| SEWAGE TREATMENT | ECOMar 32 (3,200 l/day) 230V 1 Phase 50Hz 1  |
| WATER MAKERS     | 1 x Idromar 375 litres per hour (upgrade)<br>1 x Idromar 375 litres per hour (additional)  |
| FUEL SEPARATOR   | Alfa Laval MIB303 fuel cleaning centrifugal separator<br>240V 1 Phase 50 Hz 760 L/hr   |
| WC'S             | Tecma Silence Plus 220 Volt AC macerating toilets  |
| AIR CONDITIONING | Marine Air chilled water system to Tropical specification<br>with quieter WhisperCool DC fans<br>2x Marine Ai VCD27K 54,000 BTU self-contained units in<br>the engine room |

## CAPACITIES (approximate)

|             |  |
|-------------|--|
| FUEL        | 19,000 litres / 45,019 US gallons main tank<br>3,900 litres / 1,030 US gallons day tank<br>5,700 litres / 1,505 US gallons additional tank upgrade |
| TOTAL FUEL  | 28,600 litres / 7,555 US gallons   |
| WATER       | 4,950 litres / 1,307 US gallons  |
| GREY WATER  | 1,350 litres / 356 US gallons  |
| BLACK WATER | 1,450 litres / 383 US gallons  |

## NAVIGATION & COMMUNICATION EQUIPMENT (LY3 compliant)

|                     |   |
|---------------------|---|
| VHF                 | Sailor 6222<br>Sailor 6204<br>Simrad RS90 Class D VHF/DSc with Handsets in Wheelhouse,<br>Crew mess and Emergency Steering Position                           |
| CHART               | Transas Navi-Sailor 4000 ECDIS<br>Upgrade Transas AIS, ARPA and radar integration   |
| RADAR               | Furuno FAR2837S-BB S-Band 3GHz with 10' Open Scanner with<br>Furuno processor RPU   |
| MEASURING LOG       | Sperry Naviknot 350E with FNFI through hull sensor  |
| ECHO SOUNDER<br>GPS | Furuno FE800 Echo sounder 200 khz with 200B-8B transducer<br>Furuno GPI 70 GPS Navigator with GPS antenna   |
| AIS                 | Furuno FA170 Class A transponder with GPS and VHF antenna   |
| WATCH ALARM         | Furuno BR500  |
| RUDDER INDICATOR    | Simrad RF45X  |
| GYRO COMPASS        | Satellite Hemishpere GNSS V103  |
| AUTOPILOT           | Simrad AP70   |
| RADIO               | MF: Sailor 6310 MF/HF 150W Radio telephone  |
| INMERSAT            | C. Sailor 6110  |
| NAVTEX              | Furuno NX700B   |
| EPIRB               | McMurdo E5  |
| SART                | McMurdo S4  |
| THERMAL CAMERA      | Flir M400XR Stabilized Thermal and Daylight Camera with<br>tracking facility. Installed on navigation mast to allow monitoring<br>and tracking of chase boat. |



# DETAILED SPECIFICATIONS

## AUDIO / VISUAL ENTERTAINMENT SYSTEMS

Please request the full list of ultra high-end equipment fitted throughout

CONTROL SYSTEM Crestron automation throughout

## DOMESTIC EQUIPMENT

MAIN GALLEY 4 x Frigoboat 1,440 lt each  
2 x Frigoboat 646 litres freezer capacity each  
2 x Miele H6460BP single convection ovens  
Miele KM6879 Induction hob 5 zone – 900mm  
Extraction fan – Systemair KE 50-25-4230V 1 Phase  
50Hz with Actionair AirShield.  
Icemaker 22kg / day  
Miele ESW229X 29cm plate warming drawer  
Slimline 190 litre trash compactor  
132 bottle Wine Cooler

STERN LAUNDRY Miele 2 x washing machine, 2 x tumble dryer and dishwasher

## TENDERS & WATERSPORTS EQUIPMENT

TENDERS 1 x Williams 565 Diesel Jet tender (serviced 12/2020)

WAVERUNNERS 2x Sea-Doo RXP-X 300 with Venom Custom Tuning  
Package - Wave Runner Trackers fitted linked to the vessels bridge navigation systems (serviced 12/2020)

TOYS 2 x Sea Bob F5 SR

## DECK EQUIPMENT

ANCHOR WINDLASS Lewmar V10 hydraulic powered Windlass.

ANCHORS 2 x Manson Kedge 210kg galvanised bow anchors  
Connected to 19mm x 165m high tensile galvanized studlink chain.

AFT WARPING CAPSTANS 2 x Lewmar C10 Hydraulic

PASSERELLE Besenconi Hydraulic upgraded heavy duty three stage  
Telescopic stainless steel Passerella 6.1m

BOAT CRANE & DAVITS Jet Ski overhead crane and chock system

SWIMMING PLATFORM Hydraulically fall rise and tilt platform with maximum lift capacity of 2000 kg

PASSERELLE Besenconi Hydraulic upgraded heavy duty three stage  
Telescopic stainless steel Passerella 6.1m

UNDEWATER LIGHT 21 x White and Blue Lumishore LED

COMPRESSED AIR Portable air compressor stored in engine room with AC 220V power supply

DIVE COMPRESSOR 300 bar pressure Dive / Ba compressor

## EXCLUSIONS

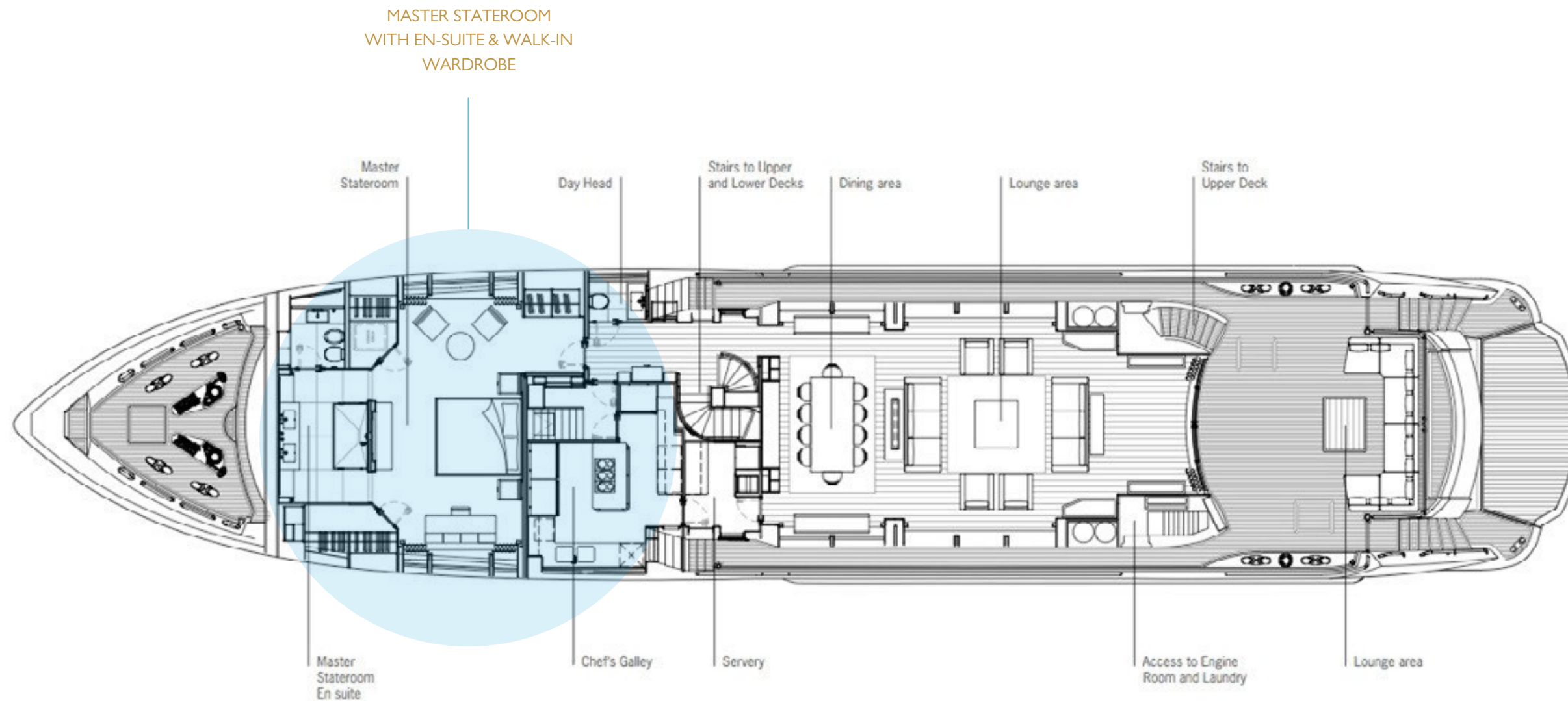
An exclusion list will be provided to all interested parties, which mainly consists of Owners personal effects.

## FULL IN DETAIL SPECIFICATIONS AVAILABLE ON REQUEST

Note: These particulars have been prepared from information provided by the sellers and are intended as a general guide to the vessel. We cannot however, be liable for any inaccuracy. It is up to the purchaser to confirm details of concern to him by survey inspection and/or enquiry of the seller and to ensure that the purchase contract properly reflects his concern and specific details upon which he may rely. We always advise an independent survey.

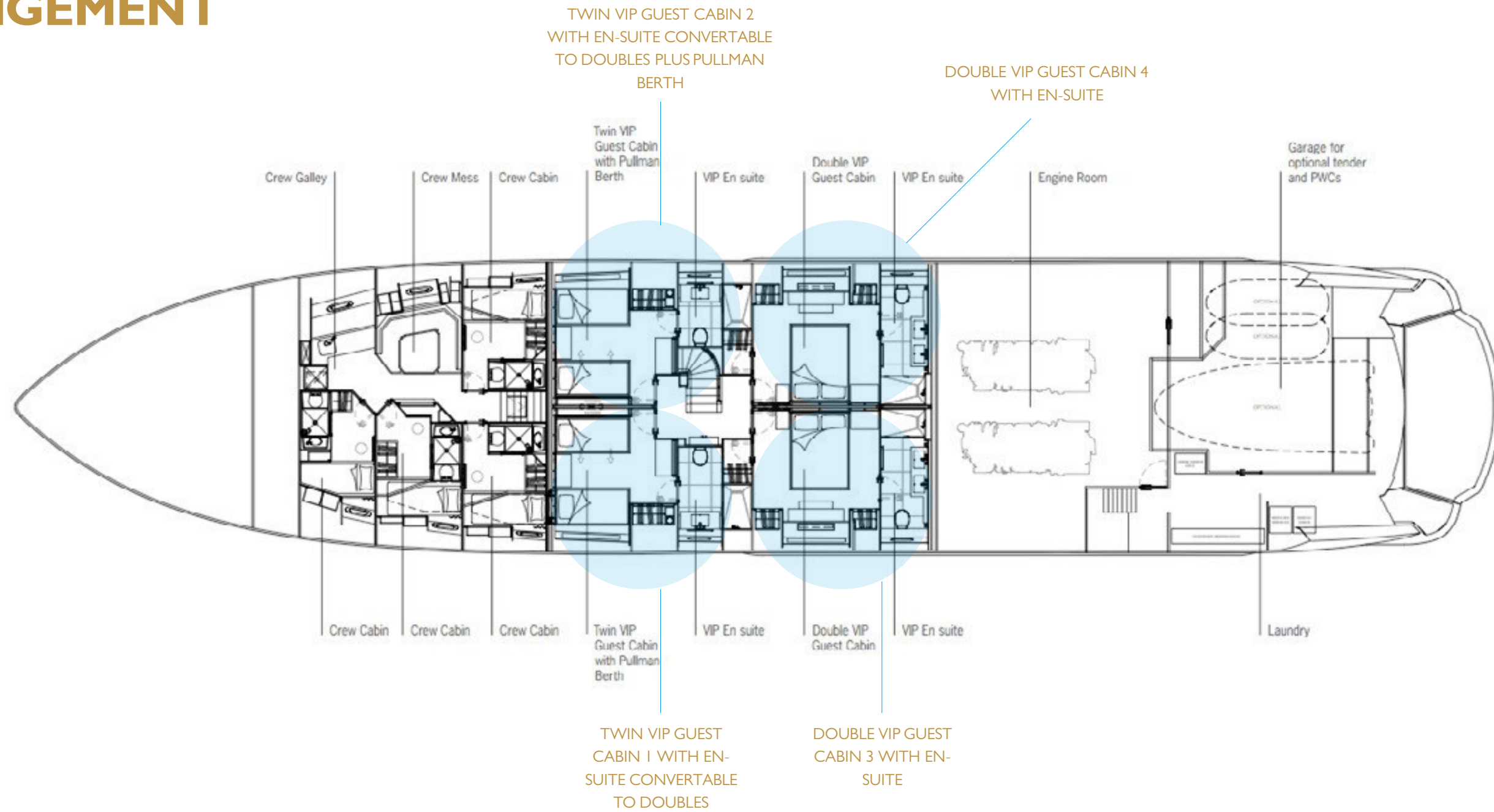
# GENERAL ARRANGEMENT

M.Y Exodus Main Deck



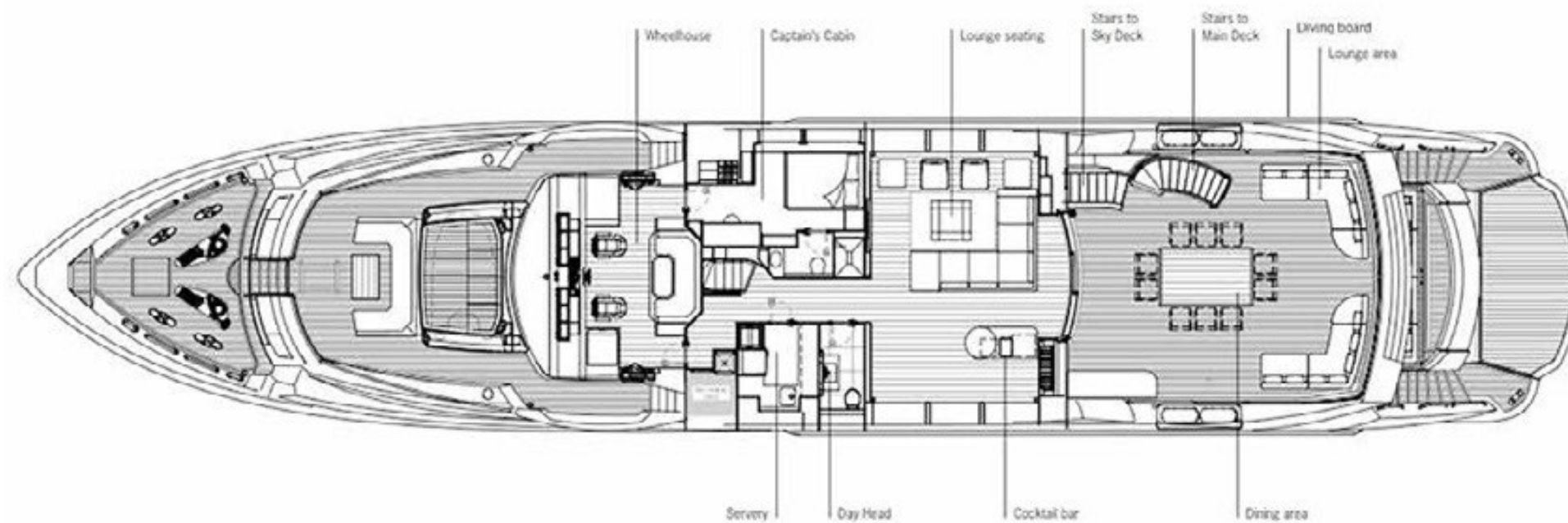
# GENERAL ARRANGEMENT

M.Y Exodus Lower Deck



# GENERAL ARRANGEMENT

M.Y Exodus Upper Deck



M.Y Exodus Sky Deck

