

# Conrad C144S



## 2022 CONRAD SHIPYARD C144S

**LOA:** 145' (44.20m)

**Beam:** 29' 2" (8.89m)

**Max Draft:** 8' (2.44m)

**Speed:** Cruising 11.00 Knots  
Max 13.00 Knots

**VAT Paid:**

**Build Year/Model Year:** 2022 / 2022

**Builder:** CONRAD SHIPYARD

**Type:** Motor Yacht

**Price:** Price On Application

**Location:** Poland

### Additional Specifications For Conrad C144S:

<b>LOA:</b>	145' (44.20m)	<b>Delivery/Model</b>	2022
<b>Beam:</b>	29' 2" (8.89m)	<b>Year:</b>	
<b>Max Draft:</b>	8' (2.44m)	<b>Year Built:</b>	2022
<b>Hull Material:</b>	Steel	<b>Builder:</b>	CONRAD SHIPYARD
<b>Tonnage:</b>	988,000	<b>Model:</b>	C144S
<b>Speed:</b>	Cruising 11.00 Knots Max 13.00 Knots	<b>Type:</b>	Motor Yacht
<b>Fuel Capacity:</b>	13,552.00 Gal	<b>Engines:</b>	Twin, 2022, Inboard, Diesel, CAT, C18 ACERT,
<b>Water Capacity:</b>	3,093.00 Gal	<b>Staterooms:</b>	4
<b>Location:</b>	Poland	<b>Classifications:</b>	
<b>Price:</b>	Price On Application	<b>MCA: ISM:</b>	

## **Specifications**

### **General:**

Exterior Design | Reymond Langton

Naval Architecture | Diana Yacht Design

Mechanical Engineering | Conrad Shipyard

Interior Design | M2 Atelier

Year | Under construction, delivery May 2022

Type | Full Displacement Motor Yacht

Construction | Steel Hull, Aluminum Superstructure

Class | LR + 100A1 SSC Yacht Mono G6, [+] LMC, MCA REG Yacht Code

### **Dimensions:**

Overall Length | 44.27 m (145 ft. 3 in.)

Waterline Length | 42.98 m (141 ft.)

Max Beam | 8.90 m (29 ft. 2 in.)

Draft | 2.45 m (8 ft.)

Displacement | approx. 472 t

Gross Tonnage | 494 GT

### **Performance:**

Cruising/Max Speed | 11/13 knots

Range | 4000 NM @ 10 knots

### **Propulsion:**

Engine | 2x CAT C18 ACERT, B-rated, 500kW @ 2100rpm

Gearbox | 2x ZF W650

Propulsion | 2x Rubber Design Oil-Cooled Shaft Lines

Generator | 2x CAT C7.1 118 kW

Stabilization System | CMC Electric Zero Speed Stabilizers

Bow Thruster | CMC Dualis Electra 90 kW

### **Capacity:**

Fuel Tanks | 51300 l (13552 gal.)

Fresh Water | 11710 l (3093 gal.)

Sewage Capacity | 11300 l (2985 gal.)

Used Lube Oil | 1140 l (303.50 gal.)

Clean Lube Oil | 1020 l (271.80 gal.)

**Equipment:**

Deck Equipment | Maxwell

Hydraulic System | Feebe

Gangway | Feebe

Sliding Tender Crane | Feebe

Air-Conditioning | Condaria

Steering Gear | Jastram

Sewage Treatment | Hamann AG

Navigation & Communication | Furuno / Sailor

Paint System | AWLGrip

Watermaker | Idromar

Shore Power Converter | ASEA

**CONRAD-C144S-EXTERIOR--RL02**



**CONRAD-C144S-EXTERIOR--RL03**



**CONRAD-C144S-EXTERIOR--RL04**



**CONRAD-C144S-EXTERIOR--RL05**



**CONRAD-C144S-EXTERIOR--RL07**



**CONRAD-C144S-EXTERIOR--RL09**



**CONRAD-C144S-AFT PLATFORM--M2\_101**



**CONRAD-C144S-AFT PLATFORM--M2\_102**

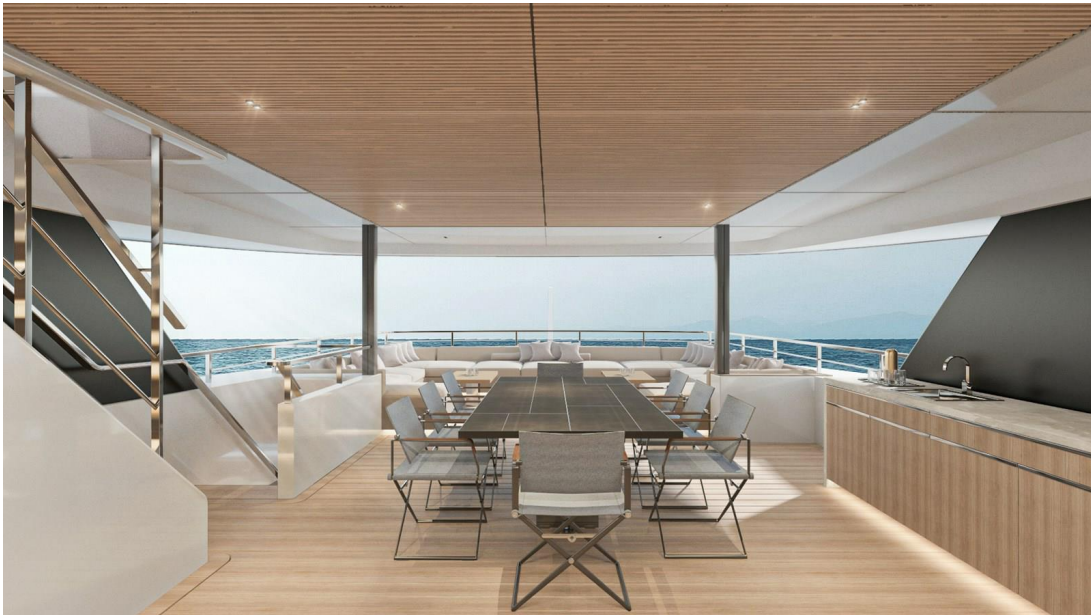




**CONRAD-C144S-BRIDGE DECK AFT--M2\_77**



**CONRAD-C144S-BRIDGE DECK AFT--M2\_78**



**CONRAD-C144S-BRIDGE DECK AFT--M2\_79**



**CONRAD-C144S-MAIN DECK AFT--M2\_68**



**CONRAD-C144S-MAIN DECK AFT--M2\_69**



**CONRAD-C144S-MAIN DECK AFT--M2\_70**



**CONRAD-C144S-SUN DECK--M2\_89**



**CONRAD-C144S-SUN DECK--M2\_90**



**CONRAD-C144S-SUN DECK--M2\_91**



**CONRAD-C144S-SUN DECK--M2\_92**



**CONRAD-C144S-SUN DECK--M2\_93**



**CONRAD-C144S-SUN DECK--M2\_94**



**CONRAD-C144S-SUN DECK--M2\_95**



**CONRAD-C144S-SUN DECK--M2\_96**



**CONRAD-C144S-DAYHEAD--M2\_37**



**CONRAD-C144S-GUEST CABIN--M2\_10**





**CONRAD-C144S-GUEST CABIN--M2\_11**



**CONRAD-C144S-GUEST CABIN--M2\_12**



**CONRAD-C144S-GUEST CABIN--M2\_13**



**CONRAD-C144S-MAIN LOBBY--M2\_29**



**CONRAD-C144S-MAIN LOBBY--M2\_30**



**CONRAD-C144S-MAIN SALON--M2\_24**



**CONRAD-C144S-MAIN SALON--M2\_25**



**CONRAD-C144S-MASTER SUITE--M2\_40**



**CONRAD-C144S-MASTER SUITE--M2\_42**



**CONRAD-C144S-MASTER SUITE--M2\_44**



**CONRAD-C144S-MASTER SUITE--M2\_47**



**CONRAD-C144S-MASTER SUITE--M2\_48**



**CONRAD-C144S-MASTER SUITE--M2\_49**



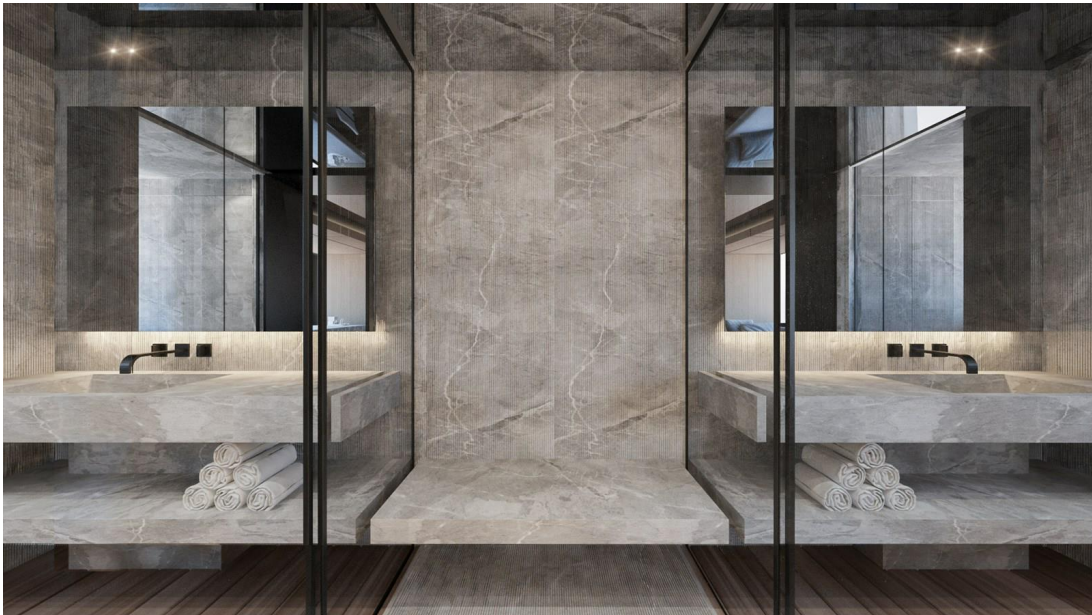
**CONRAD-C144S-MASTER SUITE--M2\_50**



**CONRAD-C144S-MASTER SUITE--M2\_51**



**CONRAD-C144S-MASTER SUITE--M2\_53**





**CONRAD-C144S-MASTER SUITE--M2\_54**



**CONRAD-C144S-SKY LOUNGE--M2\_61**



**CONRAD-C144S-SKY LOUNGE--M2\_62**



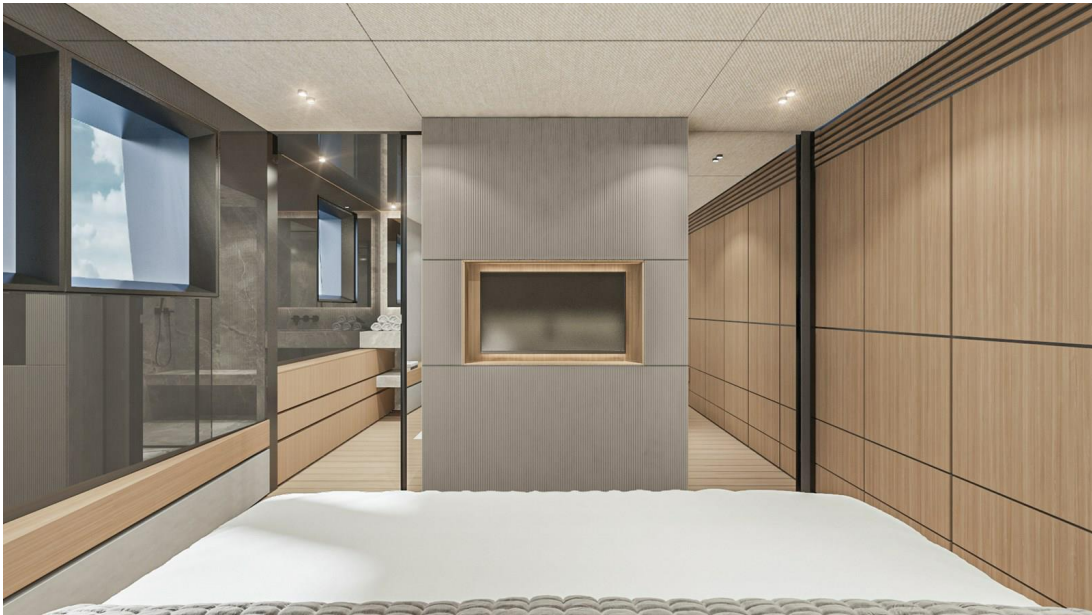
**CONRAD-C144S-SKY LOUNGE--M2\_63**



**CONRAD-C144S-VIP CABIN--M2\_15**



**CONRAD-C144S-VIP CABIN--M2\_16**



**CONRAD-C144S-VIP CABIN--M2\_18**



**CONRAD-C144S-VIP CABIN--M2\_19**



**CONRAD-C144S-WHEELHOUS--M2\_01**



**CONRAD-C144S-WHEELHOUS--M2\_02**



**CONRAD-C144S-WHEELHOUS--M2\_03**



**CONRAD-C144S-EXTERIOR--RL06**



**CONRAD-C144S-EXTERIOR--RL08**



**CONRAD-C144S-EXTERIOR--RL10**



**CONRAD-C144S-EXTERIOR--RL11**

