

Crescent Lady



2020 CRESCENT

LOA: 117' (35.66m)
Beam: 24' (7.32m)
Max Draft: 6' (1.83m)
Speed: Cruising 19 Knots
Max 26 Knots

VAT Paid:

Build/Model Year: 2020 / 2020
Builder: CRESCENT
Type: Motor Yacht
Price: \$11,950,000 USD
Location: FORT LAUDERDALE, Florida
United States

Additional Specifications For Crescent Lady:

LOA:	117' (35.66m)	Delivery/Model	2020
Beam:	24' (7.32m)	Year:	
Max Draft:	6' (1.83m)	Year Built:	2020
Hull Material:	Fiberglass	Builder:	CRESCENT
Hull Config:	Semi-Displacement	Type:	Motor Yacht
Deck Material:	Fiberglass	Engines:	2735 HP, Twin, 2000, Inboard, Diesel, MTU, 12V4000 M90, 150hrs / 150hrs
Tonnage:	232	Staterooms:	5
Speed:	Cruising 19 Knots Max 26 Knots	Sleeps:	10
Ext Designer:	Gregory C. Marshall	Heads:	6
Fuel Capacity:	4380 Gal	Crew Quarters:	3
Water Capacity:	824 Gal	Crew Berths:	4
Holding Tank:	211 Gal	Captain Cabin:	Yes
Flag:	United States	Classifications:	
Location:	FORT LAUDERDALE, Florida United States	MCA: ISM:	
Price:	\$11,950,000 USD		

Overview

Crescent Lady is a brand-new yacht, built by the biggest Superyacht Builder in Canada 'Crescent Custom Yachts', who have been building large yachts for almost forty years.

The 117 is a unique project as its hull was designed in Italy and built by Destiny Yachts in Florida. This solid fiberglass hull was built to ABS standards and her proven performance and design was the perfect foundation for Crescent Custom Yachts to complete this magnificent yacht. With a top speed of 26 knots and a 2000 nautical mile range, her trim tabs and ABT Trac Stabilizers are an added bonus for an already solid cruising yacht.

The interior of the Crescent 117 is filled with natural light from the expansive windows that are found throughout. The interior features clean, contemporary styling, which is complemented by some black oak joinery and stone surfaces throughout. She also features high-end modern fabrics, textured bulkheads with premium Di-Noc wrapping to create additional contrast.

There are five guest cabins which all feature large en-suites. Included is a full-beam master.

For entertaining there are two large, glass, expandable dining tables with carbon fiber style accents. The aft deck table is surrounded by solid teak chairs and the main salon table features white leather chairs. Just aft in the main salon is a retractable TV and opposing lounge seating.

The exterior features an oversized swim platform, a large sun-pad area on the main deck aft as well as on the bow, and four lounge chairs on the sun deck aft. Forward of the Jacuzzi on the Sun Deck are opposing L-Shaped seating areas and a wet bar close by that always ensures a good time on board.

Technical Specifications

Interior

Main Salon

- In the entrance there is a technical space and storage to starboard and a coat closet to port
- Down both the port and starboard sides of the salon are large quartz counters with storage cabinets below
- Salon aft has two l-shaped lounges and two stools which seat 10 that surround a solid timber table which has lighting inside
- Just forward is a 64inch Sony TV (XBR-65X950G) on a lift, hidden away under a two-inch white quartz counter all controlled by a Crestron iPad controller
- Built in Aim 7 SpeakerCraft surround sound speakers throughout
- Adjacent to the TV unit is a large extendable glass dining table which runs thwart ship and seats 10 on the leather Elite Modern American chairs
- Forward of the dining table are large mirrors

Day Head

- Grohe Chrome Faucet and Kohler sink mounted on Grey wave quartz counter
- Grohe Chrome towel rack

- Grohe Chrome built in brush holder
- Opposite day-head is a large hanging closet

Stewardess pantry

- Sliding door on entry
- Grey wave quartz counters
- Lots of storage
- To port is a U-Line (U-ADA15IMS-00B) icemaker
- Dual Kohler Stainless steel sink with insinkerator food waste disposal unit, drying racks, inbuilt counter soap dispenser and pull-out spray high arc style chrome faucet
- To starboard is a U-Line (U-1224RINT-008) refrigerator
- Commercial CMA (UC65E-M2) dishwasher rack with ultra quick wash cycle
- Forward is a smart hinged pantry storage
- Frigidaire (FGHN2868TF2) stainless steel dual door refrigerator and freezer draw unit

Galley

- Abundance of soft close storage draws and cupboards throughout
- Grey wave infinity waterfall quartz counters throughout
- Thermadore (MB30WS/01) stainless steel and glass microwave
- 2 x Thermadore (MEDS301WS/01) stainless steel and glass smart wifi enabled oven with steam capabilities
- Thermadore (CIT365TB/01) five burner Schott Ceran induction cook top with expanding stainless steel range above
- Kohler Stainless steel sink with drying rack, inbuilt counter soap dispenser and pull-out spray high arc style chrome faucet
- 54inch Samsung Flat screen TV
- Subzero (ID-24F) dual freezer draws
- U-Shaped settee to starboard with a quartz counter seats 4 people with additional storage under seats

Accommodation

She can accommodate ten guests in five cabins plus an additional five crew in three cabins.

Forward VIP Cabin

- 32inch Samsung Flat Screen TV
- Dometic CruiseAir reverse cycle heating and air conditioning control

- Cedar lined walk-in closet with hanging spaces, storage draws and cupboards
- Queen Size Berth
- 2 x LED reading lights and bed side tables flank the berth

VIP Head

- Grohe Chrome Faucet and Kohler sink mounted on grey quartz counter
- Grohe Chrome towel rack
- Headhunter Royal Flush electric head unit with Grohe Toilet roll holder
- Grohe Thermostat shower with glass door and tiles throughout plus additional seating area in shower

Lower deck VIP

- Queen Berth with LED reaching lights and bed side tables on either side
- 24inch Insignia Flat Screen TV
- Desk with two inbuilt draws and cupboard

Lower VIP Head

- Grohe Chrome Faucet and Kohler sink mounted on grey quartz counter
- 3 x Grohe Chrome towel rack
- Headhunter Royal Flush electric head unit with Grohe Toilet roll holder and built in Grohe brush holder
- Grohe Thermostat shower with glass door and tiles throughout plus additional seating area in shower
- Walk-in cedar lined hanging closet with shelving and draws

Port mid guest cabin

- 2 x Single Berths with LED reaching lights and bed side tables on either
- 24inch Insignia Flat Screen TV
- Hunter Douglas blind
- Domatic heating and air-conditioning controls in closet

Port mid guest cabin Head

- Grohe Chrome Faucet and Kohler sink mounted on grey quartz counter
- 2 x Grohe Chrome towel racks
- Headhunter Royal Flush electric head unit with Grohe Toilet roll holder and built in Grohe brush holder
- Grohe Thermostat shower with glass door and tiles throughout plus additional seating area in shower
- Hunter Douglas blind

Starboard mid guest cabin

- 2 x Single berths with LED reading lights and bed side table with USB charging ports
- 24inch Insignia Flat Screen TV
- Hunter Douglas blind
- Domatic heating and air-conditioning controls in closet

Starboard mid guest cabin Head

- Grohe Chrome Faucet and Kohler sink mounted on grey quartz counter
- 2 x Grohe Chrome towel racks
- Headhunter Royal Flush electric head unit with Grohe Toilet roll holder and built in Grohe brush holder
- Grohe Thermostat shower with glass door and tiles throughout plus additional seating area in shower
- Hunter Douglas blind

Master Cabin

- This full-beam aft master cabin is located to maximize comfort whilst underway especially in a large sea state.
- Crestron light switches throughout
- 3 inch Floating Quartz Desk to port with 4 draws
- Hunter Douglas blinds
- Centerline King Size berth with bedside tables equipped with USB charging, draws and LED reading lights
- 56inch Samsung Flat screen TV on starboard bulkhead with surround sound speakers
- To starboard there is seating for four under which has storage
- Aft there is a large cedar lined walk-in wardrobe with hanging space, shelving, draws and accent lighting
- Dometic heating and air-conditioning

Master Cabin Head

- 2 x Grohe Chrome Faucet and Kohler sink mounted on quartz counter
- 3 x Grohe Chrome towel racks
- Headhunter Royal Flush electric head unit with Grohe Toilet roll holder
- Grohe Smart Thermostat shower with glass door and tiles throughout plus large Grohe 9inch rainfall shower head and additional seating area in shower
- 2 x large laundry cabinets

Crew Mess

- GE Stainless steel microwave (PEM10SFC)
- U-Line Refrigerator (U-1224RINT-00B)

- L-Shaped settee with dining table
- Stainless steel sink and large counter top space
- 2 x Asko Classic Series Stacked Washer & Dryer Set with Front Load Washer and Electric Dryer in White (ASWADREW2082) - 24 Inch Front Load Washer (W2084W) & 24 Inch Electric Dryer (T208VW)
- Maretron TSM800C System Display

Crew Cabins

All accessed aft and branch off the crew mess

- Captains cabin features double berth and private ensuite head
- Double berth features shared ensuite head
- Bunk Cabin features shared ensuite head

Bridge

Aft in the Bridge are two large raised lounge chairs with tables in order for guests or crew sitting there to have a clear line of site of all surroundings. Forward is large chart table to port and centerline is a comfortable Stidd helm chair. Forward of the helm chair you can find:

- 3 x Oversized Garmin Navigation Displays (22" Garmin SPS Map Touch Screens) with Garmin Radar 1226 XHD2
- 2 x Multi Function Garmin Mini Displays
- Garmin Auto Pilot Display
- Icom VHF (IC-M506)
- BCS Trim Tab Controls
- BCS Bilge Pump Controls and Alarms
- Exalto Variable Speed Wiper Control Unit
- Kahlenberg Ships Horn & Sound Signal controls (M-512)
- ABT Trac Bow and Stern Thruster Controls
- Crestron Lighting Throughout
- MTU Electronic Engine Controls
- Maretron display

Deck

Bow

- 2 x Maxwell VWC 4500 Anchor Windlass'
- Anchors: Stainless Steel "Pool" type anchors about 300lbs

- Tempesta 316 Stainless Steel cleats throughout
- Sun Pad area

Boat Deck

- Steelhead Marine CT2500 Davit with max capacity of 2500lbs
- 4 x Lounge chairs
- Balboa Coast Spas 4 Person Jacuzzi

Wet bar with:

- Blanco Stainless-steel sink
- 2 x Marvel 2.9 cu. ft. refrigerator (M015RAS2LS)
- Napoleon Built-in Grill multiple burners with an additional infrared mode

Flybridge Helm Station

- 2 x 17" Garmin GPS Map Touch Screens

Safety

- Zodiac Survitec 8 person Life Raft
- Kahlenberg Ships Horn

Swim Platform

- Large Stainless-steel cleats adjacent to Maxwell 3500 capstan to both port and starboard sides
- Shore-power connection available to both port and starboard sides
- Removable Stainless steel staple rails with large cleats are lined up along the aft

Aft Deck

- Large expanding glass and carbon fiber style accent table with 6 teak chairs
- Oversized sunbed and lounge area aft

Wet bar with:

- U-Line Icemaker (U-ADA15IMS-00B)
- Kohler Stainless steel sink
- Samsung TV
- Maxwell 3500 Captains on the aft deck and swim platform
- New Wave Fab - 10 step Aluminum Side Accommodation boarding Ladder

Mechanical

Generators: 2 x Northern Lights 55 kW

Main Engines: 2 x MTU Detroit Diesel 2735hp - 12V4000 engines (DD6934A) - T1227K00 - *Sold with full warranty*

- Polished Cypriot Nickel Bronze exhaust piping
- Polished Chrome MTU / DDC Rocker Covers

Transmissions: 2 x Detroit Diesel Marine Transmission Ratio 2.50:1 (Model: DD6984A)

- Gianneschi (ML/1900542) fuel pump
- RCI Fuel Purifier (FP 1000) attached to Fill-Rite Counter
- Racor Fuel Filters

Electrical

- Electricity: Atlas Marine Switchboard 3P 220V with full auto paralleling
- Shore Power: Zeus Shore power converters 2 x 100 Amp (ZC50MT2E-2U)
- Lighting System: Crestron controlled lighting system, fully integrated into the vessel' entertainment control system
- Underwater Lights: 4 x 350 watt
- 2 x Victron Energy Centaur Battery Chargers 24v 60amp
- Victron Energy SKYLLA-TG Battery Charger 24v 100amp \
- Discover Dry Cell Traction Valve regulated Batteries throughout
- Crestron Green Light System

Ancillary Equipment

- Bow Thruster: 50hp hydraulic system
- Stern Thruster: 38hp hydraulic system
- Stabilizers: ABT TRAC Zero Speed
- Aqua Air HVAC System: Chilled water with 3 x 50-ton chillers
- 2 x Sea Recovery Watermakers 1800 GPD
- Water Heaters: 2 x Rheem 40gal (818V40DT C)
- Sanitron Ultra Violet Water Purifier
- Shelco Micro Guardian Water Filter (4FOS2)

- 2 x Head Hunter Mach5 Fresh Water Pumps
- Sting Ray Head Hunter Salt Water Pump
- Black Water Treatment: Head Hunter RF 200B
- 2 x 7.5hp Baldor Reliance Fire Pumps

Tenders & Watersports

Room on boat deck for:

- 17' (5.2m) tender
- 2 Jet skis on boat deck
- 4x paddleboards; 2x kayak

DISCLAIMER

The Company offers the details of this vessel in good faith but cannot guarantee or warrant the accuracy of this information nor warrant the condition of the vessel. A buyer should instruct his agents, or his surveyors, to investigate such details as the buyer desires validated. Hours listed may vary from actual hours due to recent use. Purchaser is encouraged to verify hours prior to purchase. This vessel is offered subject to prior sale, price change, or withdrawal without notice.

Profile



Profile



Profile



Aft Deck Dining Area



Main Salon



Main Salon



Main Salon



Main Salon



Main Salon Dining Area



Main Salon Dining Area



Stewardess Pantry



Stewardess Pantry



Stewardess Pantry



Galley



Galley



Upper Deck VIP Cabin



Upper Deck VIP Cabin



Upper Deck VIP Cabin Head



Upper Deck VIP Cabin Ensuit Head



Lower Deck VIP Cabin Ensuit Head



Starboard Guest Cabin



Starboard Guest Cabin Ensuit Head



Starboard Guest Cabin



Starboard Guest Cabin Ensuit Head



Master Cabin



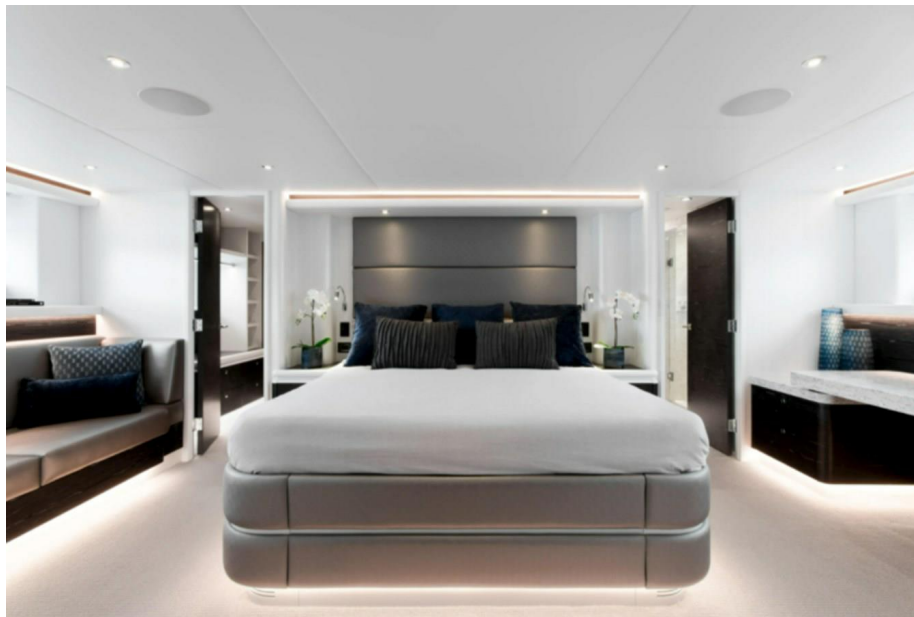
Master Cabin



Master Cabin Ensuit Head



Master Cabin



Bridge



Bridge



Crew Mess



Crew Mess



Sundeck



Sundeck - Flybridge



Boat deck



Boat deck



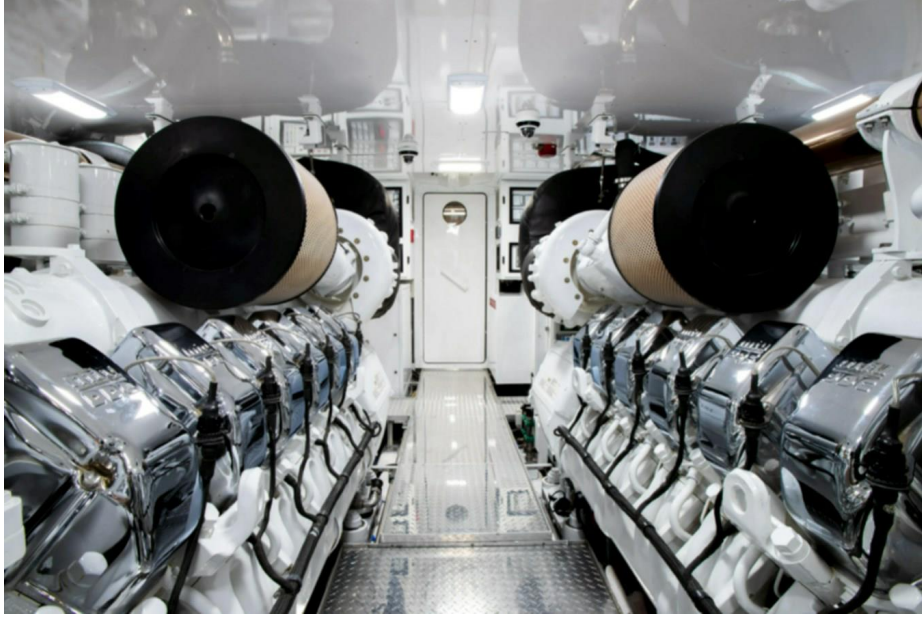
Sundeck Wing Station



Engine Room



Engine Room



Profile



Profile



Profile



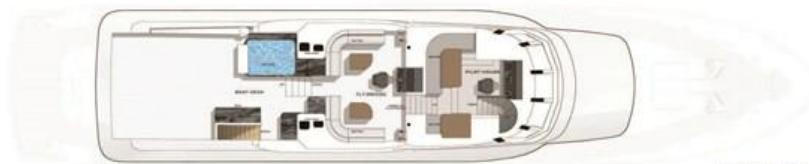
Profile



Crescent 117 GA



OUTBOARD PROFILE



SUN DECK & PILOTHOUSE



MAIN DECK



HULL DECK

SHEET 1/1	FINAL
000-01 GENERAL ARRANGEMENT REV -	

CRESCENT 117

DATE	DESCRIPTION

DESIGN: JAMES W. BARNETT
 DRAWING: JIM & BOB
 YEAR: 1999/2007
 COMPANY: BARNETT