

XSR 85 #NB201



XSR 85 #NB201

Asking price

EUR 5,450,000

Built

2022, SARP Yachts, Turkey

Length

26m (85.4ft)

Beam

6.46m (21.3ft)

Draft

1.26m (4.2ft)

Gross Tonnage

125

Cruising speed

12 knots

Maximum speed

21 knots

Range at cruising speed

1,000 nm

Flag

Turkey

Lying

Turkey

Class

CE Certification

Exterior Designer

Red Yacht Design

Interior Designer

Red Yacht Design

Construction

Hull – Fast Displacement Composite, Superstructure – Carbon Fiber

Crew

4

Guest

8

Cabins

4 Guest Cabins & 2 Crew Accommodations

Engines

2 x MAN i6 - 800 800hp 2,300rpm



ALEX G. CLARKE
203.722.3047
Alex@DenisonYachting.com
DenisonYachting.com

1535 SE 17th Street #119 Fort Lauderdale, FL 33316

XSR 85 #NB201

About

The SARP XSR 85 #NB201 is a ground breaking project that is less than 2 months away from being completed.

She features a fast displacement hull form with naval architecture by Van Oossanen Naval Architects out of Holland. Composite hull and carbon fiber superstructure gives her a top speed of 21 knots and a cruising range of 1,000nm at 12 knots.

By utilizing a large amount of glass both in the hull and superstructure to merge the interior and exterior spaces into one the layout removes as many obstructions as possible creating an open floor plan. You can literally stand in the salon and have a line of sight from the bow to transom. There is an open galley to port that can also be enclosed depending on the level of service expected by the guests or owner/operator.

The aft deck is a wide open space that flows from the salon to the lounge area located directly outside. From there a full beam set of stairs leads down to the swim platform that has the hydraulic platform that doubles as a launch for a tender or jet ski.

A central staircase leads down to 4 spacious cabins including a full beam master, but the fourth cabin located at the base of the stairs can be converted and opened up into a lower lounge area. This space can be utilized in a number ways and I feel is extremely practical as it allows one to configure the lower accommodations to fit a large range of guest parties.

Key Features

Open floor plan made possible by large amount of glass utilized in hull and superstructure

Embedded glass in the bulwarks to give a line of sight to the water

Upper sundeck with large fixed hard top and glass skylight, sitting area with full bar and upper helm

A central sculptural staircase leading down to four spacious cabins including a full beam Owner's Suite



ALEX G. CLARKE
203.722.3047
Alex@DenisonYachting.com
DenisonYachting.com

1535 SE 17th Street #119 Fort Lauderdale, FL 33316

XSR 85 #NB201

Full Details

General

Yard No: NB201
Type: Fast Displacement Hull Form
Builder: Sarp Yachts
Naval Architect: Van Oossanen Naval Architect, Netherlands
Exterior Stylist: Red Yacht Design, Turkey
Interior Designer: Artline Interior, Netherlands
Engineering: Sarp Yachts
Construction: Composite Hull; Carbon Fiber Superstructure
Classification: CE

Hull

Length Overall: 26.00m
Length Hull: 23.95m
Length Waterline: 23.86m
Beam Moulded: 6.46m
Beam Waterline: 6.02m
Draft (Design): 1.19m
Draft (Full Load): 1.26m

Tonnage

Gross Tonnage: 125 GT
Displacement (Design): 69,40 tonnes
Displacement (Full Load): 82 tonnes

Speeds

Maximum Speed: 21 knots
Cruising Speed: 12 knots

Range

1000 N. Miles approx. @ cruising speed

Tank Capabilities (approx.)

Fuel Tank: 7,850 liters
Fresh Water Tank: 2,250 liters
Grey & Black Water: 1,250 liters

Equipment

Main Engines: MAN 2x i6-800 800Hp (588kW) @2300rpm
Gear Boxes: ZF 2x 550-1 V (2.96:1) Reverse Reduction
Shafts & Propellers: CJR 2x 5 BLH AB2 NiBrAl 975X1077 mm; CJR 2x Shaft 80 mm Marinemet 25 Duplex SS 4600 mm
Generators: KOHLER 2x 35EFOZDJ 35 kW, 1500 rpm
Electricity: 3-phase, 4-wire and PE system, grounded neutral 230V / 400V, 50 Hz
Batteries (optional): VICTRON 10x Li-ion Service Batteries; VICTRON 4x AGM Starter Batteries
Batteries: EXIDE 2x Gel Emergency Batteries
Steering System: DATA 1x Electronic Hydraulic
Bow Thruster (37kW optional): SIDE POWER 1x 37Kw
Stabilizers (optional): CMC 1x Stabilis Electra SE60.5.4.100
Interceptor (optional): HUMPREE 2x HE950
Fuel Separator (optional): ALFA LAVAL 1x MIB 303
Bilge Pumps: RULE Submersible Bilge Pumps for each watertight compartment; JABSCO Manuel Bilge Pumps for technical areas
Watermaker (optional): SCHENKER 1x Modular 150l/h, 500 ppm, 230V
Water Heaters (2nd optional): DIKO 2x DTB-50-2-220.1-SS316L 50 l 6 bar, 220V 2.0 kW 50 Hz
Fresh Water Pumps: GIANNESCHI 1X GDJ/3 24V+400V, 2800 RPM, 2X50 1/MIN, 4.2 BAR, 230V
WC System: TECMA: 5x Macerator Toilets Evolution 24V Soft Close
Air Conditioning: VECO 2x 65.000BTU Chiller Units, 380V/50Hz 3 phase with 45.000BTU/h Fresh Air Make-up Unit
Anchor Windlasses: DATA 1x DZC 1400-2 EPL Windlass 1660 kg, 12m/min, 3 kW, 380 V
Stern Capstans: DATA 1x DHC 1000 E-PL, 1000 kg, 13m/min, 2.2 kW, 380
Anchors and Chain: ULTRA MARINE 1x 80 kg Delta Type, SHHP Anchor; 14mm Stud link Galvanized Chains, 110 m
Davit (optional): ATLAS 1x 2000 Carbon Portable 500kg SWL
Platform (optional): OPACMARE 1x 3384.50 Transformer w/pop-out unit, 1300kg SWL
Mooring Bitts, Fairleads: Stainless Steel 316L polished Custom Made
Stanchions & Railings: Carbonfiber Custom Made
Bimini Awning (optional): MAKEFAST 1x Electronically Operated Sunroof
Wheathertight Doors: MIMARIN 2x Semi-Automatic Sliding doors for port & stbd. Salon sides (automatic optional); MIMARIN 1x Manual Zig-Zag Accordion type Aft Door for Salon entrance; MIMARIN 1x Automatic L type Sliding Door for Sundeck entrance
Hatches: BOFOR 5x Watertight Hatches

Fire & Safety

Safety: Inflatable Life Rafts x2; Safety equipment according to CE and Flag State
Fire Fighting: STATX 2x 2500E Electric Fire Extinguisher for Engine Room; STATX 1x 1000E Electric Fire Extinguisher for Battery Room (optional); STATX 2x 1000E Electric Fire Extinguisher for Electric Panel Room (optional); Portable fire extinguishers located throughout in accommodation; Firefighting equipment according to CE and Flag State
AMS (optional): PRAXIS Customized Alarm Monitoring System integrated in the INS system for Wheelhouse, Sundeck, Control Room & Crew Mess. Tank levels monitoring, Bilge levels monitoring, Hatches and Doors signals monitoring, Main Engine & Genset data monitoring, Navigation lights control, PMS System control; PRAXIS AMC software on INS Multifunction Workstations, 108 Digital Inputs, 24 Analog Inputs, 60 Software Inputs, 10 Mimic Diagrams
FAS: PRAXIS Fire Alarm System with 5.7" glass TFT Operator Panel and I/O module for connecting detectors, call points and sounders

Tenders & Watersports Equipment (Owner Supply)

All leisure equipment is to be supplied by the Owner with respect to the design conditions. Builder will approve the type and dimensions of the subject equipment due to the capacity of the cranes and reserves area dimensions. The Builder is to provide cradles for the subject equipment.

Paint System

Interior tanks, hull topsides, superstructure topcoat; underwater surfaces will be with full system Boero Yacht Coatings.

Deck Joinery & Deck Furniture

All deck joinery work shall be solid teak. Final dimensions of the teak planks are to be approved by the exterior designer. Teak planks are to have a thickness of min 10mm after the final sanding. Areas are to be covered with teak: Sundeck, all Exterior Stairs and All Exterior Decks. Deck furniture and decoration of the yacht shall be basically in accordance with the specifications and ancillary documents as prepared by the exterior designer. The fixed exterior furniture will be manufactured composite.



ALEX G. CLARKE
203.722.3047
Alex@DenisonYachting.com
DenisonYachting.com
1535 SE 17th Street #119 Fort Lauderdale, FL 33316

XSR 85 #NB201

Full Details

Accommodation

The yacht has three decks; Lower Deck, Main Deck and Sun Deck. The Yacht is designed and outfitted to accommodate 8 guests and 4 crews; with a total of 12 persons.

Cabins: Full-beam Owner Cabin on aft lower deck with bathroom, port guest cabin with twin bed and bathroom which can be convertible to TV lounge, stbd guest cabin with bathroom, full-beam VIP cabin on forward with bathroom.

Lower Deck

Engine Room, Separate Laundry and Storage at the stern. Full-beam Owner Cabin with vanity desk, and bathroom with separated shower and toilet areas. Port Guest Cabin with twin bed and bathroom which can be convertible to a TV lounge. The lounge provides guests with complete comfort by turning into a cabin if necessary. Stbd Guest Cabin with bathroom, full-beam VIP Cabin on forward with bathroom. Two twin Crew Bunk Cabins with bathrooms and Crew Mess on forward.

Main Deck

Sunbeds and lounge chairs with a table at the aft deck. Main salon with large sofa, arm chairs, coffee table and bar integrated with Galley by an electric sliding glass wall. Galley located at the center and Wheelhouse located on forward.

Sun Deck

Second Station with helm seats, large lounge sofas suitable for dining set-up and fully equipped wet bar with bar stools.

Current Production Status

The hull & superstructure constructions are finished. The assembly of the hull & superstructure is done. The hull top coat paint is applied. The hull and superstructure glasses are installed. The teak decking is finished. The Main Engines are installed. Lower deck and main deck plumbing and wiring are done. The interior furniture is 60% finished; installations are on progress. The overall production is 70% finished.



ALEX G. CLARKE
203.722.3047
Alex@DenisonYachting.com
DenisonYachting.com

1535 SE 17th Street #119 Fort Lauderdale, FL 33316

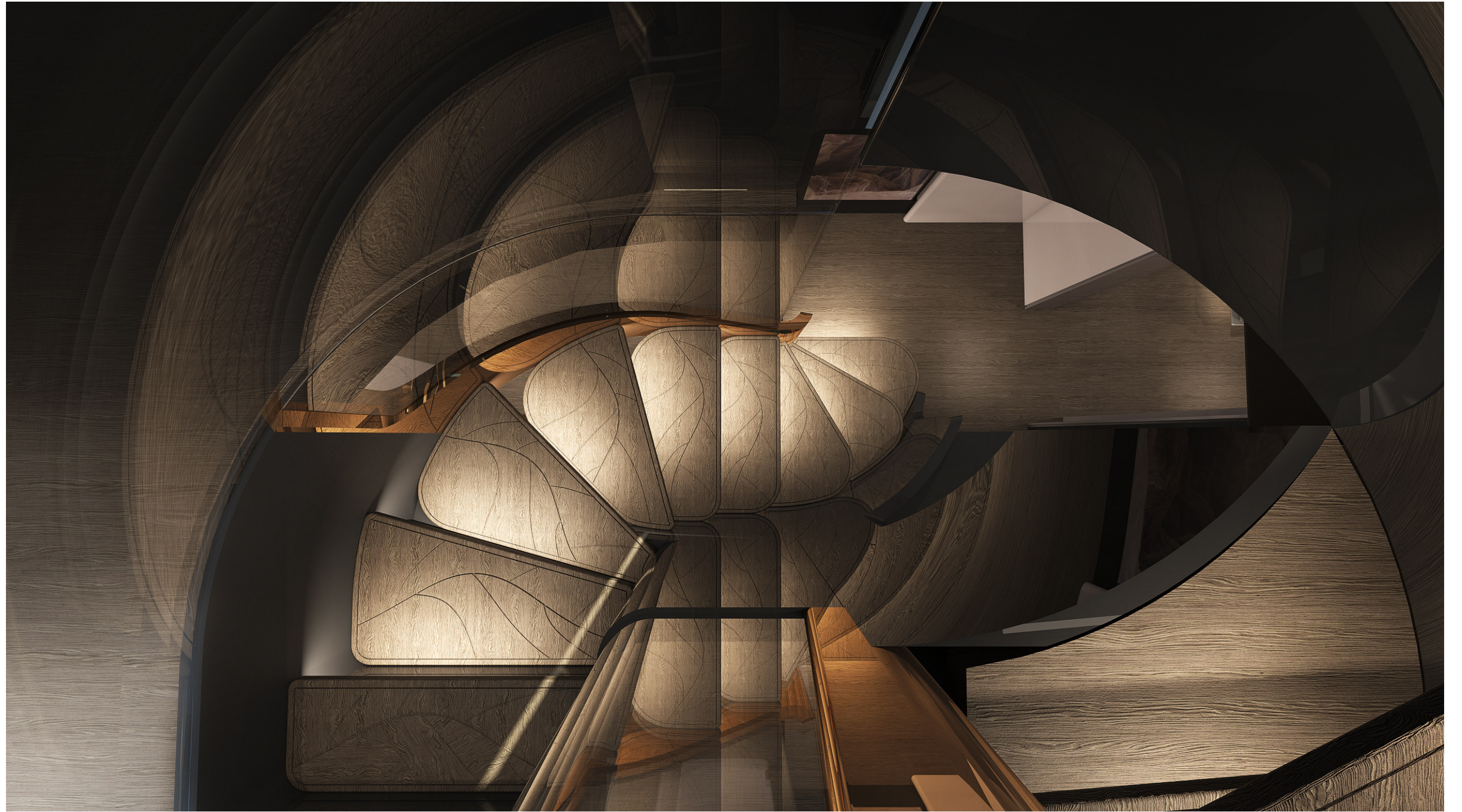


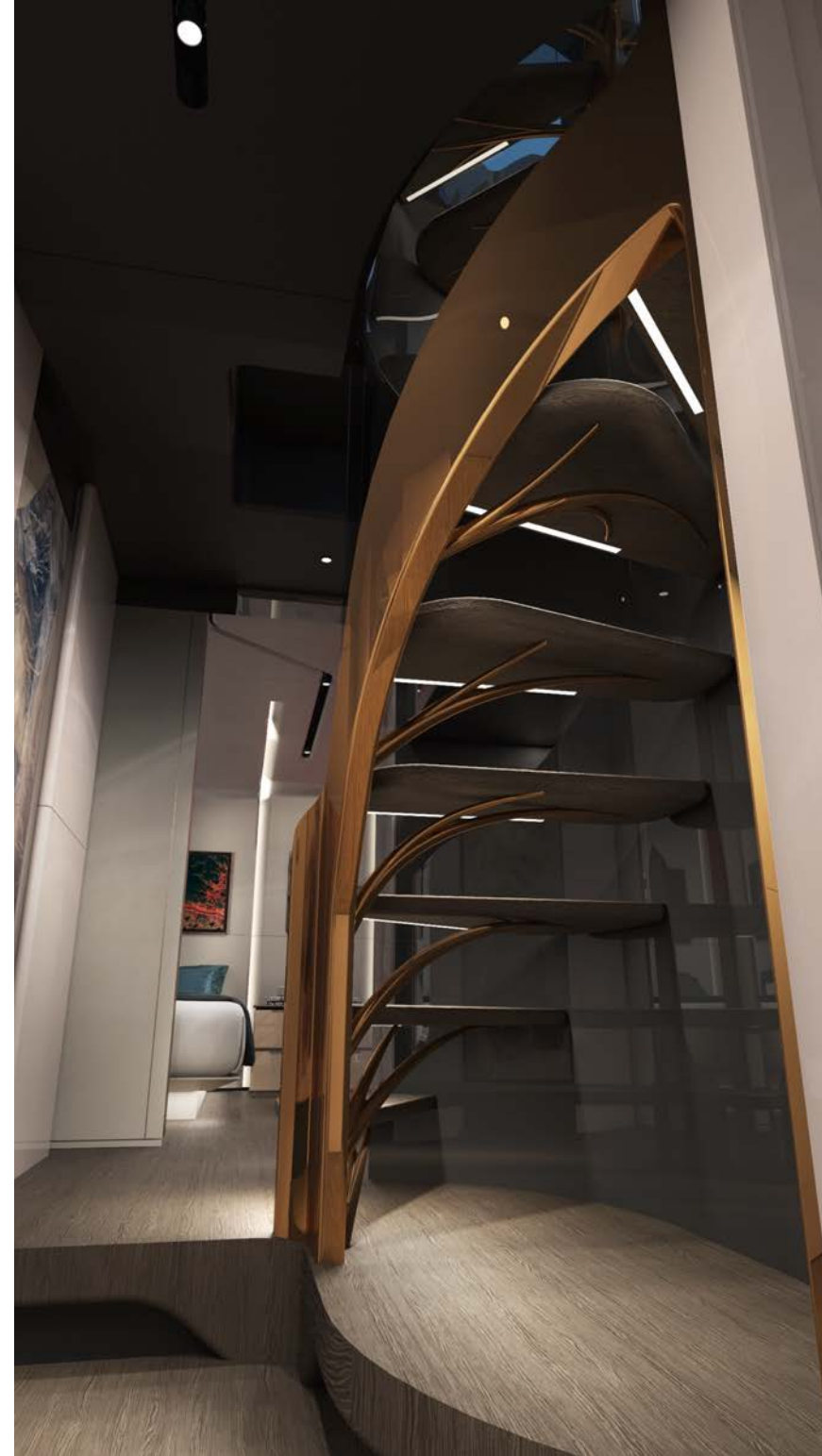
























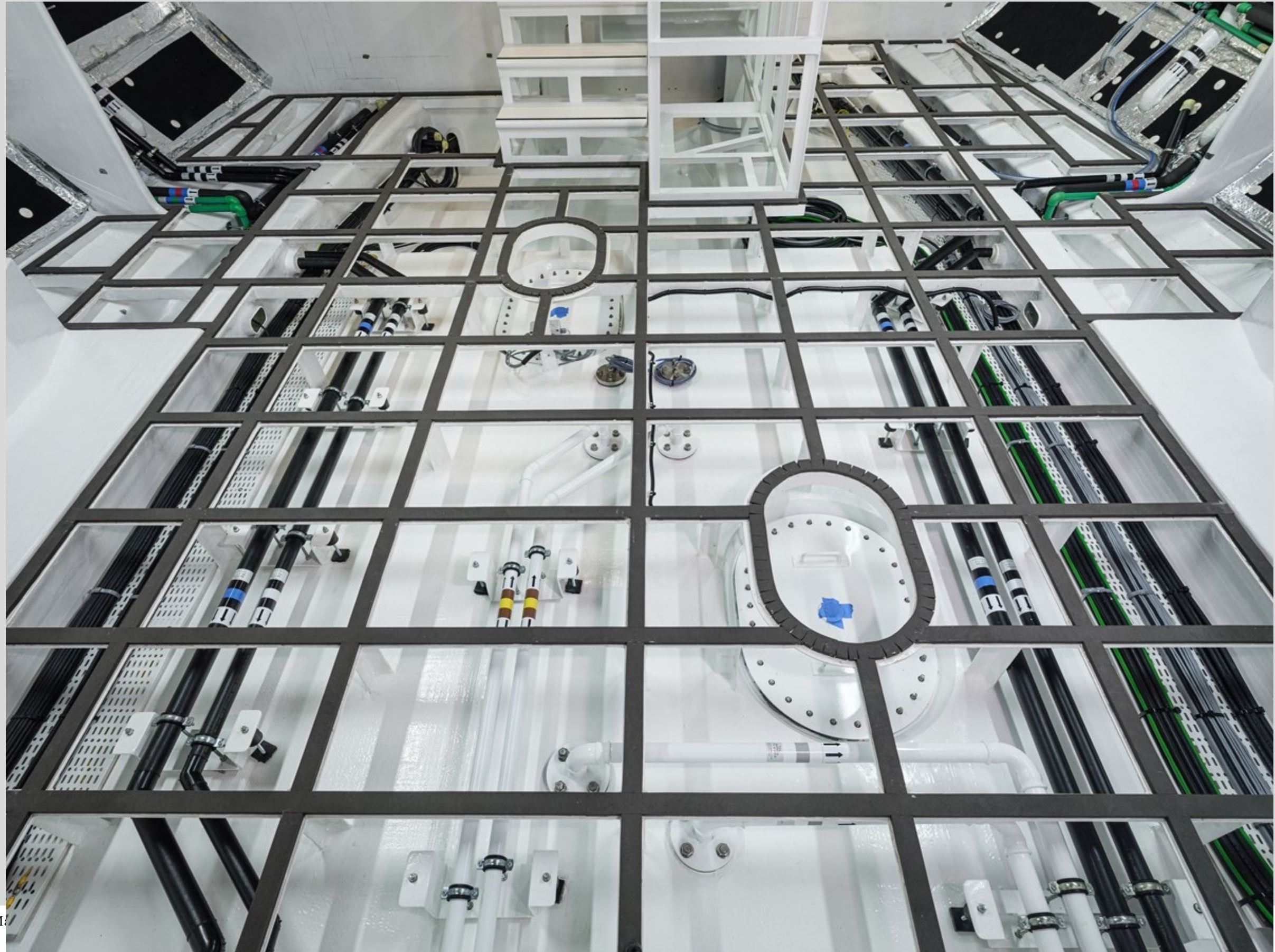








M



M/



M:

















M:



M:



M:



M





ALEX G. CLARKE
203.722.3047
Alex@DenisonYachting.com
DenisonYachting.com

1535 SE 17th Street #119 Fort Lauderdale, FL 33316