

BAGLIETTO T52

170' BAGLIETTO | 2024

ASKING PRICE: €36,850,000



BAGLIETTO T52 HULL #04

Asking Price
EUR 36,850,000

Year / Built
2024 Baglietto

Hull Configuration
Full Displacement

Length
170 ft/52 m

Beam Over All
31 ft/9.50 m

Draft at Full Load
8.8 ft/2.70 m

Gross Tonnage
497

Cruising Speed
11 knots

Max Speed
16 knots

Range at Cruise Speed
4,500 nm

Flag
Italy

Location
La Spezia, Italy

Classification
+100A1 SSC Yacht Mono G6 LMC

Exterior Designer
Francesco Paszkowski Design

Interior Designer
Studio Vafiadis

Construction
Hull - Steel / Superstructure - Aluminum / Deck - Teak over Aluminum

Naval Architect
Baglietto

Emission Regulation
EPA Tier III

Guests
12

Cabins
6

Heads
9

Crew
9/10

Engines
2x CAT C32 1,470 hp @ 2,300 rpm

Fuel Capacity
18,494 gallons/70,000 liters

Water Capacity
3,963 gallons/15,000 liters

Generators
2x CAT 7.1, 118 ekW

Black Water Capacity
914 gallons/3,460 liters

Grey Water Capacity
1,400 gallons/5,300 liters

BAGLIETTO T52 HULL #04

Propellers Outward rotating, 5 blades - 1,500 mm diameter (approx.) in Nibral; fixed pitch		Bow Thruster 1x Transversal propeller, electric motor driven 110 kW; 2 fixed pitch counter rotating		
Steering System 2x Hydraulic pistons with twin pumps power pack		Rudders 2x Semi-balanced spade rudders	Gearbox ZF 3000	
Shore Converter 100 kVA/80 kWe	Water Lubricated Shafts Aquamet 17, d=130mm	Fresh Water Maker 1x Duplex MC9 IDROMAR, Stainless Steel - 3,698 gallons/14,000 liters a day		
Sanitary Treatment Tecma Toilet System/Smart Toilets	Grey/Black Water System SELMAR or equivalent	Fuel Purifier GEA Westfalia - 369 gallons/1,400 liters an hour		
Anchor Winch Open Sistemi; 16m/min, drum d=170 mm	Capstans Open Sistemi; 15m/min, drum d=170 mm	Anchor 2x HHP balanced 360 kg each (approx.)	Anchor Chain 2x 150 m, U2 grade, 1900 stud link chain	
Gangway Custom electrohydraulic		Lube Oil Tank 211 gallons/800 liters	Sludge 211 gallons/800 liters	Bilge 264 gallons/1000 liters
Stabilizer 1x Pair of stabilizing fins under way and at anchor and wing profiles				

BAGLIETTO T52 HULL #04

BROKER COMMENTS

This 2024 Baglietto T52 is hull #4 in the popular series was launched and christened June 15th with delivery scheduled for Summer 2024. This offers a buyer an excellent opportunity to take delivery prior to the upcoming Mediterranean summer season. Baglietto has sold 10 models in this popular series with the next available delivery slot being late 2027 so take advantage and skip the 3 year wait.

Ordered and customized by a very experienced yachtsman with upgraded interior decor by Studio Vafiadis and project management by Richard Hein and The A Group who reviewed and revised the technical specifications. In addition the owner's long time and experienced captain with a fantastic reputation on the charter market has provided input over the entire build process with the end result being the highest optioned T52 ever built by Baglietto.

An extensive list of upgrades and technical specifications are available. A quick look at some of the upgrades are as follows:

- Upgraded marble & onyx stone throughout the interior decor and exterior counters with backlighting. Calcata Macchia Vecchia found throughout the decor
- Matterhorn white hull & superstructure are accented by Metallic 'Riva' silver with a black extended hardtop
- Fire pit, added custom exterior lounge areas
- DJ booth with upgraded audio visual & surround sound package throughout the interior & exterior decks
- Massive Navcom package far surpasses the standard owners allowance offered by the shipyard
- Increased ceiling heights throughout the interior of the vessel. Each deck height has been maximized and makes a substantial difference.
- Master cabin has been increased in size with enlarge en-suite & massive shower
- Upgraded galley as designed by a top Michelin starred French chef
- Timeless yet elegant & fresh Art Deco inspired interior decor by Stefano & Giorgio at Studio Vafiadis
- Underwater lights increased to a total of 14 with 2 designated for the bulbous bow
- Davit/crane capacity increased
- Upgraded IMO Tier III engine package
- Smart toilets throughout the interior of the vessel
- Expansive gym area with increased volume and storage features, custom hammock and wellness area
- Stabilizers upgraded from specified CMC fins to Naiad fin stabilizers

BAGLIETTO T52 HULL #04

STUDIO VAFIADIS - DESIGN INSIGHT

In an age dominated by trends & social media dogmas this custom Baglietto T52 stands out from the crowd.

The interiors are inspired by the most genuine and timeless values having a flair from the American Art Deco and architecture heritage of British craftsmanship of luxury & design. Materials onboard are truly remarkable. During the design process, together with the owner, we selected the most precious stones, marbles, exotic woods, fine Italian leathers, and fabrics from the most ancient & established Italian & international brands.

Onyx on the walls, teak on the flooring with streaks give a flair of nautical 'Riva' inspired style while Tanganica wood together with Zyricote wood create a timeless yet very fresh touch of the interior. Functionality and comfort were taken into consideration during the design phase having all the furniture well proportioned and sized for American standards. Furthermore all the materials and finishes have been conceived with maximum resistance & durability in mind in order to have the freedom while cruising even with wet swimming suits inside.

The furniture pieces of this yacht have been custom designed by Studio Vafiadis, a well known Italian design firm taking inspiration from the most authentic American & British architecture, furniture and art. Multiple layers of metal stainless steel linings make the interior perception of luxury even more tangible.

Spaces inside the vessel are wide & generous giving the perception of a much larger yacht.

The lower deck host 4 very spacious cabins with ggenerous en-suite bathrooms with seperate shower and toilet.

The main deck has a wide salon with dining and a well proportioned master cabin (which was increased in size by the owner when compared to other T52 designs) with a spectacular master bathroom adorned with the best marbles & woods and gigantic shower.

The upper deck has a very generous salon with cinema TV plus a nanny cabin, very comfortable addition that can be considered a 6th cabin onboard for guests and charter.

All of the decks have guest toilets (powder rooms) to ensure maximum livability. We also find onboard multiple bars with wide storage systems and precious decorations.

Exterior decks are as luxurious as the interiors with an up-and-down pool on the main deck with two stunning sunbeds on the swimming platform complimented by 2 equally impressive L-shaped sofas located aft of the main salon. The upper deck has an outdoor dining space together with a cocktail area, lounge area with sofas and gas grill to enjoy a convivial meal with guests.

The skydeck is adorned by an incredible pool forward with a wide sunpad aft. In the central part of the deck which has unparalleled size when compared to competitors yachts we find a DJ console station, a bar with American crafted stools, and central fire pit surrouned by a variety of seating areas fantastic for entertaining.

BAGLIETTO T52 HULL #04

OWNER DESIGN BRIEF

The goal was an interior that was modern and fresh, but very luxurious and done in a style that won't go out of fashion. Much like a five star classic luxury hotel.

Staterooms are designed for comfort and for giving the most living space to guests.

The galley was designed by a top French chef and modeled after multiple Michelin restaurants he has operated. For example a blast chiller can be used for instantly chilling champagne or white wine or making fabulous deserts with frozen chocolate.

The outdoor areas were designed with the goal of entertaining large parties which is why the sundeck bar can serve both the jacuzzi and bar stools. Its why we have a DJ booth and commercial icemaker.

Charter was considered in every decision. We chose materials easy to clean and that are robust in colors that don't easily blemish.

The garage was designed for a full suite of yacht toys for charter.

The fitness room is extra spacious and was designed with a fold down wall for yoga or Pilates as well as a custom hammock with carbon fiber poles so one can nap over the water. It can also convert into a massage room.

All ceiling heights were maximized and increased over the standard T52.

BAGLIETTO T52



BAGLIETTO T52



BAGLIETTO T52



BAGLIETTO T52



BAGLIETTO T52



BAGLIETTO T52



BAGLIETTO T52



BAGLIETTO T52



BAGLIETTO T52



BAGLIETTO T52



BAGLIETTO T52



BAGLIETTO T52



BAGLIETTO T52



BAGLIETTO T52



BAGLIETTO T52



BAGLIETTO T52



BAGLIETTO T52



BAGLIETTO T52



BAGLIETTO T52



BAGLIETTO T52



BAGLIETTO T52



BAGLIETTO T52



BAGLIETTO T52



BAGLIETTO T52



BAGLIETTO T52



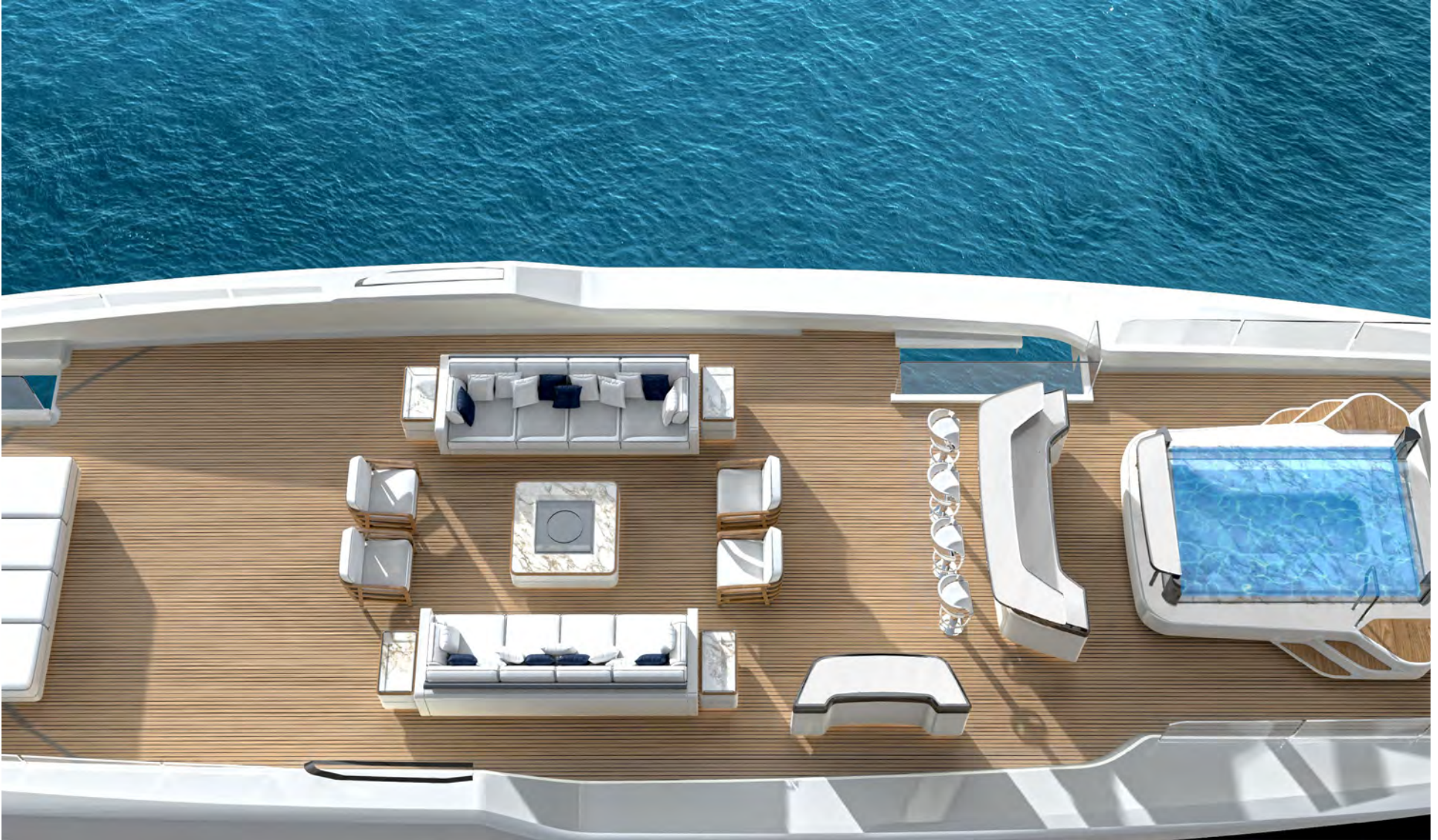
BAGLIETTO T52



BAGLIETTO T52



BAGLIETTO T52



BAGLIETTO T52

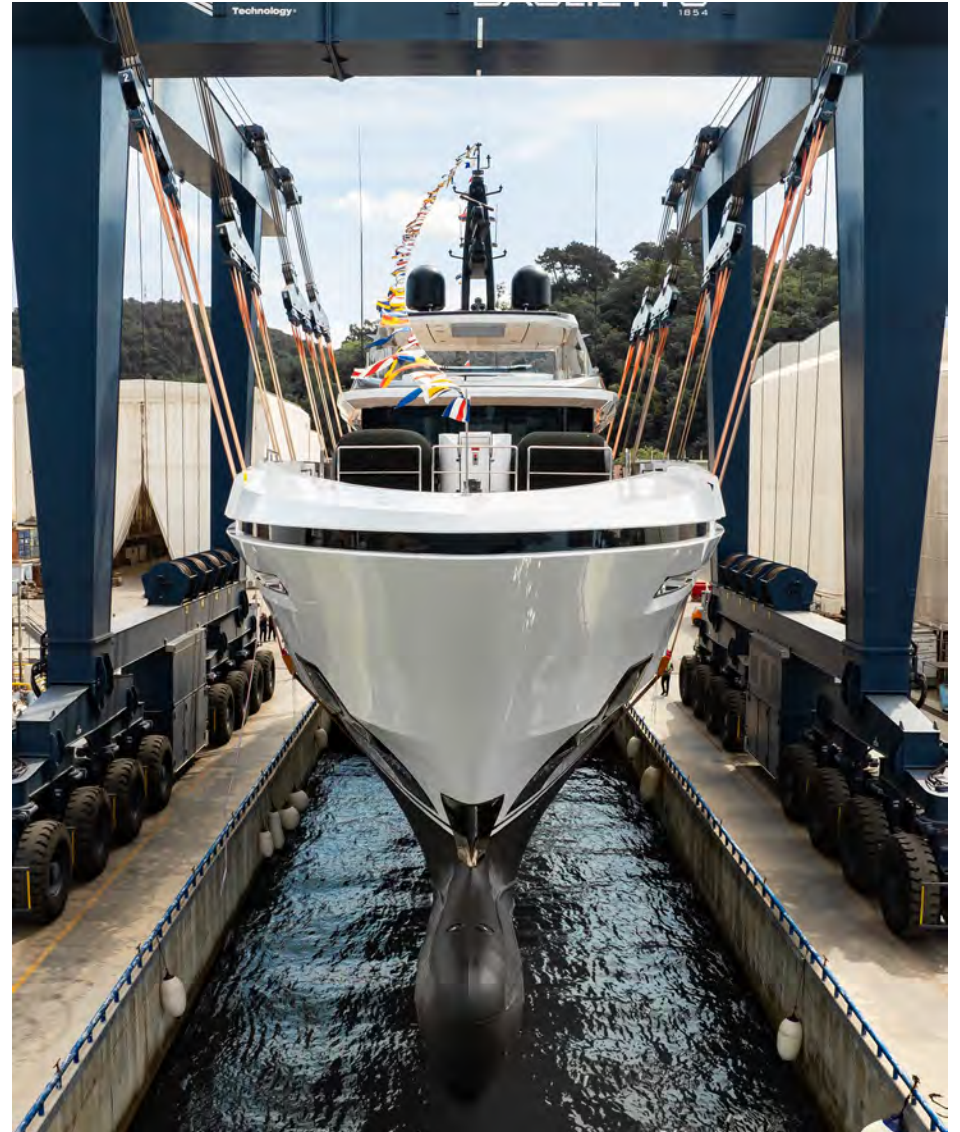


BAGLIETTO T52



Launch & Christening - 15 June 2024

BAGLIETTO T52



Launch & Christening - 15 June 2024

BAGLIETTO T52



Launch & Christening - 15 June 2024

BAGLIETTO T52



Launch & Christening - 15 June 2024

BAGLIETTO T52



Launch & Christening - 15 June 2024

BAGLIETTO T52



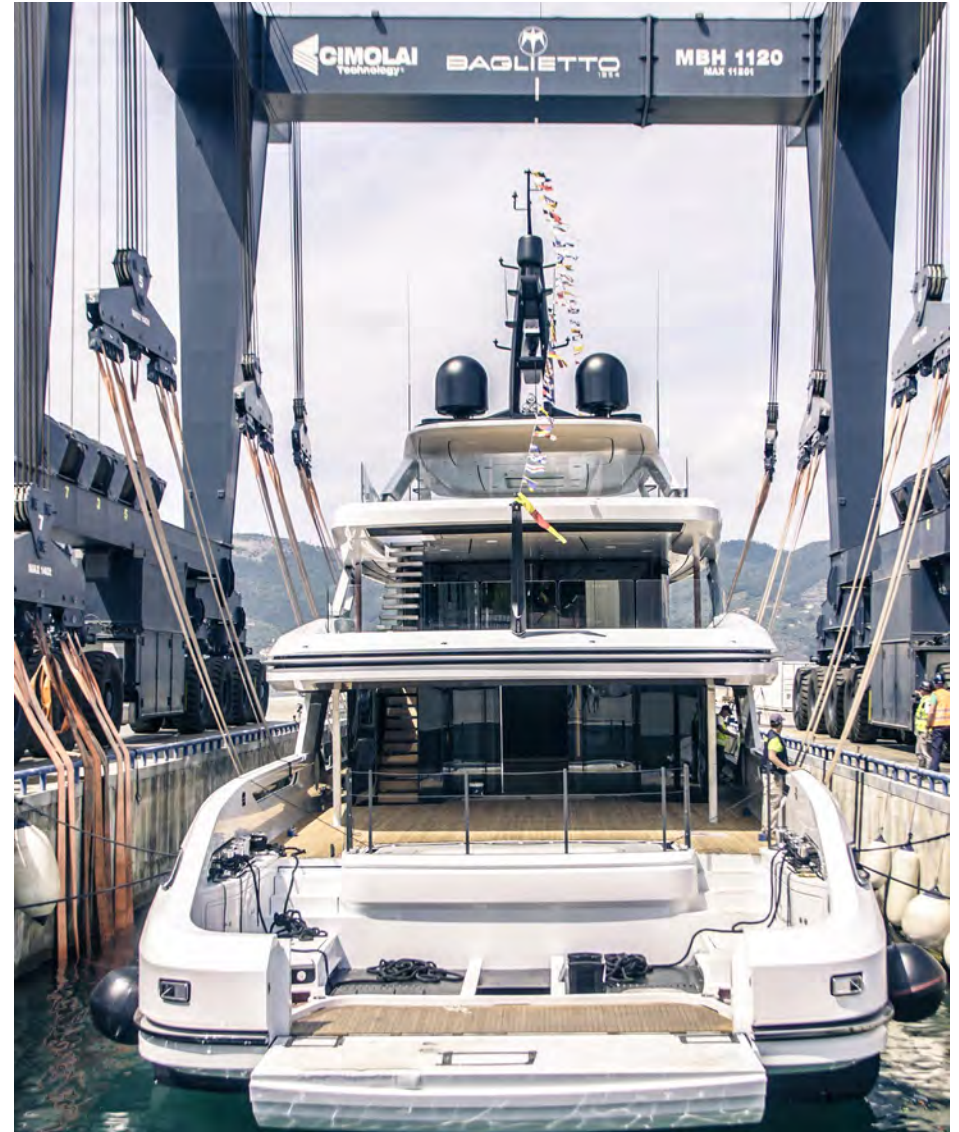
Launch & Christening - 15 June 2024

BAGLIETTO T52



Launch & Christening - 15 June 2024

BAGLIETTO T52



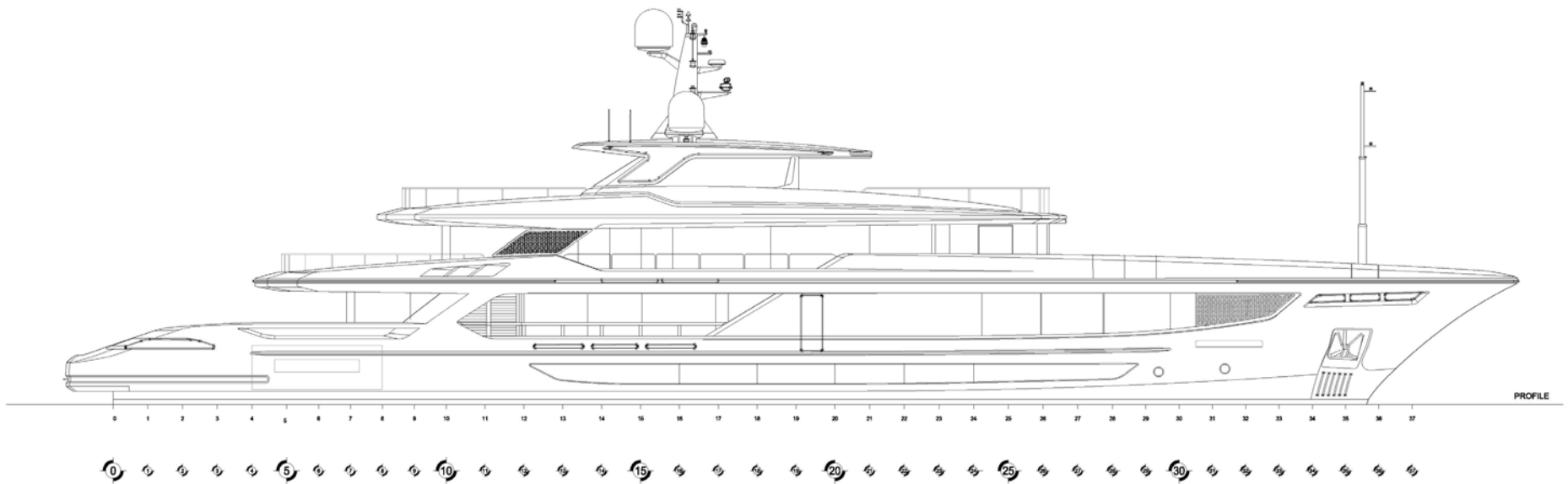
Launch & Christening - 15 June 2024

BAGLIETTO T52

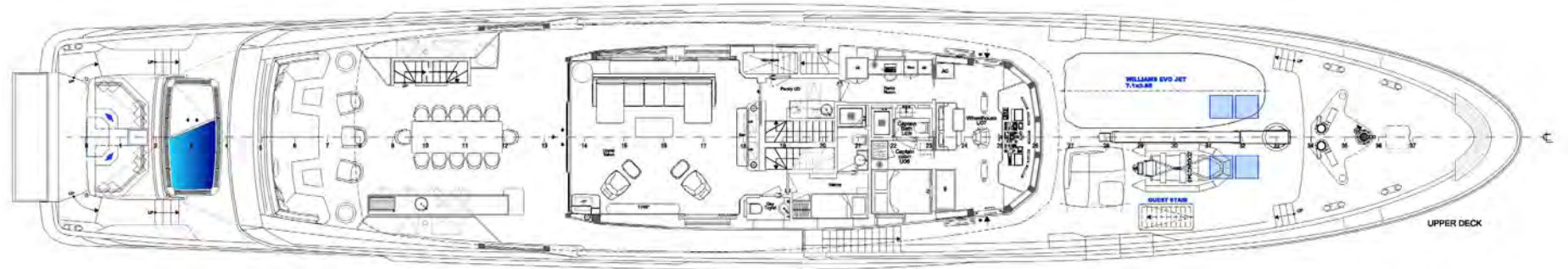
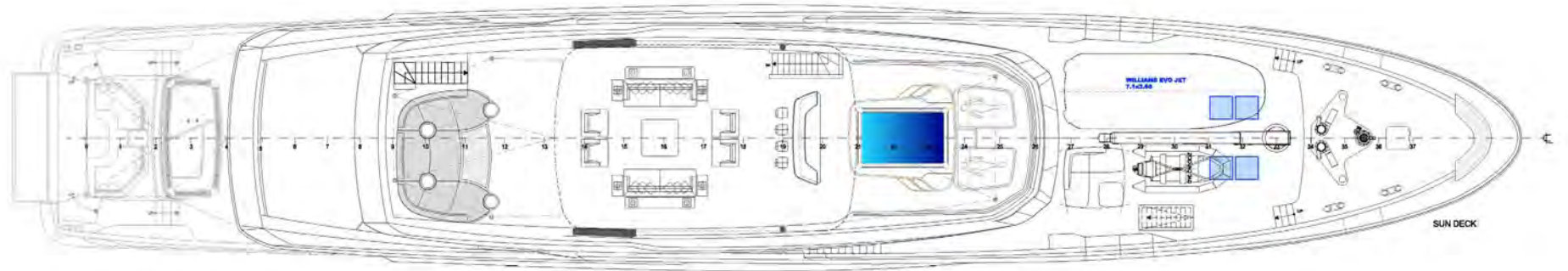


Launch & Christening - 15 June 2024

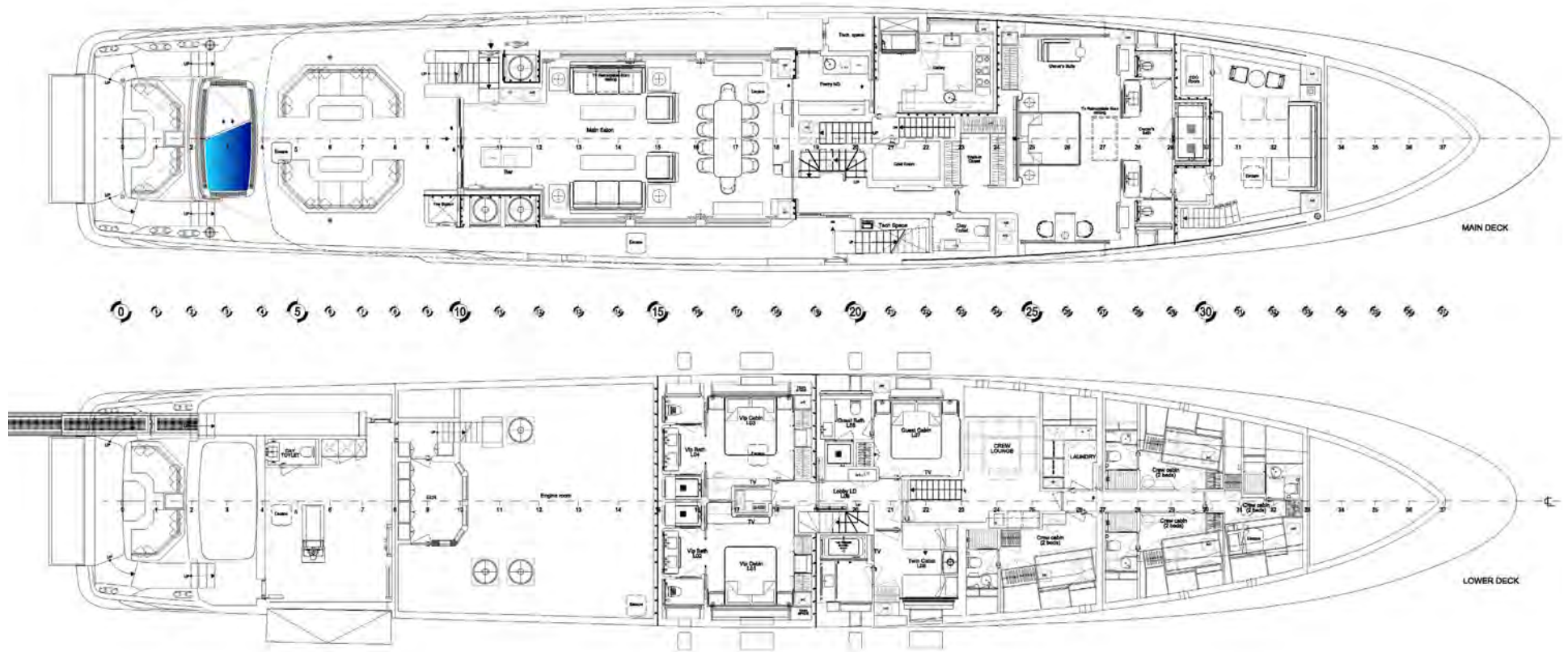
BAGLIETTO T52



BAGLIETTO T52



BAGLIETTO T52



BAGLIETTO T52

170' BAGLIETTO | 2024
