

BAGLIETTO T52

170' BAGLIETTO | 2024

ASKING PRICE: €36,850,000



BAGLIETTO T52 HULL #04

Asking Price
EUR 36,850,000

Year / Built
2024 Baglietto

Hull Configuration
Full Displacement

Length
170 ft/52 m

Beam Over All
31 ft/9.50 m

Draft at Full Load
8.8 ft/2.70 m

Gross Tonnage
497

Cruising Speed
11 knots

Max Speed
16 knots

Range at Cruise Speed
4,500 nm

Flag
Italy

Location
La Spezia, Italy

Classification
+100A1 SSC Yacht Mono G6 LMC

Exterior Designer
Francesco Paszkowski Design

Interior Designer
Studio Vafiadis

Construction
Hull - Steel / Superstructure - Aluminum / Deck - Teak over Aluminum

Naval Architect
Baglietto

Emission Regulation
EPA Tier III

Guests
12

Cabins
6

Heads
9

Crew
9/10

Engines
2x CAT C32 1,470 hp @ 2,300 rpm

Fuel Capacity
18,494 gallons/70,000 liters

Water Capacity
3,963 gallons/15,000 liters

Generators
2x CAT 7.1, 118 ekW

Black Water Capacity
914 gallons/3,460 liters

Grey Water Capacity
1,400 gallons/5,300 liters

BAGLIETTO T52 HULL #04

Propellers Outward rotating, 5 blades - 1,500 mm diameter (approx.) in Nibral; fixed pitch		Bow Thruster 1x Transversal propeller, electric motor driven 110 kW; 2 fixed pitch counter rotating		
Steering System 2x Hydraulic pistons with twin pumps power pack		Rudders 2x Semi-balanced spade rudders	Gearbox ZF 3000	
Shore Converter 100 kVA/80 kWe	Water Lubricated Shafts Aquamet 17, d=130mm	Fresh Water Maker 1x Duplex MC9 IDROMAR, Stainless Steel - 3,698 gallons/14,000 liters a day		
Sanitary Treatment Tecma Toilet System/Smart Toilets	Grey/Black Water System SELMAR or equivalent	Fuel Purifier GEA Westfalia - 369 gallons/1,400 liters an hour		
Anchor Winch Open Sistemi; 16m/min, drum d=170 mm	Capstans Open Sistemi; 15m/min, drum d=170 mm	Anchor 2x HHP balanced 360 kg each (approx.)	Anchor Chain 2x 150 m, U2 grade, 1900 stud link chain	
Gangway Custom electrohydraulic		Lube Oil Tank 211 gallons/800 liters	Sludge 211 gallons/800 liters	Bilge 264 gallons/1000 liters
Stabilizer 1x Pair of stabilizing fins under way and at anchor and wing profiles				

BAGLIETTO T52 HULL #04

NAVCOM PACKAGE - NAVIGATION SYSTEM

Chart Radar Furuno X-Band 12 kW

- (1) Furuno Chart Radar FAR-3210bb 12 kW black box (Processor EC, keyboard control, antenna gear box, installation kit)
- (1) Furuno Antenna Radiator ASS. XN12AF, 6.5 ft
- (1) Furuno Antenna cable RW-00135, 50 meters

ECDIS Furuno Fmd 3200 BB

- (1) Furuno Ecdis Fmd 3200 black box (Processor EC 3000, keyboard control, installation kit)

Furuno Network Device

- (1) Hub 3000
- (1) Ethernet Hub 100 for Interswitch
- Sensor adapter MC-3000S
- Sensor adapter MC-3010A

Nav Computer for Private Charts

- (1) Navigation computer solid state disk
- (1) Max Sea Time Zero Professional (navigation software)

Wheelhouse Monitors/Trackball

- (6) Display Furuno by Hatteland 27" wide screen
- (6) Display bracket kit
- (2) NSI trackball

Extron Video Matrix System IP Version

- (1) Extron Matrix HD 8x8
- (1) Extron HDMI DVI-D controller kit
- (1) Extron USB controller kit

Rack Allowance

Eaton Active UPS for Chart Radar - ECDIS

- (2) Eaton Active Marine UPS 1.5 kW

Bridge Navigation Watch Alarm System

- (1) Furuno BR500 main panel and processor
- (1) Timer reset panel
- (1) Motion sensor
- (2) Waterproof Reset panel wing station (port & starboard)
- (4) Remote alarm panel (captain cabin, crew mess, first officer, ECR)

Furuno DGPS #1

- (1) Furuno GP 170 differential GPS
- (1) GP 170 5.7" color LCD
- (1) Differential antenna GPA 020S
- (1) Shakespeare 4" high 1"-14 thread SS mount
- (1) Furuno PR241 220/24
- (1) Actisense NMEA Buffer

Furuno AIS FA-170

- (1) Standalone AIS transponder with LCD display
- Display 4.5" LCD monochrome (60x95mm), 120x64 pixel
- GPS receiver with 12 channel parallel
- Transponder unit 12-24 VDC: 7-3.5 A
- (1) Furuno PR241 220/24
- (1) Shakespeare 4" high 1"-14 thread SS mount
- (1) Sailor/AC Marine CX4 1.26m VHF antenna
- (1) Procom 1" deck-mounting flange antenna mount

BAGLIETTO T52 HULL #04

NAVCOM PACKAGE - NAVIGATION SYSTEM

Gyrocompass Navigat 200

- (1) Sperry Marine NAVIGAT 299 GyroCompass system mod. 10 24 VDC
- (1) Master Compass NAVIGAT
- (1) Gyro container
- (1) Remote display control
- (1) Actisense NMEA buffer

Gyrocompass Repeater

- (1) Sperry Marine Magnetic Console Repeater compass 192x192mm, location- wheelhouse
- Sperry Marine Universal Digital Repeater 96x96mm (with built-in dimmer and bulkhead mounting)
- (1) Sperry Marine Terminal box for universal digital repeater, location- steering gear room

Magnetic Compass

- (1) Sperry Marine Magnetic Compass JUPITER with 180mm card system (for overhead mounting, W/D correction, with fluxgate
- Sperry Marine Dimmer for overhead magnetic compass console mount

Navipilot 4500

- (1) Sperry Marine NAVIPILOT 4500
- (1) Control and display unit for console
- (1) Dongle for NaviPilot 4500
- (1) Steering control unit
- (1) Sperry Marine DC Bang-Bang solenoid valve control board
- (1) Sperry Marine Feedback w/2 potentiometers & (2) set limits switches +/-45
- (1) Sperry Marine Lever linkage for rudder angles up to +/-70°

Furuno Echosounder

- (1) Furuno FE-800 type approved echosounder
- (1) Matching bos MC502
- (1) Matching box MB504

Furuno DS 85 Doppler Speedlog

- (1) Furuno doppler speedlog
- (1) Display unit DS 8599
- (1) Transceiver unit

Transducers

- (1) Furuno 50 khz 1 kW echosounder transducer (required custom tank)
- (1) Furuno 200 khz 1 kW echosounder transducer (require custom tank)
- (1) Furuno speed log transducer 20 m cable
- (1) Furuno speed log transducer tank
- (1) Airmar DT800 Depth Sensor Plastic Flanged, backup active sensor (require custom tank)

Wind System

- (3) Furuno RD33, location- bridge, port & starboard wings
- (1) Airmar WX 220 weather station (wind, barometer, air temp)
- (4) Actisense NGW
- (1) Actisense NBF
- (1) Alfatronix 24VDC to 12VDC PowerVerter 12A
- (1) Shakespeare 4" high 1"-14 thread SS mount

BAGLIETTO T52 HULL #04

NAVCOM PACKAGE - NAVIGATION SYSTEM

GMDSS Communication Package A3 VHF Class A Bridge

- (1) Sailor 7222 VHF w/DSC Class A
- (1) Transceiver unit
- (1) Handset with cradle
- (2) Sailor 6204 control speaker microphone with cradle, location- port & starboard wings
- (4) Sailor 6208 control unit connection box
- (1) Sailor/AC Marine CX4 1.26m VHF antenna
- (2) Procom 1" deck-mounting flange antenna mount

VHF Class A Radio Area

- (1) Sailor 7222 VHF w/DSC Class A
- (1) Transceiver unit
- (1) Handset with cradle
- (1) Sailor 6204 control speaker microphone with cradle, location- bridge
- (2) Sailor N163S 110/220 VAC to 24VDC power supply
- (2) Sailor/AC Marine CX4 1.26m VHF antenna
- (2) Procom 1" deck-mounting flange antenna mount

VHF Class D Crew Mess

- (1) Sailor 6248 VHF
- (1) Transceiver unit
- (1) Hand microphone
- (1) Sailor 6204 control speaker microphone with cradle, location - tender garage
- (2) Sailor 6208 control unit connection box
- (1) Sailor/AC Marine CX4 1.26m VHF antenna
- (1) Procom 1" deck-mounting flange antenna mount

MF/HF SSB System

- (1) Sailor 6310 MF/HF 150W DSC Class A basic system
- (1) Control unit DSC Class A
- (1) 6m 12 POL CAN cable
- (1) MF/HF 150W transceiver unit DSC Class A
- (1) Antenna tuning unit
- (1) Sailor 6080 300W/28V AC-DC power supply
- (2) Banten 700 auto SSB-HF 800W 7.0m self supporting
- (1) Banten Rx module

Navtex

- (1) Furuno Navtex NX 700
- (1) Navtex receiver
- (1) Control panel
- (1) PR-241 power supply
- (1) Shakespeare 4" high 1"-14 thread SS mount

Standard C Inmarsat

- (1) Sailor 6110 Mini-C GMDSS System
- (1) Mini-C GMDSS transceiver
- (1) Message terminal distress
- (1) Sailor N163S 110/220 VAC to 24VDC power supply
- (1) Sailor H1252B/TT-3608A parallel printer black/grey
- (1) Sailor 6101 alarm panel Mini-C GMDSS
- (3) Sailor 6197 EDS-205 Moxa Switch 5-port

BAGLIETTO T52 HULL #04

NAVCOM PACKAGE - NAVIGATION SYSTEM

SSAS - LRIT

- (1) Sailor TT-6120 SSAS ship security alert system/LRIT
- (1) Antenna/transceiver unit
- (2) Alert button, location- ECR, bridge
- (1) Sailor alert button, location- captain cabin
- (1) Sailor N163S 110/220 VAC to 24VDC power supply

GMDSS Portable VHF

- (3) Sailor SP3520 GMDSS portable VHF

Fire Fighter

- (2) Sailor fire fighter portable UHF

EPIRB

- (1) Sailor SGE406-II satellite EPIRB with GPS and aut. release bracket

SART

- (2) Sailor SART AIS search and rescue transponder

SATCOM Package - Fleet Broadband Iridium Certus

- (1) Sailor 4300 fleet broadband- rackmount
- (1) FBB 4300 antenna unit
- (1) Fleet terminal in 19" rack
- (1) Sailor IP handset
- (1) Sailor power supply

Cable Package

- (1) LMR 400 Coax wire halogen free cable kit
- (1) Sailor NMEA 2k Mini custom wire cable kit for Mini-C
- (1) Maretron Network cable for NMEA 2000

Installation Package

- (1) Navcom installation equipment (connectors, local wires, etc.)

Navcom Engineering- one line diagram, wiring diagram, transducer position, antenna mast plan, under console arrangement, US built document.

Supervising Installation includes supporting the yard for equipment positioning, connecting, local wiring under console activity, pro-commissioning, dock commissioning.

Seatrial included (up to three seatrial) testing all Navcom equipment at sea.

Option 2: Furuno application for Sperry autopilot (for each unit). Software upgrade to active compability between Furuno ECDIS and pilot Sperry.

Furniture of an overhead band in wheelhouse.

BAGLIETTO T52 HULL #04

FINS STABILIZERS

NAIAD fin stabilizer model E600 (upgraded from CMC) with all the necessary modification to complete work including design, steel modification, repaint where necessary.

UNDERWATER LIGHTS

Supply installation and connection of (6) additional underwater lights on the side plus (2) on the bulb to be added to the (8) included in the specification.

- Increase of (8) underwater lights RGB
- Change of existing lights for RGB

CRANES

Increase of the crane SWL from 2200 kg to 2500 kg - man riding, including design, engineering, structural check of the deck strength and small structural adjustments.

ELECTRICAL SYSTEM

Furniture and installation of 110V 60 hz plugs and converter including electrical switchboard for the distribution, cable and cabling for about 36 sockets, design drawing programming and commissioning.

Both US & European outlets have been added throughout the interior of the vessel to cater to guests in both primary charter areas in the world making it truly international in her easy of access to electronics or plug-ins. Zones included guest accommodations, master cabin, wheelhouse & crew areas, upper & main salons, gymnasium, and galley.

BAGLIETTO T52 HULL #04

MARBLE & ONYX PACKAGE - UPGRADE

The owner has more than tripled the original allowance offered by the shipyard for custom marble and onyx found throughout the interior of the vessel. The interior marble throughout the vessel has been upgraded with Calacata Macchia Vecchia. A classic Italian marble, sourced in quarries that are part of Italy's grandest cultural heritage. Soft, velvety grey bolts and veins sweep across a ground of fresh cream and mellow ochre. The resulting slab is nothing short of majestic, a marble that exemplifies the glorious power or exquisite natural stone.

Supply and installation of onyx backlighted panel as per architectural project including marble, template, lighting system and installation on main deck dining area and onyx transparent supported doors in the main deck and upper deck saloon bar.

CREW ENTRANCE DOOR KEY PAD - UPGRADE

Furniture and installation of a safety keypad in the crew entrance door, corridor port side. This is for both privacy and security increasing safety onboard the vessel.

CARBON POLES FOR HAMMOCK

Furniture and installation of socket for carbon fiber poles include the furniture of two poles to hold hammock.

SMART TOILETS

Supply and installation of USPA 7035 RU seat cover for the guest, VIP, owner cabin, nanny and day toilet for a total of 9 toilets.

The owner has opted to replace all standard issue toilets with smart toilets.

BAGLIETTO T52 HULL #04

GALLEY & APPLIANCES

Sundeck

- Vitrifrigo ice maker at bar
- Frigoboat Veco fridge undertop at bar
- Ugolini Milano frozen yogurt machine at bar

Upper Deck

- Steel Line swing top gas BBQ at exterior bar
- Vitrifrigo ice maker at exterior bar and pantry
- Frigoboat Veco fridge undertop at exterior bar and salon
- Winterhalter dishwasher at pantry

Main Deck

- Vitrifrigo ice maker at salon entrance and pantry
- Frigoboat Veco fridge undertop at salon entrance and pantry
- Miele microwave at pantry and galley
- Irinox Home blast chiller at pantry
- Winterhalter dishwasher at pantry and galley
- Liebherr wine cooler undertop at pantry
- Holity heating lamp at galley
- Rational iCombi Pro oven hood at galley
- Miele fridge undertop at galley
- (2) MBM induction cook top at galley
- Frigoboat Veco mini fridge undertop at owner's cabin

Lower Deck

- Frigoboat Veco fridge undertop at gym and crew dinette
- Miele microwave at crew dinette
- Miele dishwasher at crew dinette
- Miele fridge at crew dinette
- (2) Miele washer at laundry area
- (2) Miele dryer at laundry area

BAGLIETTO T52 HULL #04

DECORATIVE LIGHTS

Furniture and installation of decorative lights.

- (4) Ralph Lauren double sconce in VIP cabin
- (2) Ralph Lauren double sconce in guest cabin
- Baccarat Mille Nuits in owner cabin
- (4) Ralph Lauren Allen double sconce in main deck saloon
- (2) Ralph Lauren Booking large in main deck saloon
- Ralph Lauren single sconce in main deck head
- (6) Ralph Lauren Allen double sconce in upper deck saloon
- (1) Ralph Lauren Brooking large in twin cabin

BAGLIETTO T52 HULL #04

AV SYSTEM

Delta cost for the upgrade on the AV system discussed and approved from owner team as per new specification:

- Standard systems
- Domotic control of curtains, lights and AC
- Predisposition for Starlink connection
- TVS
- Indoor TV ceiling lift in main deck saloon
- DJ plugs in sun deck
- iPad on crew cabins
- Internet connection upgrade
- Removing TVRO (TV 1upply1nc connection)
- Cables predisposition for TVRO (double antennas) only cable for TV satellite connection including installation
- Upper deck saloon TV mechanism
- CCTV system (1upply1nc/lpro) excluding mast camera
- Doorbell
- UD HDMI plug
- Empty dome supply
- Removing Plex
- Cabling (increasing from standard system)
- Cable/cabling and mechanical installation of a owner 1upply mast camera
- Contractural allowance

System at a Glance

These are the main features of the entertainment and network system.

- Centralized (2) RACKs 40-42RU housing all the entertainment system
- Dolby Surround Audio with (5) speakers plus (1) subwoofer in main saloon
- Crestron control processor
- ITWmodeX client for iOS and Android (BYOD or cabin's iPad)
- Audio party more for public areas
- Wireless coverage (WiFi 6) for luxury areas
- Full Cisco Network system
- POE equipment where available

Sun Deck Aft

- (2) Marine speakers
- (1) Marine subwoofer
- Same audio as central area

Sun Deck Central Area

- (6) Marine speakers
- (1) Marine subwoofer
- (1) Mini iPad for AV control
- Removable Projector + ceiling recessed electric screen system

Sun Deck Forward

- (2) Marine speakers
- (1) Marine subwoofer
- Same audio as central area

BAGLIETTO T52 HULL #04

AV SYSTEM

Upper Deck External Aft

- (6) Marine speakers
- Same audio as upper salon
- VOL. CTRL keypad predisposition

Captain Cabin

- (2) Speakers
- (1) TV 50"
- (1) Mini iPad for AV control

Wheelhouse

- (2) Speakers
- (1) Compact stereo with Bluetooth
- Original device controller

External Forward

- (4) Marine speakers
- (2) Speaker plugs (XLR out + 230V)
- VOL. CTRL keypad cables predisposition

Upper Salon

- (4) Speakers
- (1) TV 85" + HDMI plug
- (1) Mini iPad for control

Nanny Cabin

- (2) Speakers
- (1) TV 32"
- (1) Mini iPad for AV control

Main Deck Salon

- (5) Speakers
- (1) Subwoofer
- (1) TV 65" + ceiling hinge
- (1) Mini iPad for Av control

Galley

- (2) Speakers
- (1) Compact stereo with Bluetooth
- Original device controller

Owner Cabin

- (4) Speakers
- (1) Subwoofer
- (1) TV 65"
- (1) Mini iPad for AV control

BAGLIETTO T52 HULL #04

AV SYSTEM

Main External Aft

- (6) Marine speakers
- (2) Speaker plugs (XLR out + 230V)
- (1) Mini iPad for audio control

Owner Dressing

- (2) Speakers
- VOL. CTRL keypad cables predisposition
- Same audio as owner cabin

Owner Bathroom

- (2) Speakers
- VOL. CTRL keypad cables predisposition
- Same audio as owner cabin

Lower Deck ECR

- (2) Speakers
- (1) Compact stereo with Bluetooth
- Original device controller

Guest Cabin

- (2) Speakers
- (1) TV 50"
- (1) Mini iPad for AV control

Crew Lounge

- (2) Speakers
- (1) TV 55"
- (1) Mini iPad for AV control

VIP Cabin (x2)

- (2) Speakers
- (1) TV 50"
- (1) Mini iPad for AV control

Twin Cabin

- (2) Speakers
- (1) TV 32"
- (1) Mini iPad for AV control

Crew Cabins (x4)

- (2) iPad + in wall charging dock

Party Mode

Party mode means all the public areas sound the same music, typical feature to use during a party. List of the areas where party mode is enabled:

- Sun deck
- Upper deck external forward
- Upper deck dining
- Upper deck external aft
- Main deck salon
- Main deck external aft

These areas will always have the possibility of witching on-off the audio and adjust the volume independently.

BAGLIETTO T52 HULL #04

AV SYSTEM

Sonos System

Sonos offers an additional source for streaming music, podcasts, audiobooks, and internet radio via the Sonos App or directly from the user's Apple devices using the Apple AirPlay 2 feature present on the Sonos devices. With the new AirPlay 2, videos, photos, music and more can be shared from Apple devices to the entertainment system on the area of interest, using the wireless network with no need to a physical cable connection.

Sonos works with services like Apple Music, Spotify, Amazon Music, Audible, Tidal, Deezer, Pandora, TuneIn, iHeartRadio, Google Play Music, YouTube Music, and many more.

Control Through iPad

A dedicated Apple iPad Mini per area will be supplied to manage the entertainment system.

The iPad enables to control the AV & Domotic avoiding the use of personal devices or proprietary controllers.

AV System Control with Crestron

AV system control is based on Crestron 4 Series control processors. Multiple Crestron CPUs will be installed in the main racks to manage the AV devices control.

SAM2 Slim Audio Master

SAM is an absolute breakthrough in the audio amplifier segment. Digital audio matrix with special features which, unprecedented, offers advantages by opening up new opportunities in the configuration of onboard audio systems. With the new digital matrix at its heart, SAM allows a small rack to handle up to 16 speakers, taking up only a fraction of the space of a traditional audio rack and freeing up valuable onboard space. The joint result of a technological development carried out by the Italian company Leaff Engineering and the research and development division of Videoworks Group, SAM, is produced by Leaff and offered by Videoworks Group exclusively for the nautical sector.

SAM2 is the second generation of Slim Audio Master with below additional features, a new DANTE Matrix 32x32.

Comfort Control

AV system can be interfaced with third parties in order to control through iPad-curtains, lighting, air conditioning.

Loudspeakers for Internal Areas

Sonance VP Series combines elegant, modern style with outstanding audio performance. Independently pivoting tweeter allows speakers to be placed where they look the best while directing sound for best performance.

BAGLIETTO T52 HULL #04

AV SYSTEM

VP62R

- 1" (25mm) pivoting Tweeter
- 6 1/2" (165mm) pivoting woofer
- 5-watts minimum; 125-watts maximum
- 89dB SPL (2.83V/1 meter)

B&W ASW608

The Bowers & Wilkins ASW608 is proof that a huge subwoofer is needed to enjoy solid bass. At less than one cubic foot in volume, this compact powered sub is ideal for small to medium-sized rooms where light, responsive bass for music and movies is wanted.

ASW608

- 8" subwoofer
- 200-watt ICEpower amplifier

Loudspeakers for External Areas

JL Audio M6 Subwoofer Luxe Series

Subwoofers are built with rigged suspension systems and long excursion capabilities to deliver deep, controlled bass performance that enhances the best marine audio systems.

M6-8IB-L

- 8" subwoofer

JL Audio M6 Loudspeaker Luxe Series

M6 models are optimized for open-air boating environments, taking into account the materials around them and the environment that will be operating in. All materials, fasteners and assembly techniques are carefully engineered to ensure reliability and durability in marine applications, including saltwater exposure, tested to exceed industry standards for corrosion and UV resistance.

M6-650X-L

- 6 1/2" speaker
- 75Wrms output power
- 89.5dB SPL

Cisco Network

- Cisco Catalyst 9200L Switches
- Cisco Catalyst C1000 Switches
- Cisco Embedded Wireless Controller on Catalyst Access Points
- Cisco Catalyst 9100 Series Access Point

Internet Connection

Videoworks is able to provide the state-of-art technology present on the market. With cellular modems Peplink Videoworks can give the opportunity to connect the yacht with 5G connection. This project will be provided a dual modem in one single device with the possibility of having a redundant SIM in case of SIM failure or change of region. Changing the SIM is not always that easy, due to the difficult installation of modems near the antennas. For that Videoworks offer a SIM injector to simplify the SIM change activity.

BAGLIETTO T52 HULL #04

AV SYSTEM

Kerio Management

UPS System

Offers premium power outage protection and continuous power conditioning in a compact and flexible deployment system.

Flat Panel LEO Predisposition

Flat Panel LEO Antenna Predisposition

Flat Panel LEO Antenna Predisposition

Videoworks scope of supply is technical instructions in the building phase.

DJ Plug

External plugs will be foreseen in SD to connect a DJ console (not Videoworks supplied)

- 230VAC plug
- Audio IN STEREO plug
- ETHERNET LAN plug

iPad 10.9"+ in wall charging dock in crew cabins

Viveroo Free iPad Wall Mount

Internet Connection Upgrade (Part I: Antenna)

WaveHunter is a cross polarized, high gain, multi directional, 5G/LTE, 24x24 multi MIMO marine & coastal antenna array.

Radiation Platters - Multi-directional

Internet Connection Upgrade (Part II: Adding a Second Router)

Peplink Max HD4 MBX 5G (in addition to double SIM router) for a complete system working with up to 6 SIM concurrently. The Peplink Max MBX 5G is a very complete and powerful industrial router with 4 built-in 5G modems for 5G connections.

CCTV System

The CCTV system is based on world leader Panasonic products, due to reasons of quality and maintenance.

The proposed system consists of:

- (5) Full HD 1080p 60fps Compact Dome Camera ip66
- (1) PTZ Network Camera 2MP (1080p) 10x
- (1) PTZ Network Camera IR with heavy salt damage resistance 40x

View and management of the CCTV System can be performed:

- Through wheelhouse PC for CCTV visualization, provided the integration between Videoworks and the company providing the navigation system
- On crew mess Touch display 23" for CCTV visualization
- NVR (network video recorder) 6TB RAW - Digital recording system for network cameras. Multiformat H.265, H264 and JPEG, 16 ch

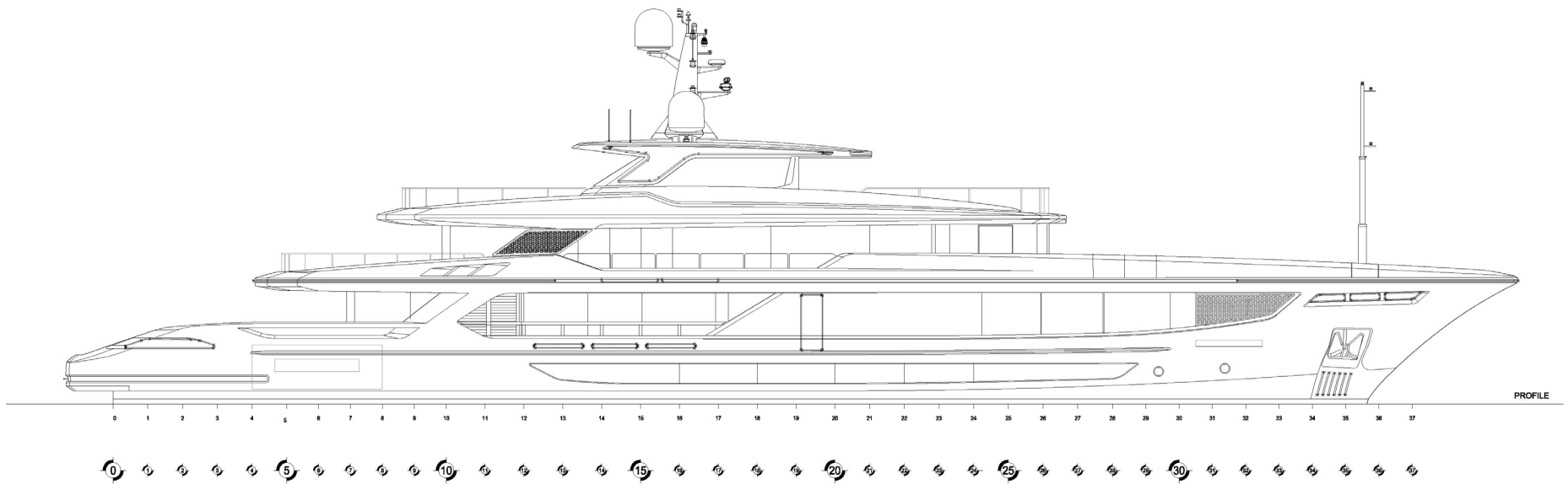
i-PRO WV-X6533LNS

- 2MP (1080p) 40x IR PTZ Network camera with heavy salt damage resistance

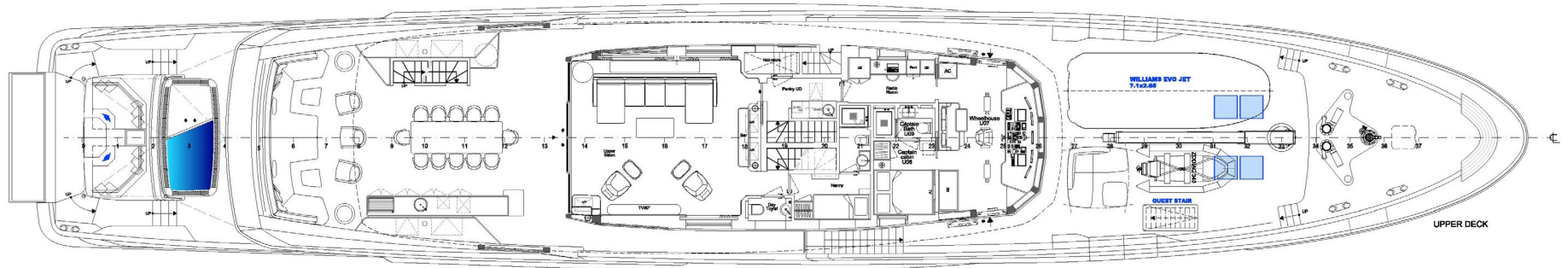
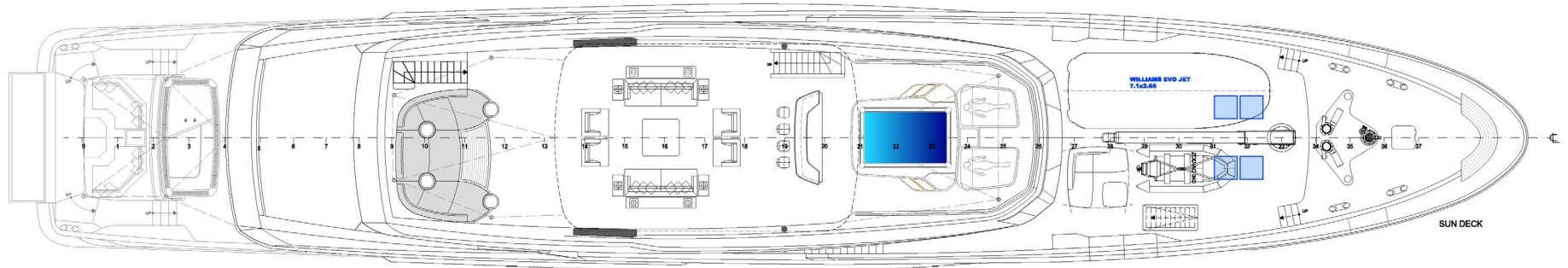
i-PRO WV-SUD638

- Anti-severe weather PTZ network outdoor camera with wiper and de-froster

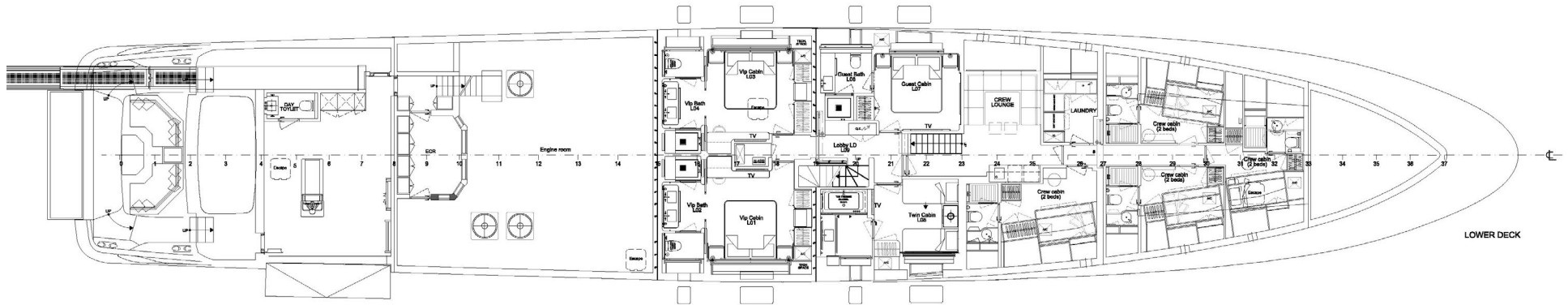
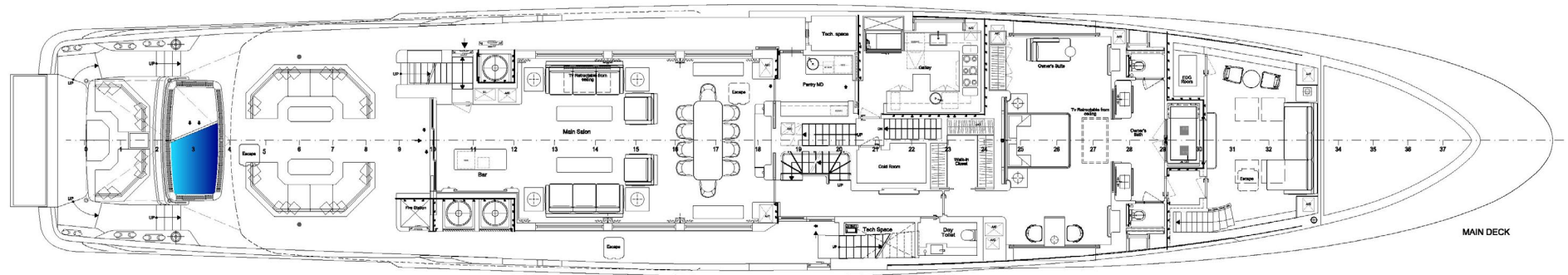
BAGLIETTO T52 HULL #04



BAGLIETTO T52 HULL #04



BAGLIETTO T52 HULL #04



BAGLIETTO T52

170' BAGLIETTO | 2024
