

UPTIGHT

106' CANTIERE DELLE MARCHE | 2022

ASKING PRICE: \$14,800,000



UPTIGHT

Asking Price
USD 14,800,000

Year / Built
2022 Cantiere delle Marche

Model
Darwin 106

Length
106 ft/32 m

Length at Waterline
91.8 ft/28 m

Beam, max
24.3 ft/7.43 m

Depth, amidship
13.1 ft/4.0 m

Draught, full load
9.4 ft/2.87 m

Gross Tonnage, approx.
255

Cruising Speed
11 knots

Max Speed
13 knots

Range at 10 Knots
4,500 nm

Displacement at Full Load, approx.
250 t

Location
Miami, Florida

Classification
RINA C HULL • Ych Short Range Navigation, LY3

Flag
Cayman Islands

Exterior Designer
Hydro Tec

Interior Designer
Francesco Guida Design

Hull Material
Steel (with reinforced polar belt)

Superstructure Material
Aluminum

Naval Architecture
Cantiere delle Marche/Hydro Tec

Guests
13

Staterooms
6

Heads
7

Crew
6

Crew Cabins
3

Crew Heads
3

Engines
2x Caterpillar C18 Acert 670 hp @ 1800-2100 RPM

Generators
2x Kohler 55 kW

Generator Hours, July 2024
Port 2738, Starboard 2703

Engine Hours, July 2024
Port 1145, Starboard 1143

Fuel Tank
12,681 gallons/48,000 liters

Fresh Water
1,585 gallons/6,000 liters

Grey Water
554 gallons/2,100 liters

Black Water
290 gallons/1,100 liters

NOT AVAILABLE FOR SALE TO U.S. RESIDENTS WHILE IN U.S. WATERS

Bilge
290 gallons/1,100 liters

Clean Oil
158 gallons/600 liters

Dirty Oil
158 gallons/600 liters

UPTIGHT

ABOUT

UPTIGHT, the 2022 Cantiere delle Marche Darwin 106, enters the market for the first time & represents the premier explorer yacht for sale in the world in this segment of the market. UPTIGHT is a custom Darwin 106 that is a modified version of the popular Darwin 102 with the addition of a cockpit back aft that not only is outfitted for world class fishing, but also serves as excellent access to the water, lounge area, additional storage and incorporates an extended lazarette area on the interior.

UPTIGHT comfortably sleeps 13 guests in 6 cabins including a private owners deck on the upper level with 5 additional guest cabins located on the lower deck including a substantial VIP that could be considered a secondary master cabin.

UPTIGHT has an open floor plan on the main deck with the main salon featuring a lounge area, formal dining and a galley that can either be isolated or opened up to the salon complete with bar counter great for entertaining. Substantial crew accommodations for 5 located forward on the main deck complete with crew mess.

Bridge deck has all the navigation equipment one would expect to find on a 50m vessel & features an office & sitting space great for crew or guests.

UPTIGHT features a full displacement steel hull complete with polar belt as she was constructed with the original intent of transiting the North West Passage. Trans-ocean range, additional refrigeration & freezer cold stores, commercial grade galley, redundant systems, spare parts, proper crew accommodation & navigation package make her a true global explorer which is turn key with the ability to depart on a global passage tomorrow.

KEY FEATURES

- Full displacement steel hull with reinforced polar belt
- Sleeps 13 guests in 6 cabins including private owners deck on the upper level and second master cabin located on the lower deck
- Impressive 4,500nm range
- Custoldi diesel jet tender included
- Open galley concept that can be enclosed when required
- True global explorer with custom cockpit complete with live bait wells, expansive freezer & refrigeration, and trans-ocean range
- The premier expedition yacht on the market today

UPTIGHT

OVERVIEW

UPTIGHT, the 2022 Cantiere delle Marche Darwin 106, enters the market for the first time & represents the premier explorer yacht for sale in the world in this segment of the market. UPTIGHT is a custom Darwin 106 that is a modified version of the popular Darwin 102 with the addition of a cockpit back aft that not only is outfitted for world class fishing, but also serves as excellent access to the water, lounge area, additional storage and incorporates an extended lazarette area on the interior.

UPTIGHT comfortably sleeps 13 guests in 6 cabins including a private owners deck on the upper level with 5 additional guest cabins located on the lower deck including a second master cabin great. Fantastic flexible layout great for both private or charter use.

UPTIGHT has an open floor plan on the main deck with the main salon featuring a lounge area, formal dining and a galley that can either be isolated or opened up to the salon complete with bar counter great for entertaining. Substantial crew accommodations for 6 located forward on the main deck complete with crew mess.

The fit & finish of the interior decor is worth noting. From the joinery work, the marriage of two different styles of wood found throughout the decor, custom stainless steel work, subtle touches like the custom leather headboards found in each cabin, the backlit feature wall that runs the length of the central staircase, the stone work in the galley, and the functionality of the layout. Storage is in abundance and not just dry storage, but cold storage (refrigeration & freezer) which allows for extensive provisioning so the owner can properly utilize the trans-ocean range of UPTIGHT. Every little detail was well thought out and purposely designed.

This attention to detail continues to the exterior with her Stars & Stripes blue hull, proper propane BBQ on the sundeck, gorgeous mosaic tiled jacuzzi, and my favorite feature the cockpit. Not only can UPTIGHT serve as a mother-ship for a global fishing fleet, but also a stand alone explorer. The cockpit has aft facing seating, live bait wells, cold storage for bait, and allows the guests & crew easy access to the water for watersports toys, docking and is the main place to gather when docked or at anchor. Custom sunshades are available for each deck assuring shade even on the sunniest days.

Bridge deck has all the navigation equipment one would expect to find on a 50m vessel & features an office & sitting space great for crew or guests.

UPTIGHT features a full displacement steel hull complete with polar belt as she was constructed with the original intent of transiting the North West Passage. Trans-ocean range, additional refrigeration & freezer cold stores, commercial grade galley, redundant systems, spare parts, proper crew accommodation & navigation package make her a true global explorer which is turn key with the ability to depart on a global passage tomorrow.

UPTIGHT

WALKTHROUGH

When you first approach UPTIGHT from the dock the first thing you notice is her substantial appearance of strength. Hydro Tec has done an outstanding job of making her profile lines proportionate and purposeful & the owners decision to go with the Stars & Stripes Blue hull color really does well with her appearance. She has a prominent purposeful bow which tapers down back aft to the cockpit.

As mentioned before UPTIGHT is the progression from the Darwin 102 that has developed into a Darwin 106. Yes, the owner built UPTIGHT with the intent of being a mothership for his fleet of custom sportfish to travel the world reaching remote fishing & cruising grounds. Now, yes the cockpit is fantastic for fishing with live bait wells, additional refrigeration & freezer space for bait, fish boxes BUT it is also a fantastic space that enables owners & guests easier access to the water along with seating & lounge areas. In my opinion it enhances the entire experience of being on the water.

Continuing into the lazarette area & machine/engine room spaces from the cockpit watertight door - the storage is endless and is utilized from everything from spare parts, fishing gear, watersports equipment, tools, etc - you can never have enough storage and UPTIGHT takes that term to the next level. Excellent use of space and the engine room layout easily allows access to all major machinery & bilges for seamless maintenance.

Regarding the hull & the ability of UPTIGHT, she features a full displacement steel hull with bulbous bow, has trans-Atlantic range and a polar belt was added for additional strength around the water line for when transiting polar regions as the owners origin intent was to complete the NorthWest Passage.

Stepping up from the cockpit to the main deck you can take stairs located either to port or starboard. The exterior main deck has a U-shaped sitting area with table and full walk arounds continue to both port & starboard all the way forward past mid-ship. Stepping forward from the aft deck you enter the main salon which is truly the gathering place onboard. I love the flow which starts with a welcoming area complete with bar area, then the sitting area complete with TV, formal dining and then my favorite part is the galley located forward to port. A privacy blind can be lowered or raised depending on the style and level of service and a bar sitting area compliments the space. Great for family style cooking and meals.

Continuing to starboard you enter the main foyer where you have 3 options, step down to the lower deck where you have the 5 guest cabins, continue forward to the crew area complete with 3 cabins & mess area, or head upstairs to the private owners deck & bridge. A gorgeous central staircase ties everything together with a built in temperature controlled wine-storage as a focal point in the foyer area.

Touching on the interior decor & design is important as they beautifully incorporate 3 different styles of wood with custom metal & glass work along with mirrors. It creates a zen like feeling that flows well between all the spaces. It is timeless and extremely well maintained.

UPTIGHT

WALKTHROUGH

Lower deck has 5 guest cabins. All the way forward is the second master cabin complete with expansive storage below accessible by lifting the stairs. This is great for provisioning for long passages, gives access to tanks, boilers, and machine spaces and can be utilized in many ways. The other 4 cabins all have en-suites and one has a pullman berth allowing UPTIGHT to sleep that 13th guest.

Forward on the main deck you have the crew area. There is a mess located to starboard, galley to port with direct access, and then up two stairs you reach the 3 crew cabins that are all en-suites and sleep 6.

The upper deck has a private owners level with king size berth facing aft, expansive closet space and large en-suite with his & her sinks, large shower and great views. Forward is the wheelhouse complete with forward raked windows, 5 massive glass panel monitors and all the navigation equipment one would expect to find on a 50m vessel. A built in sitting area can easily sit up to 4+ adults and can be used for relaxing & conversation when underway or function as the captain's office if needed.

As for the exterior of the second deck, back aft you have the davit, substantial Custoldi diesel jet tender that has been customized for beach landings and finished in a gray color so she looks brand new. Important to note you can syphon off the main diesel tanks with a quick fill station back aft which is why a diesel tender was chosen to avoid having to carry gasoline jerry cans onboard. Built in storage areas & lounge area compliment the space. Sun shades can also be put into place so when the tender is in the water the entire deck can be utilized for lounging or entertaining. Forward you have access to the bow area with your ground tackle and significant forepeak that has storage and your chain lockers.

Heading to the sundeck, one of my favorite spaces onboard you have the premier entertaining area. Jacuzzi is forward and surrounded by sunpads, full bar with proper propane BBQ, sitting area all covered by a hard top and mast that really compliments the entire yachts design showing strength and power.

UPTIGHT is a world class explorer yacht that shows in new condition. She has been meticulously maintained by a full time crew since new that have buffed & waxed the hull and superstructure every 2 months since new so the paint looks as great as the day she was launched. Teak is flawless, engine room shows the same and with just over 1,000hrs on the engines and 2,700hrs on her twin 55kw generators she has been lightly used. Cruising the Mediterranean, Caribbean & Bahamas UPTIGHT has been privately owned and never chartered.

UPTIGHT represents the best value on the market today.

UPTIGHT is commercially registered, Cayman flagged, NOT US DUTY PAID thus not for sale to US residents while in US waters.

UPTIGHT

FULL DETAILS

Hull

UPTIGHT has a round bilge hull, even keel, a good dead rise, transom stern with swimming platform, a flared bow, twin-screw and two skegs.

There are two watertight bulkheads and a collision bulkhead. The stability shall comply to the classification rules and shall have a good maneuverability in narrow space.

Structures

The hull is built in welded steel grade A. The superstructure is built in aluminum alloy grade 5083 to limit the displacement and lower the center of gravity increasing the yacht's stability. The aluminum superstructure is connected to the hull structure by mean of a bi-metallic joint. Structure's materials and scantlings are anyway in accordance with requirements of the rules.

Stability & Trim

The yacht was designed to have a suitable positive stability to operate safely, with all passengers on board however located, minimizing the effects of free surface in the fuel and fresh water's tanks.

An inclining test was performed by the shipyard before sea trials. The test's report was done and delivered to the Classification society for examination in accordance with the Large Yacht Code LY3. On the base of the test's results, the shipyard made a training manual including stability's calculation and the trimming of the vessel in the various probably loading conditions.

The builder can fit on board permanent ballasts in order to meet the applicable stability criteria and/or for trim correction. The permanent ballast shall not have any effects on the contractual performance of the vessel.

Helm Stations

Three helm stations are located on board. The main helm is on the bridge, the second and the third are on the wings beside the wheelhouse.

UPTIGHT

FULL DETAILS

Fresh Water Maker

There are (2) Idromar reverse osmosis water makers with a total combined daily nominal capacity of 7,200 liters/day (1,902 gallons/day).

Classification/Inspection & Certificates

The yacht was delivered with a RINA S.p.A. certificate with the following notation: C HULL • MACH Ych Short Range Navigation, Flag: Cayman Island

The following rules and regulations, including all amendments valid at the date of the vessel construction agreement comply with:

- International Tele Communication Convention, 1967
- International Convention of Preventing Collisions at Sea, 1972
- G.M.D.S.S. requirements
- The Large Comercial Yacht Code (LY3) LY3 Short Range

UPTIGHT

FULL DETAILS

All necessary certificates and documents supplied to the owner at the time of delivery of the yacht include:

- Classification Certificate issued by RINA
- Navigation's lights certificate
- Compass adjustment report
- Stability booklet
- Life-saving equipment certificate
- ITC certificate- the yacht is measured according to the International Convention of Tonnage Measurement of Yachts, London 1969
- MARPOL certificates - Annex IV International Sewage Pollution Prevention Certificate (ISSP)
- Load Line Certificate
- Anti-Fouling Declaration
- LY3 Statement of Compliance with only the following element exempted: Nautical Charts, Manning & Personnel Certification, Crew agreements, Safety management, MLC compliance (except that the vessel shall be in compliance with Section 21A of LY3), Safe Drills
- All the certificates issued by the Classification Society for machinery, equipment and material fitted on board (where requested by the Classification Society)
- Summary of sea trials

UPTIGHT

OPTIONS LIST

- 22 Under water lights (360 degrees around the hull)
- Transom passarelle Sanguinetti
- Main deck external ottomans for aft sofa
- Additional row of automatic stanchions for Sanguinetti pasarelle
- Navigation instruments
- UD External cabinet
- Wood finish
- Entertainment upgrade, Marantz Sintoampli
- Japanese WC seats
- Gate for UD rails for tender crane operations
- Internal decorative steel
- Wheelhouse lighting
- Steering wheel leather cover
- Entertainment/SAT Antennas & Communication system (excluding domotic)
- (4) Additional underwater lights
- External lights, additional circuits and lights
- Taps/Accessories
- Marbles OPT3, solid/lights
- Door handles
- Awnings
- Carbon fibers Marquipt
- Interior fabrics
- Flooring
- Household appliances
- Wine cellar
- FLIR camera
- Bauer compressor
- (2) Samsung frames TV upgrade
- Salon up/down window
- External TV Samsung Terrace
- Internal lights
- (2) Additional shore power plugs
- Up/down main deck table
- Shower doors
- Internal upholstery, crew mess sofa
- Custom galley hood
- Drawers for sun deck external furniture
- Lighting decorative panel upholstery, stairs main deck/upper deck
- Indoor freestandings
- Decorative lamps
- External covers
- Outdoor freestandings
- Outdoor fabrics

UPTIGHT

FULL DETAILS

Main Salon

- (1) TV 49" Samsung Smart TV/LED
- (1) Denon amplifier- (7) 180W Airplay/Web Radio/FM Radio/Dual Zone
- (5) Speakers B&W 130W in ceiling, white
- (1) PSB Subwoofer amplifier 280W
- (1) Apple TV 32GB
- (1) T1 Telephone Jacob Jensen
- (1) Lift electric for 50" + flap/remote control
- (1) Rack mountable rotary in local for device

Owner Cabin

- (1) TV 40" Samsung/Smart TV/LED
- (1) Denon Amplifier- (7) 180W/Airplay/Web Radio/FM Radio/Dual Zone
- (2) Speakers B&W 130W in ceiling, white
- (1) PSB Subwoofer amplifier 280W
- (1) Apple TV 32GB
- (1) T1 Telephone Jacob Jensen
- (1) Rack mountable rotary in local for device

Second Owner Cabin Forward

- (1) TV 40" Samsung/Smart TV/LED
- (1) Apple TV 32GB
- (1) Telephone Jacob Jensen

VIP Cabin Port

- (1) 40" Samsung/Smart TV/LED
- (1) Apple TV 32GB
- (1) Telephone Jacob Jensen

VIP Cabin Starboard

- (1) 40" Samsung/Smart TV/LED
- (1) Apple TV 32GB
- (1) Telephone Jacob Jensen

Guest Cabin Port

- (1) TV 24" Samsung/Smart TV/LED
- (1) Bracket adjustable
- (1) Apple TV 32GB
- (1) Telephone Jacob Jensen

Guest Cabin Starboard

- (1) TV 24" Samsung/Smart TV/LED
- (1) Bracket adjustable
- (1) Apple TV 32GB
- (1) Telephone Jacob Jensen

UPTIGHT

FULL DETAILS

Main Deck

- (1) Sonos Connect Airplay/Web Radio/IOS-Android
- (4) Sonance Marine Speakers 130W in ceiling
- (1) Powermach Bose (8) 250W Digital/Multichannel

Upper Deck

- (1) Sonos Connect Airplay/Web Radio/IOS-Android
- (4) Sonance Marine Speakers 130W in ceiling
- (1) Subwoofer JL Audio 250W, white in wall
- (1) Powermach Bose (8) 250W Digital/Multichannel

Sun Deck

- (1) Sonos Connect Airplay/Web Radio/IOS-Android
- (4) Sonance Marine Speakers 130W in ceiling
- (1) Subwoofer JL Audio 250W, white in wall
- (1) Powermach Bose (8) 250W Digital/Multichannel

Wheelhouse

- (1) Sintoampli Denon
- (2) 55W Airplay Bluetooth/Web Radio/USB
- (2) Speakers Sonance 80W, white in ceiling
- (1) Telephone Master Panasonic with display

Galley

- (1) 40" Samsung/Smart TV/LED
- (1) Apple TV 32GB
- (1) Telephone Jacob Jensen

Crew Mess

- (1) TV 24" Samsung/Smart TV/LED
- (1) Bracket adjustable
- (1) Apple TV 32GB
- (1) Telephone Jacob Jensen

UPTIGHT

FULL DETAILS

WiFi

- Switch-48P: ICX7150 Ruckus Managed-Layer 3
- Switch-12P: ICX7150 Ruckus Managed-Layer 3
- Access-Point: Ruckus Dual Band

Router for External Connections

Peplink Max-TST-SUO-Model

- (1) Port WAN
- (1) Port LAN
- (2) Port WAN Access Point
- (2) Slot SIM GSM/LTE+MIMO
- (1) GPS Integrated
- Automatic signal better
- APN-Loaded Telephone operators
- Intuitive Interface for control
- Remote support

Telephone System

- Gateway Quad-band for external call
- Telephone master Panasonic
- PABX Panasonic
- Phone analog Jacob Jensen

CCTV System

- CCTV Display
- DVR HDCVI/IP Port RS485
- Video out HDMI/Mouse
- IP Network

Antennas

- GSM Telephone
- (2) GSM Network
- Tracvision TV6-KVH
- FM Receiver
- (2) WiFi Client
- Radome HD11
- Radome SAT 11
- Starlink

UPTIGHT

NAVIGATION EQUIPMENT

- Hatteland display 24" - approved for Furuno Radar-Navnet - Bonded touch screen version; Power supply 24VDC/115-230 VDC; Cavo DVI SLD M/M 10mt
- Furuno Main Radar ARPA Far - 12 kW - IMO Version - Max range 96nm - Arpa 200 target - AIS 2000 target -Power supply 220 VAC; Radiator 6.5 ft for far; Cable 50m Cavo 50m far
- Furuno Navnet TZT Black Box - Multifunction System - 12-24VDC, Remote Control Unit; Extender USB; Special Network Cable PVC Cat.6 for Navnet 3D/TZT Network; LAN Cable Assembly MOD; Plug Tel. 8 poli RJ45 Schermato; Cavo HDMI - DVI 10m
- Furuno Digital Radar Sensor for Navnet - Antenna Radar open array 6 kW X-Class 120nm - Power supply 12/24 VDC; DRS6A X-Classwithout Radiator and Cable; Antenna Radiator Assembly; Cable for Radar 30m
- Mapmedia Chart - Mediterranean Coverage for TZ SW and Navnet - Chart unlock codes vector
- Maxsea Navigation PC & Timezero Maxsea - Chart System - PC Wallmount 300 PC Box - Trackball Control Unit; Extender USB CAT-5; Buffer NMEA in/out Config. 4 in/2 out USB; Desktop Switch; Timezero Professional
- Furuno GPS Color Display - GPS Navigator - Power supply 12-24 VDC; Multi Distributor; Cable Assembly; Cavo Coax Broad Pro; Special Connector for Broad Pro Coax cable; Deckmount stainless steel
- Simrad Autopilot IMO Approved - Wheelmark - Computer Autopilot display; Heavy-Duty Feedback unit; Cables & Connector NMEA 2000 kit
- Furuno AIS Class B Transponder - Power supply 12-24 VDC - Deckmount stainless steel; Navy/VHF Antenna 1.2 m; Base Inox per Antenna; Banten 1" gas pipe adapter; Cavo Coax; Special Connector for Coax cablebroad pro; Cavo Coax broad pro
- Furuno Network Sounder Black Box & Transducer - Network Sounder; Transducer Fur. 50/200 KHZ 1kW; Fairing Black Transducer; Special Network Cable for Navnet; Plug Tel. Shielded
- Furuno Professional Hub for Navnet Network - Ethernet Hub Furuno
- DST Sensor Back Up Echo Sensor & Log Sensor - Smart Sensor Furuno; Bronze Thru-hull kit; Junction Box kit; DC/DC Converter; Cables & Connector NMEA 2000 kit
- Furuno Data Repeters & Wind Sensor - Remote Display; Junction Box; DC/DC Converter 24/12 VDC; Wind Transducer; Installation Materials; Converter Cable & Connector NMEA 2000 Kit
- Furuno Satellite Compass - Wheelmark - Cavo Coax Broad Pro; Special Connector for broad pro coax cable; Multi Distributor; NMEA Data Converter
- Furuno Flusgate - Back Up Reading - Integrated Heading Sensor
- Venus Magnetic Compass - Wheelmark

UPTIGHT

COMMUNICATION EQUIPMENT

- Furuno Main VHF - Wheelmark & Antenna Kits - Radiotelephone VHF Furuno; Flush mount kit; VHF Antenna AC Marine; Deckmount stainless steel; Cavo Coax; Special Connector for Coax Cablebroad Pro
- Furuno Secondary VHF & Antenna Kit - Marine VHF Radiotelephone; DC/DC Converter; VHF Antenna AC Marine; Deckmount stainless steel; Cavo Coax
- Furuno VHF Remote Station for Crew Mess - Remote Handset, Extension cable
- Ocean Signal EPIRB with GPS automatic - Wheelmark
- Ocean signal SART - Wheelmark
- Ocean Signal Handheld VHF - Wheelmark
- HP Printer

UPTIGHT

OTHER

Exclusions

*Name rights reserved and “UPTIGHT” is non-transferable to new ownership.

- Any items embroidered or personalized “UPTIGHT”
- All fishing equipment and supplies
- Excess tools, including standard tool kit but not the owner specialized tools, electric & Network tools and batteries
- Owner’s custom China & Serving items (wine and water glasses along with spares are included)
- Owner’s Art (only 2 items)
- Owner’s wine, alcohol and food
- Owner’s loose appliances
- Owner’s Timezero account (it is linked to 5 other boats)

Included

- All linens on board
- Soft goods like pillows, decorations, etc.
- (6) Dock lines 1.25 inch
- (2) Shore power cords with Hubbel ends

UPTIGHT



UPTIGHT



UPTIGHT



UPTIGHT



UPTIGHT



UPTIGHT



UPTIGHT



UPTIGHT



UPTIGHT



UPTIGHT



UPTIGHT



UPTIGHT



UPTIGHT



UPTIGHT



UPTIGHT



UPTIGHT



UPTIGHT



UPTIGHT



UPTIGHT



UPTIGHT



UPTIGHT



UPTIGHT



UPTIGHT



UPTIGHT



UPTIGHT



UPTIGHT



UPTIGHT



UPTIGHT



UPTIGHT



UPTIGHT



UPTIGHT



UPTIGHT



UPTIGHT



UPTIGHT



UPTIGHT



UPTIGHT



UPTIGHT



UPTIGHT



UPTIGHT



UPTIGHT



UPTIGHT



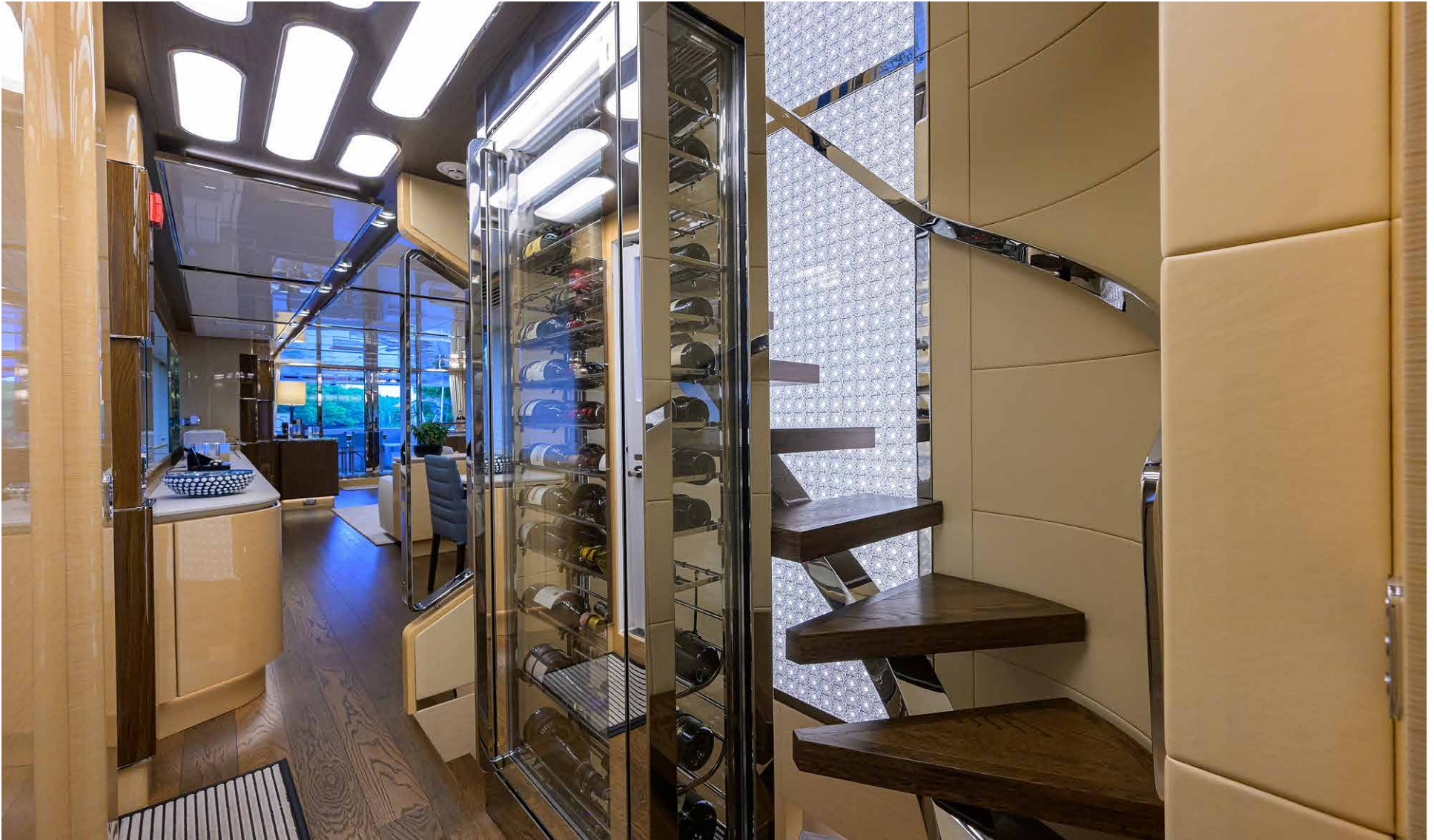
UPTIGHT



UPTIGHT



UPTIGHT



UPTIGHT



UPTIGHT



UPTIGHT



UPTIGHT



UPTIGHT



UPTIGHT



UPTIGHT



UPTIGHT



UPTIGHT



UPTIGHT



UPTIGHT



UPTIGHT



UPTIGHT



UPTIGHT



UPTIGHT



UPTIGHT



UPTIGHT



UPTIGHT



UPTIGHT



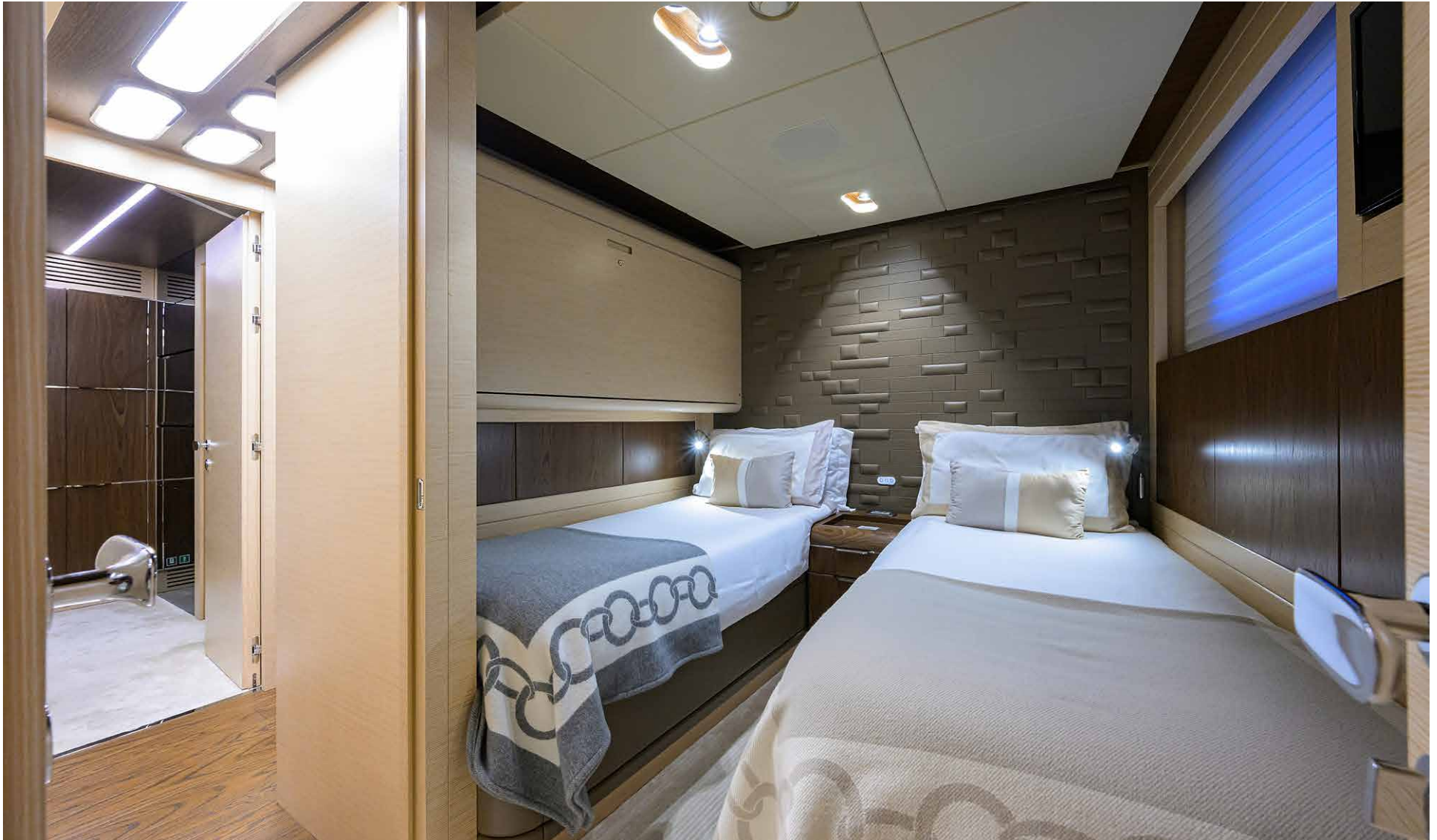
UPTIGHT



UPTIGHT



UPTIGHT



UPTIGHT



UPTIGHT



UPTIGHT



UPTIGHT



UPTIGHT



UPTIGHT



UPTIGHT



UPTIGHT



UPTIGHT



UPTIGHT



UPTIGHT



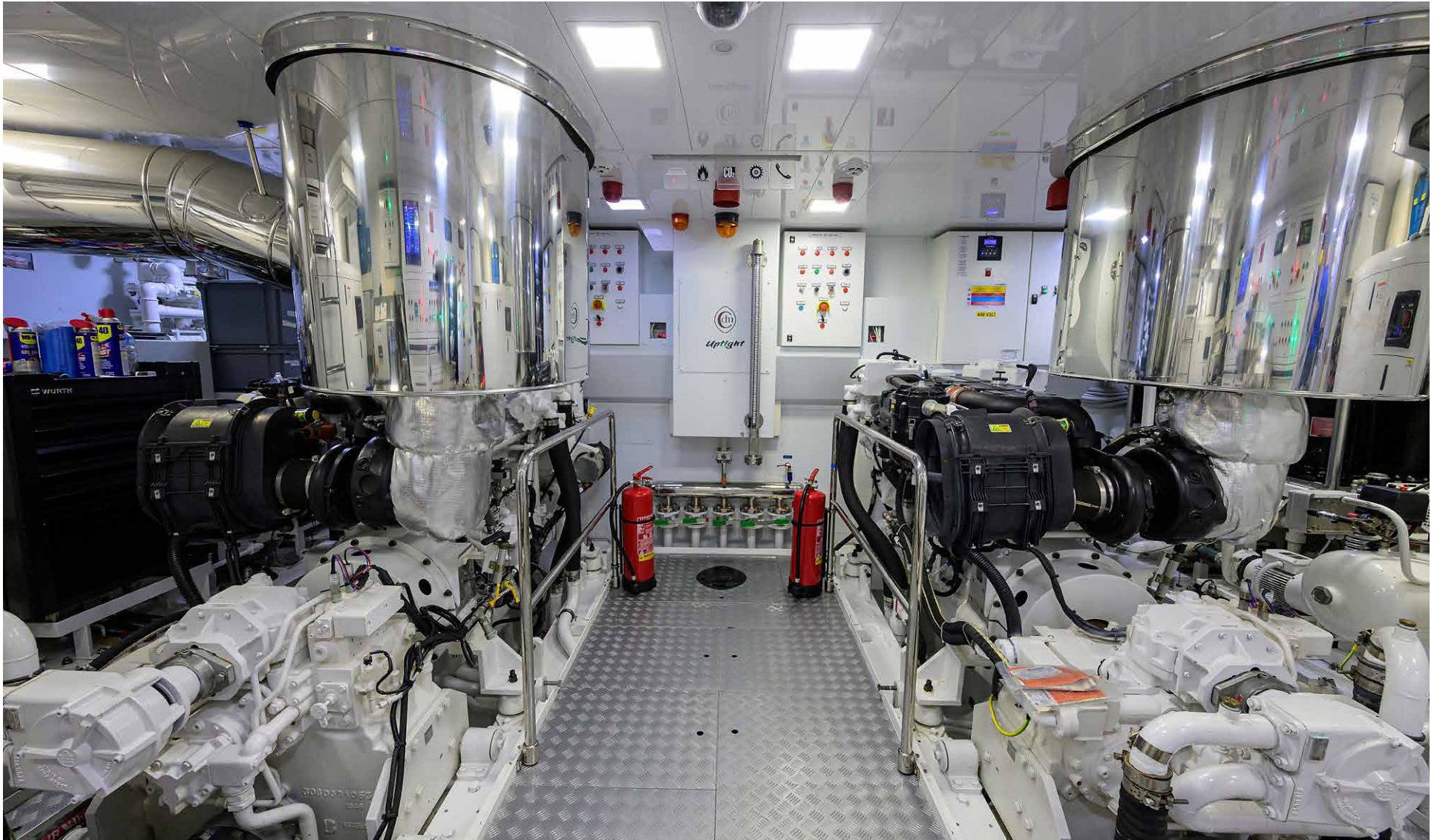
UPTIGHT



UPTIGHT



UPTIGHT



UPTIGHT



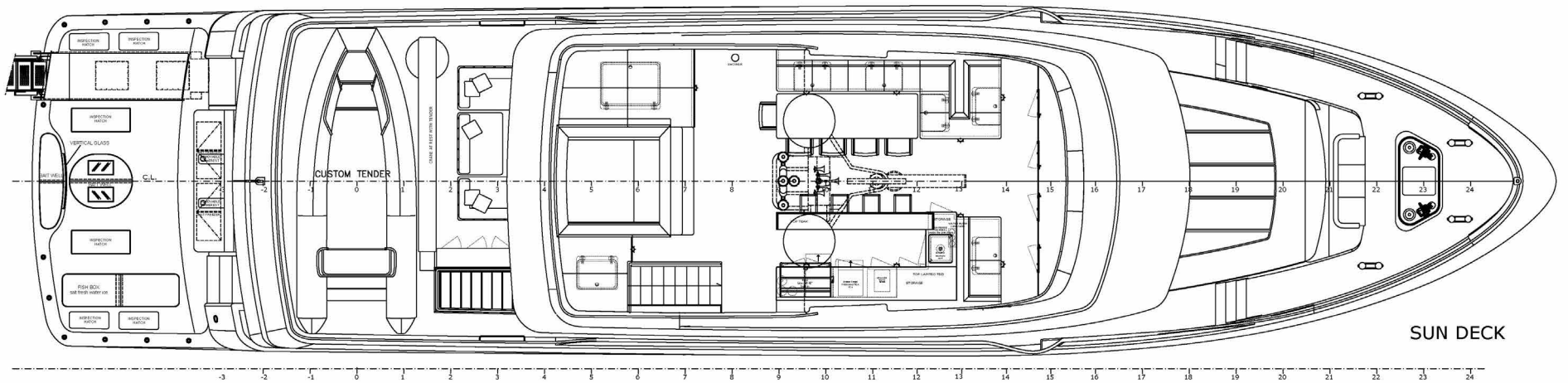
UPTIGHT



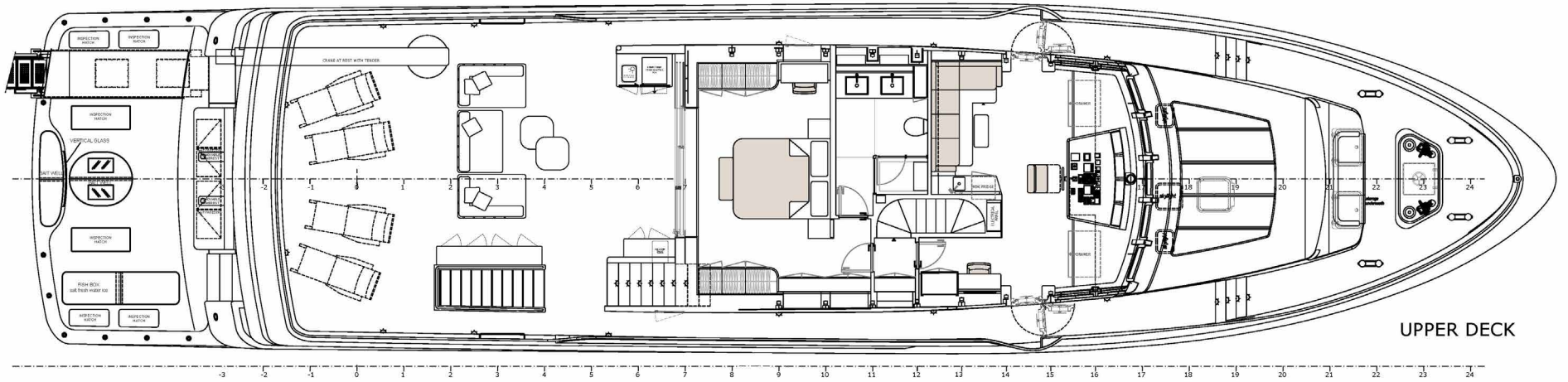
UPTIGHT



UPTIGHT



SUN DECK



UPPER DECK

UPTIGHT

106' CANTIERE DELLE MARCHE | 2022
