

# ABOVE + BEYOND

65M TURQUOISE | 2028

ASKING PRICE: POA



ABOVE<sup>+</sup>BEYOND  
by BANNENBERG ROWELL

TURQUOISE BANNENBERG  
YACHTS ROWELL  
DESIGN

# ABOVE + BEYOND

Asking Price

**PRICE ON APPLICATION**

Length

**65 m/213 ft**

Beam

**11.2 m/36.7 ft**

Cruising Speed

**12 knots**

Max Speed

**16 knots**

Classification

**Lloyd's Register of Shipping; +100 A1 SC Yacht Mono G6, +LMC, UMS**

Guests

**Owner's Suite + Private Deck + Office (6) Guest Cabins - Sleeps 14 Guests**

Crew

**(1) Captain Cabin, (2) Officer Cabins, (7) Double Cabins - Sleeps 17 Crew**

Engines

**(2) Caterpillar 3512C, C-Rating, 2x 2012 Bhp (1500 kW)**

Year / Built

**2028 Turquoise**

Draft

**3.15 m/10.3 ft**

Range at Cruise Speed

**4,500 nm**

Exterior Designer

**Bannenberg & Rowell**

Hull Construction

**Steel**

Stabilizers

**Naiad AtRest / Quantum Zero Speed**

Generators

**(3) Caterpillar 175 kW (or 2x 175 kW + 1x 150 kW)**

Location

**Istanbul, Turkey**

Gross Tonnage

**Approx. 1,400**

Naval Architect

**Turquoise Yachts**

Interior Designer

**Bannenberg & Rowell**

Superstructure Construction

**Aluminum**

# ABOVE + BEYOND

---

## KEY FEATURES

- Interior & Exterior Design by Bannenberg & Rowell
- 7 Cabin Layout sleeping 14 guests + 17 Crew
- Owners suite located on the upper level complete with private study & uninterrupted 270° views
- Expansive Beach Club with sauna, steam shower, massage room, gymnasium and lounge area
- Fold down balconies complimenting the gym & beach club
- Glass bottom pool located on the main deck aft which allows natural light into the beach club below
- Elevator servicing the sundeck, bridge deck and main deck with guest accommodations
- Custom Crow's Nest elevator that travels up the mast for private 360° views
- Commercial grade galley with extensive cold storage with walk in refrigerator & freezers for extended cruising
- To be built on Turquoise's hull platform with 11.2 m beam
- Impressive volume of approx. 1,400 gross tons
- 4,500 nm range

# ABOVE + BEYOND

---

## ABOUT

ABOVE & BEYOND is the culmination of years of planning with the idea of presenting a truly bespoke global explorer that combines timeless designs with features one would expect on a custom new construction project aimed at modern day yachting. ABOVE & BEYOND brings together two of the most iconic names in the yachting industry – TURQUOISE SHIPYARD, one of the world's premier builder of custom yachts and the most well known & established shipyards in Turkey with BANNENBERG & ROWELL, a name immediately associated with tradition, excellence and pedigree.

The name ABOVE & BEYOND represents a series of two custom projects to be built at Turquoise Shipyard with ABOVE being the first to come to market. ABOVE being a 65m project and BEYOND being a larger 80m project. Each project is uniquely their own yet draws from common profile lines, interior styling & décor. Each mean to inspire and each based on well established hull forms that have been proven over the years. This assures that the engineering has been advanced allowing for a faster delivery period, yet still allows the client to customize their final design taking key features from ABOVE or BEYOND to make the end product uniquely their own.

ABOVE brings together 14 guests spread across 7 cabins with the 6 guest accommodations located on the main deck with the master suite situated on the upper level. The flow of the main deck is the heart of the vessel allowing guests to seamlessly transition from their private quarters to the main salon & formal dining areas. This salon transitions into two key areas onboard that help define the yacht with the first being the main deck aft area with substantial lounge areas with the focal point being a massive pool with glass bottom which allows plenty of natural light to fill the beach club below. The expansive area is more than just any beach club – it's a wellness area with sauna, steam shower, massage room and full gymnasium with balcony where you can relax after exercising or receiving a spa treatment. Then you have your lounge area complete with full service bar, sitting area, built in lounge area and balconies complimenting each side. With the transom door opened, balconies deployed and you have a truly inspiring space that can be utilized by the builder in endless configurations. And that's the beauty of ABOVE & BEYOND, it challenges clients to go above and beyond to create a truly bespoke custom build.

# ABOVE + BEYOND

---

## ABOUT

Returning to the interior we can take the full service elevator which services the main deck, upper & sundecks and arrive at the bridge deck. Here we find the master cabin situated all the way forward utilizing 270 degree panoramic views complimented by private owner study, dressing room and ensuite. Back aft is the sky lounge and on the exterior the primary alfresco dining area onboard which I feel is destined to be the most popular dining area onboard.

Regarding the crew accommodations and ease of operation & flow from one deck to another, this was at the forefront of the conversation when designing the layout of the vessel. Crew can flow from one deck to another with ease, each deck has a substantial pantry for maximized service levels. A commercial grade galley with expansive refrigeration & walk in freezer spaces, walk in pantry allows for provisioning for extended cruising. There are proper laundry facilities, crew gym, oversized crew mess – all aimed at keeping everyone happy when traveling onboard, not just the owner & his guests but the crew which I feel is equally important.

A final bespoke touch by Bannenberg & Rowell is the 'Crows Nest' which is a custom designed platform that climbs the height of the mast allowing for 360 degree views. Imagine using this feature when cruising the polar regions, or docked in Port Hercule for the Monaco Grand Prix. Such a great touch and something that I feel summarizes the goal of ABOVE & BEYOND. Two projects uniquely their own aimed at inspiring a buyer who wants the absolute best.

We hope this inspires you. We hope this captures your imagination. And we would be blessed to be involved in making a dream or a vision become reality.

Go ABOVE & BEYOND.

# ABOVE + BEYOND

---

## 1. THE ABOVE + BEYOND CONCEPT

Yachting horizons have broadened.

A new or maturing owner is as likely to cruise Antarctica as the playgrounds of the Med. The environment on board should provide comfort, security and sanctuary, while inviting those dynamic landscapes inside, both physically through material, and emotionally, through vision, form and light.

Our designs will provide synergy with the exterior environment: Natural flamed stone coupled with oiled timber finished and elemental features and themes, such as fire, cast glass and coastal tones.

Beginning with the 65m model we will:

- Develop practical options for interior living: access to the water, connected spaces, occasional reading or working areas, plenty of options for convivial dining and entertainment, small or large groups, formal and informal...
- Maximize functional utility.
- Maximize interior accommodation.
- Consider foredeck mounted tenders to optimize interior GT.
- Reference and competition yachts have prominent glass and sightline features, either graphics or large panels. Therefore consider panoramic features and good coordination between interior views and exterior bulwarks and sheer lines.
- Maximize use of soft boundaries to interior walls to create sightlines and improve orientation on board (long architectural views).
- Consider glass bottomed pools and decks to maximize borrowed light and create dynamic signature ambiance.
- Consider maximizing glass features and sightlines from the interior.
- Adaptable/optional wellness and beauty facilities.
- Develop a signature silhouette, including surface features and recognizable stance, as a foundation for the range.

[PROJECT ABOVE](#)





# ABOVE + BEYOND

---





# ABOVE + BEYOND

---



# ABOVE + BEYOND

---



# ABOVE + BEYOND

---



# ABOVE + BEYOND

---

TURQUOISE YACHTS BANNENBERG  
ROWELL  
DESIGN



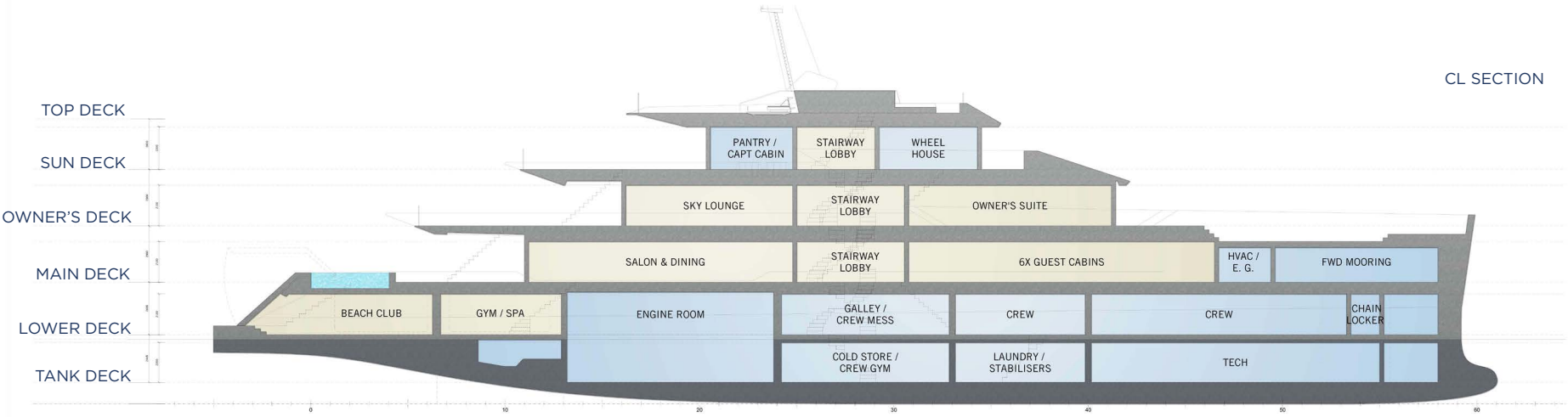
# ABOVE + BEYOND

TURQUOISE BANNENBERG  
YACHTS ROWELL  
DESIGN

PROFILE

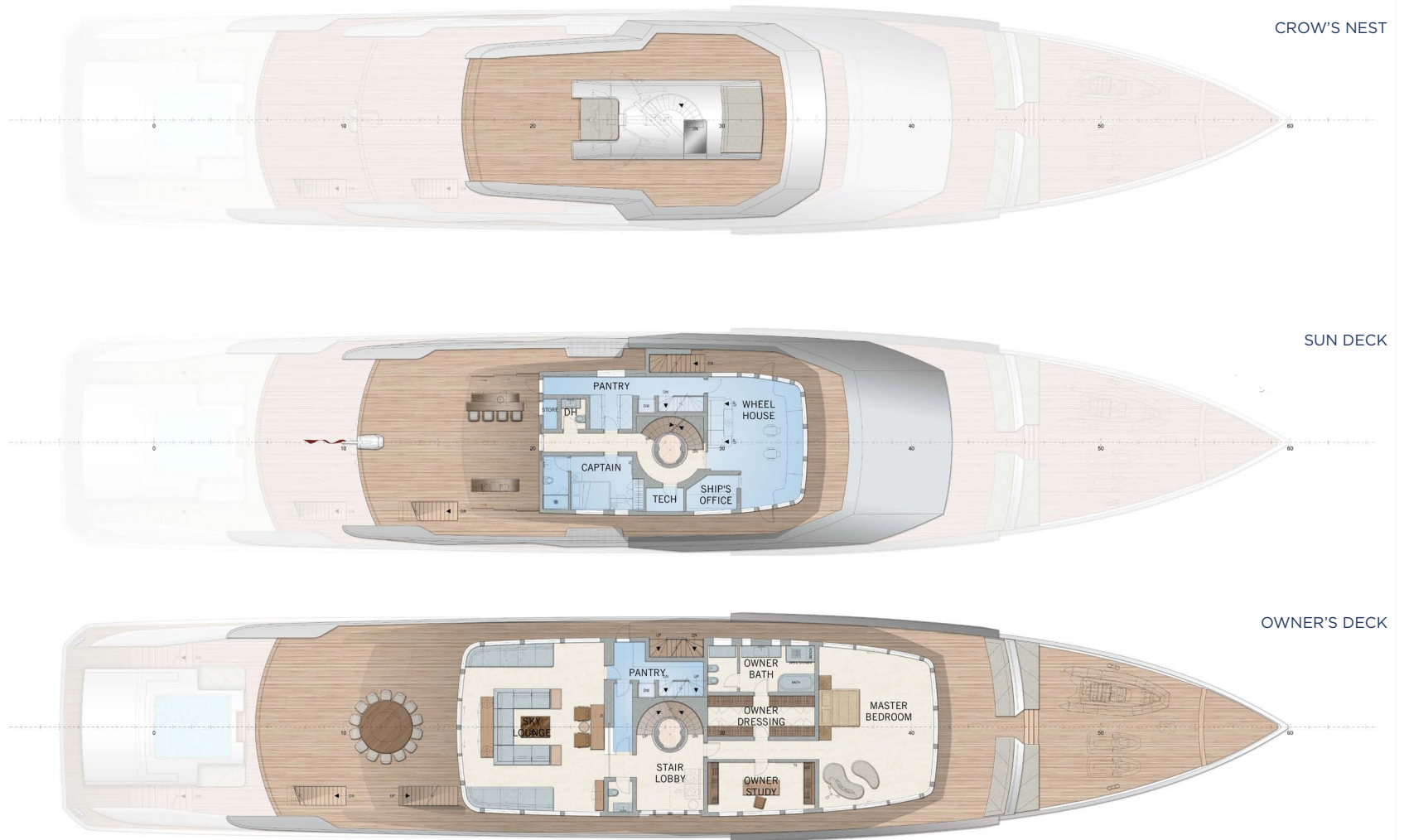


CL SECTION



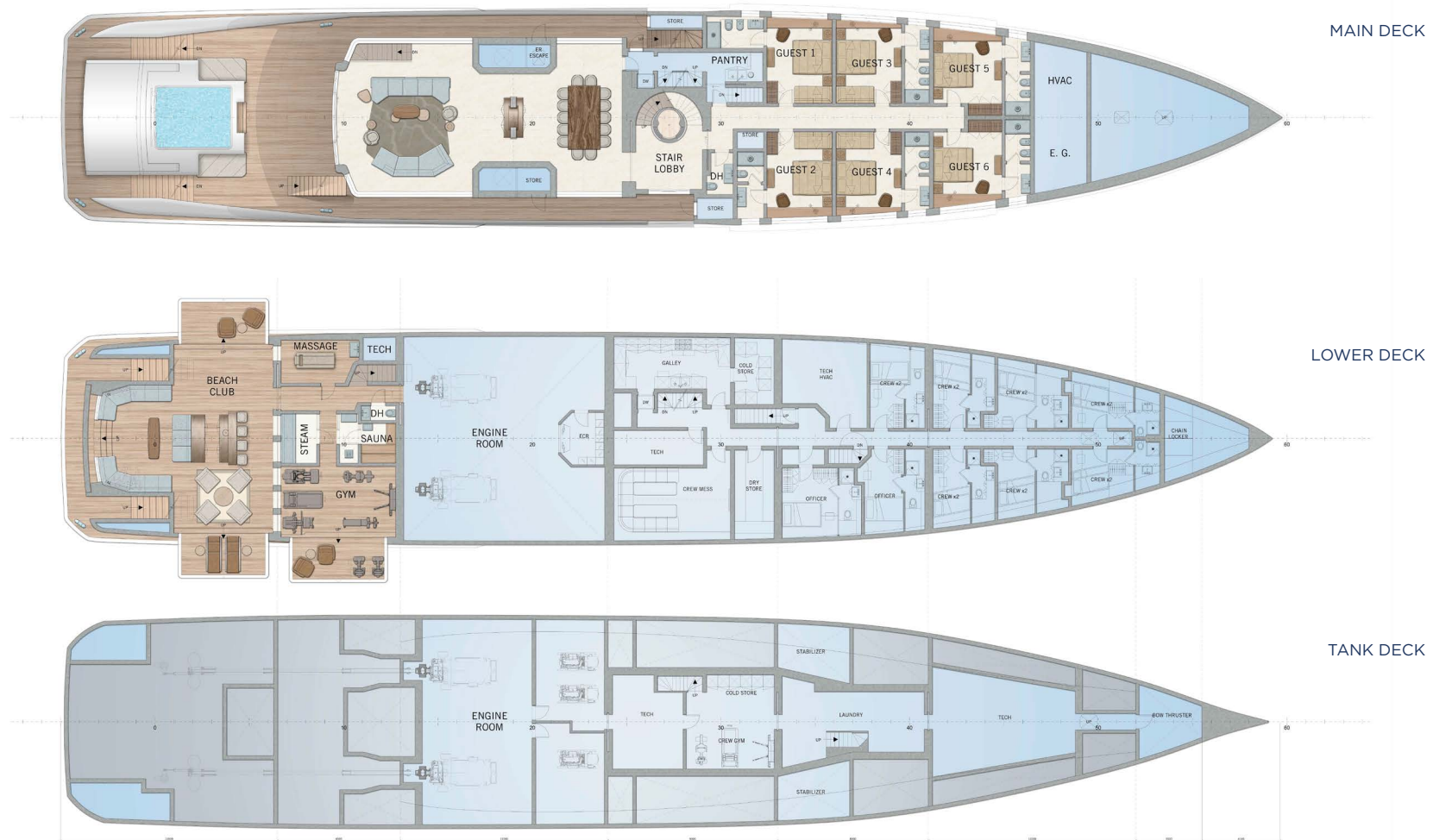


# ABOVE + BEYOND



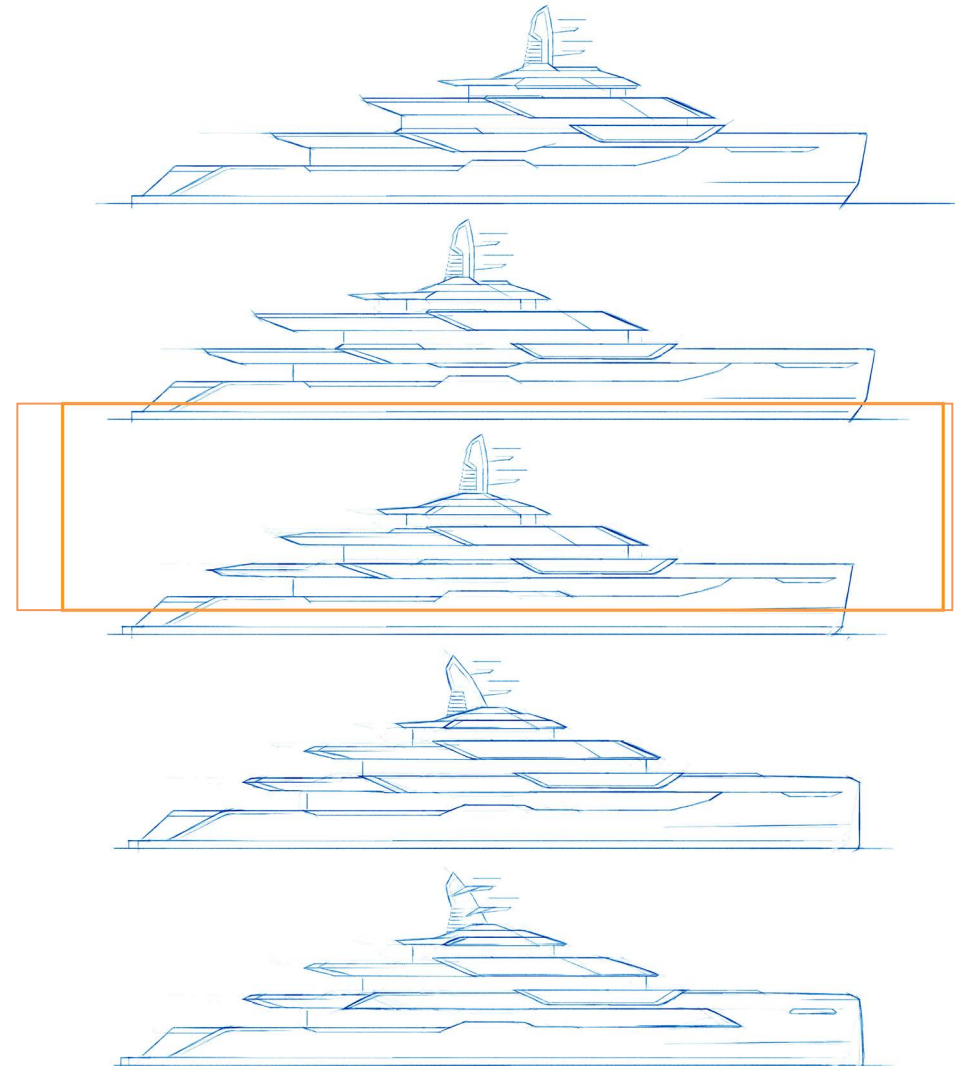
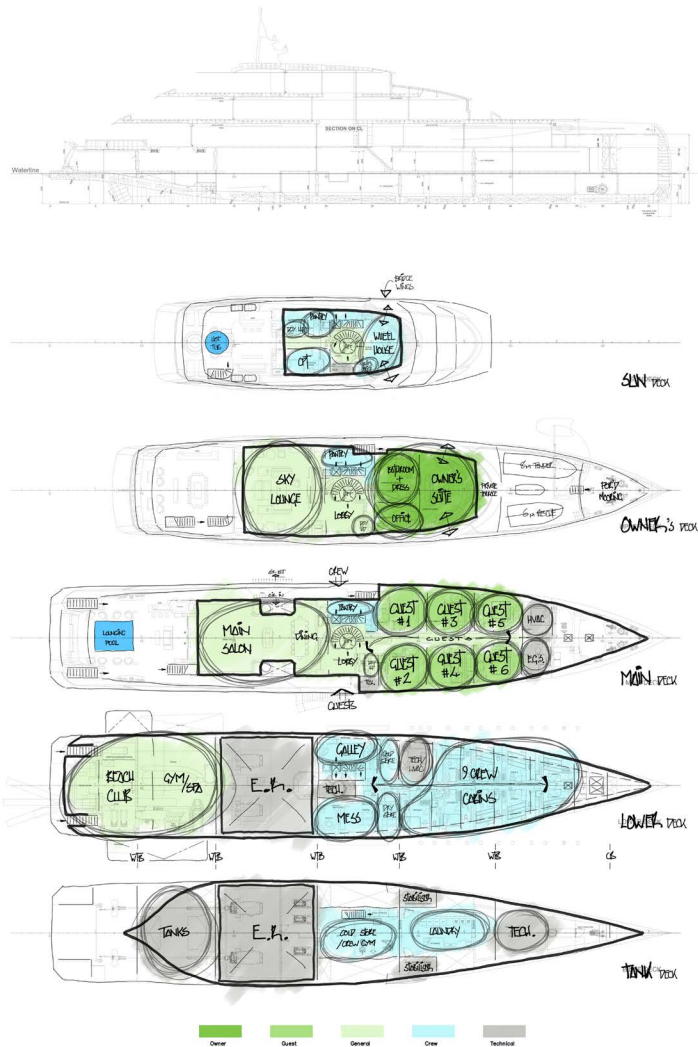


# ABOVE + BEYOND



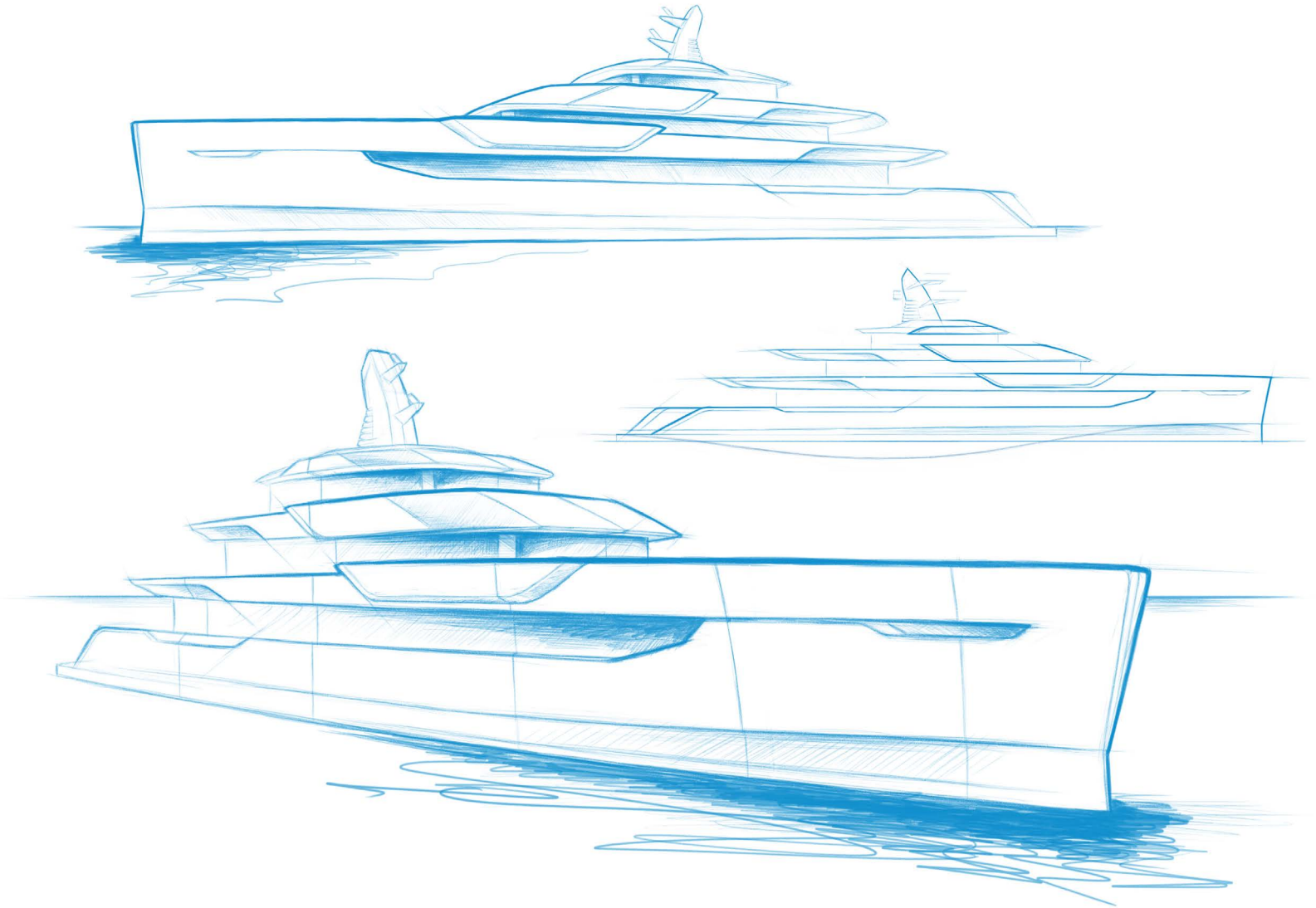
# ABOVE + BEYOND

## PRELIMINARY DESIGN DEVELOPMENT



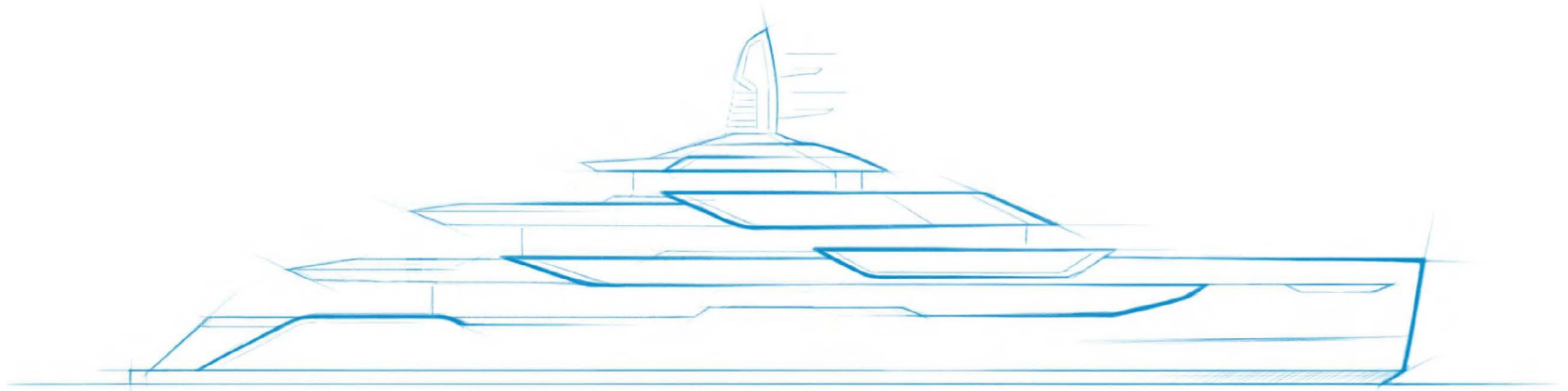
# ABOVE + BEYOND

---



# ABOVE + BEYOND

---



# ABOVE + BEYOND

---





# ABOVE + BEYOND

---



TURQUOISE BANNENBERG  
YACHTS ROWELL  
DESIGN



# ABOVE + BEYOND

---



# ABOVE + BEYOND

---



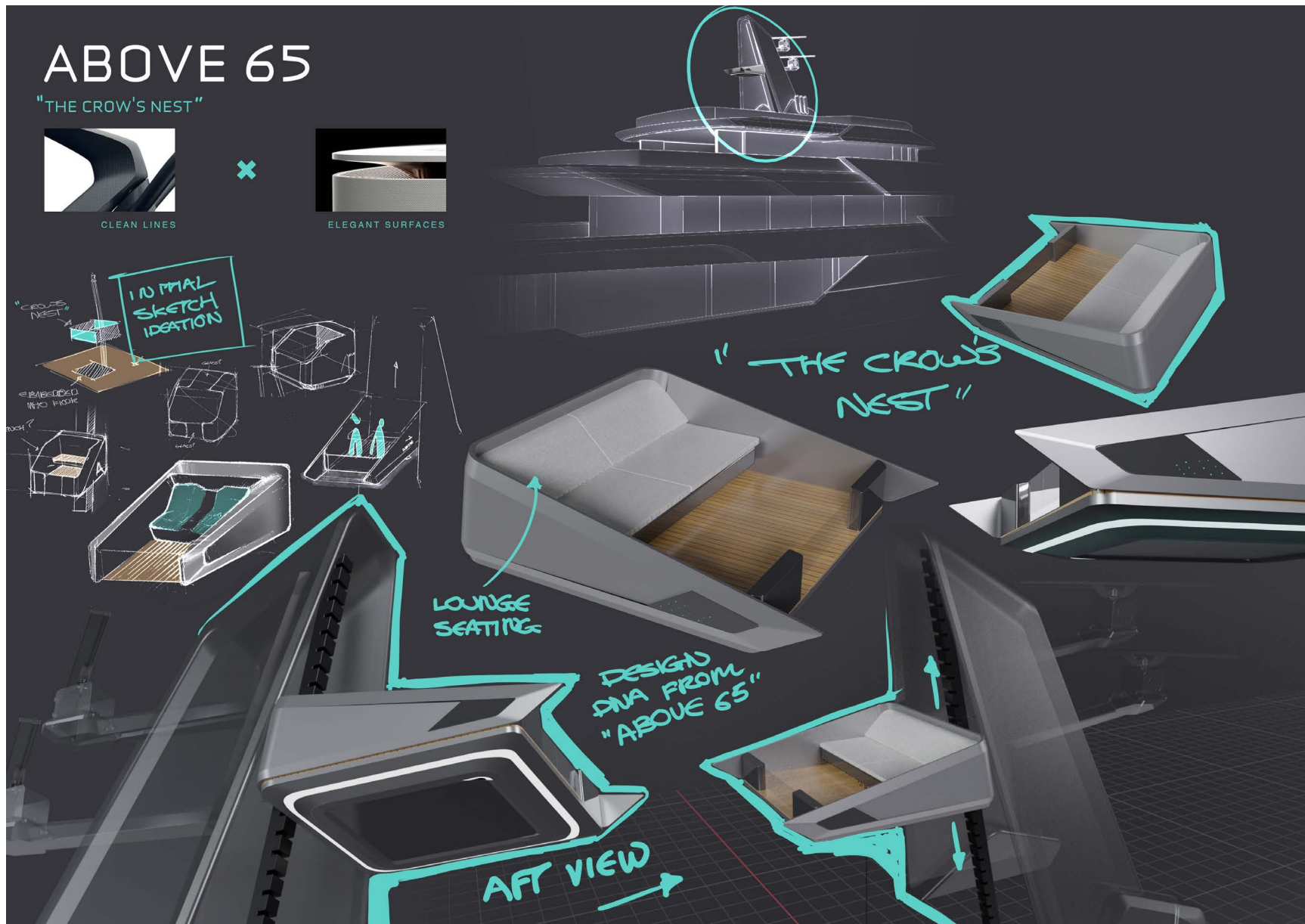
TURQUOISE YACHTS BANNENBERG  
ROWELL  
DESIGN

# ABOVE + BEYOND

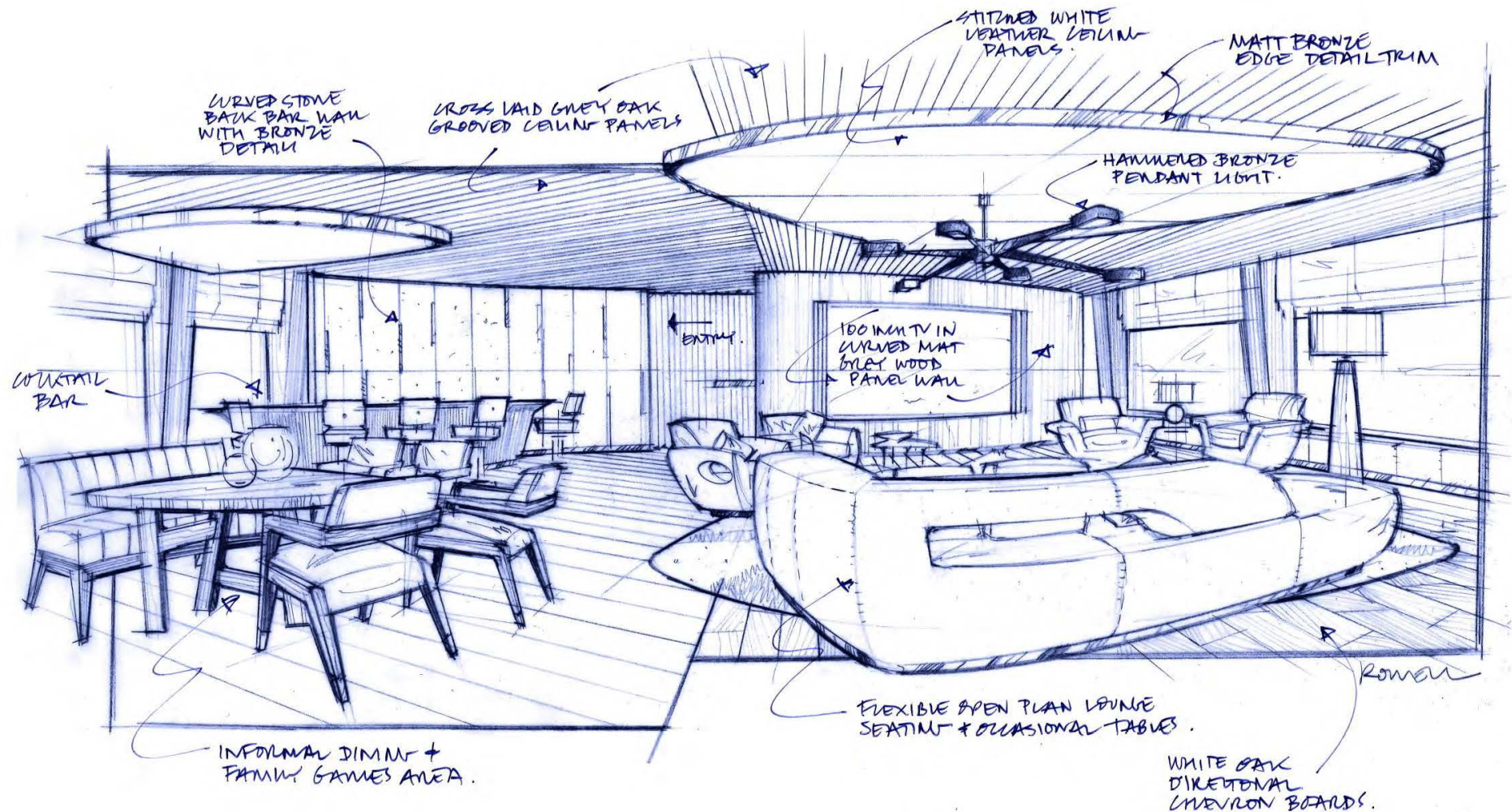
---



# ABOVE + BEYOND

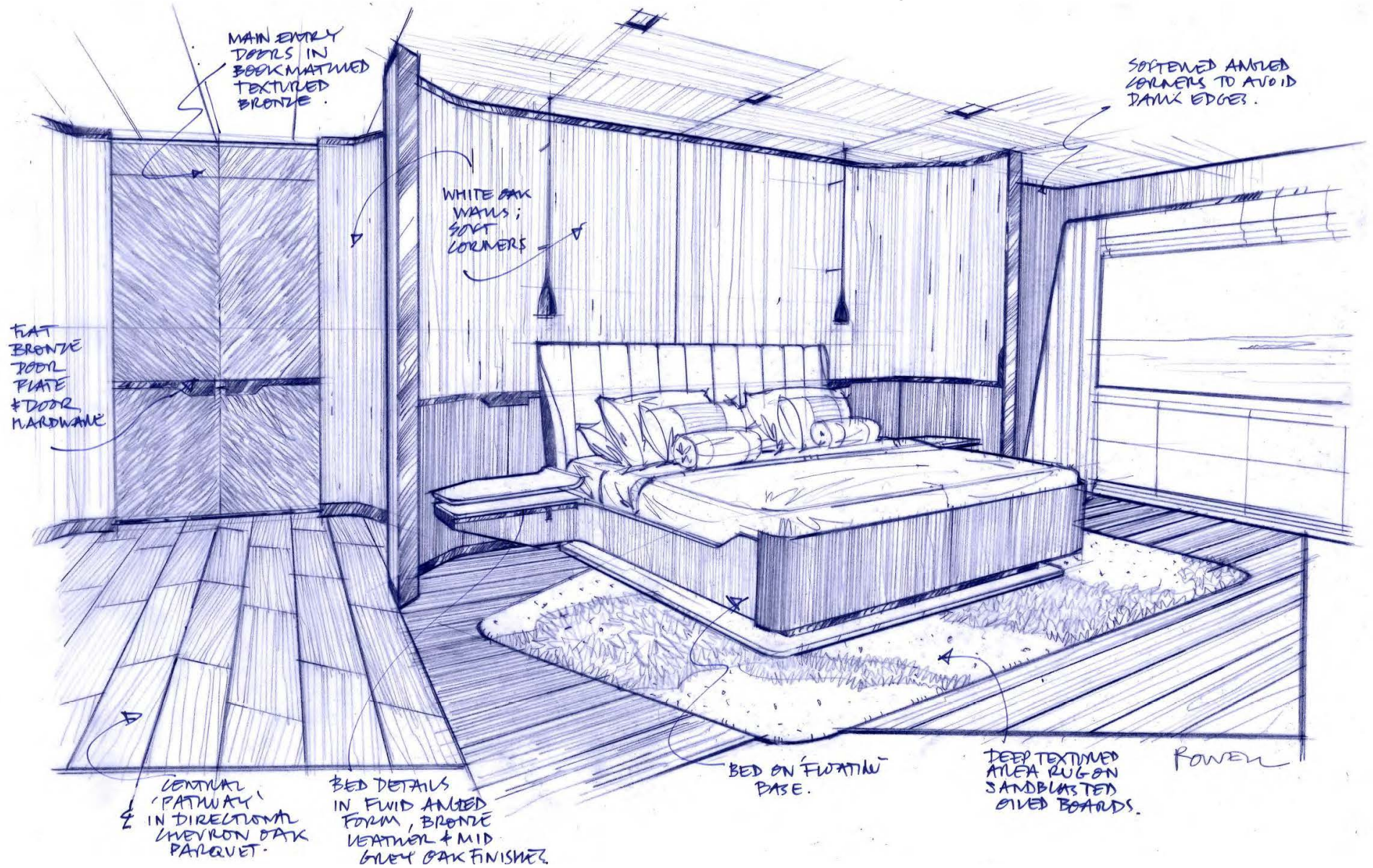








# ABOVE + BEYOND





# ABOVE + BEYOND

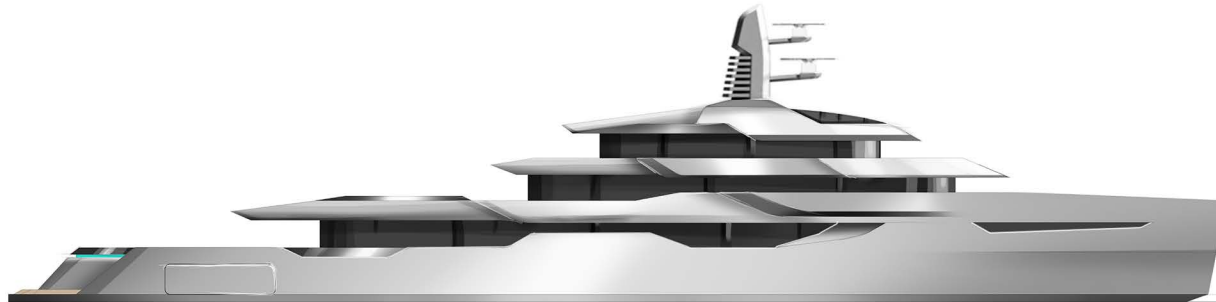
---

TURQUOISE YACHTS BANNENBERG  
ROWELL  
DESIGN

ABOVE 65



BEYOND 80



# ABOVE + BEYOND

---

BANNENBERG  
ROWELL  
DESIGN

## 2. UNIQUE HERITAGE 1957-2002

Bannenberg & Rowell Design Ltd is the direct descendant of Jon Bannenberg Ltd, the convention-breaking studio founded by Dickie Bannenberg's late father in the late 1950's.

Jon Bannenberg designed an unbroken line of the most iconic and admired yachts in the world. Often referred to as the “Le Corbusier” of yacht design, he worked with shipyards in Holland, Germany, Italy, Australia and France. Beyond yachts, Bannenberg's body of work was widespread, but focused at the very highest level, and included, first class suites and public rooms on the Queen Elizabeth 2 liner for Cunard, aircraft interiors and even bespoke car design for RollsRoyce and Jensen. He was appointed a Royal Designer for Industry in 1978.

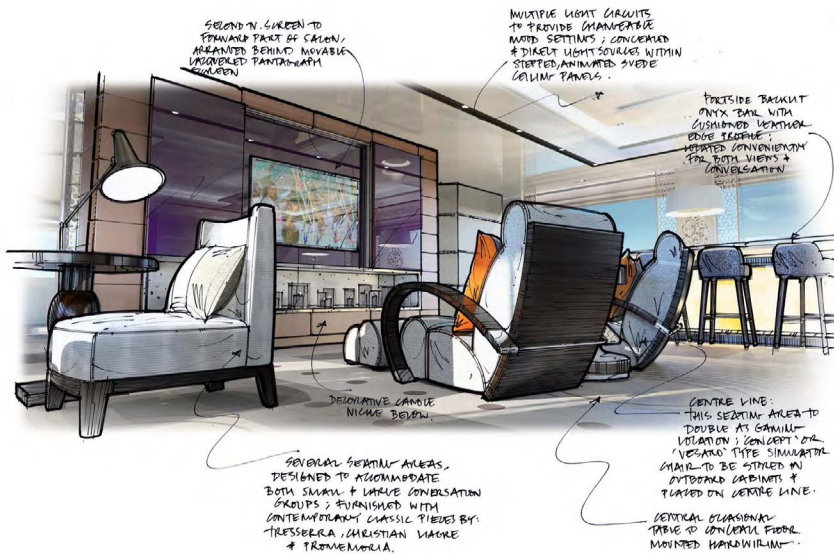
Since 2003, when the company was rebranded as Bannenberg & Rowell, the studio has delivered some forty yacht projects - new builds and refits - as well as a further twenty residential and transport projects. The studio provides both interior and exterior design services.

B& R's base is in an industrial building in Fulham, south-west London, which houses the design studio, a full soft furnishings and sampling library and the design archives dating back more than sixty years.

As the only modern, multi-generational, holistic yacht design studio Bannenberg & Rowell is truly uniquely equipped to understanding heritage.

# ABOVE + BEYOND

## 3. THE BANNENBERG & ROWELL DESIGN PROCESS



Creativity remains at the heart of the Bannenberg & Rowell Studio, and we continue to seek out new design solutions in response to a changing world and an evolving clientele.

We regularly develop and publish new design platforms which question, challenge and respond to changing life on board.

Occasionally radical, always diligently researched and engineered, these platforms go on to influence live projects, while promoting client conversations and direction at the outset of new 'blank canvas' projects.

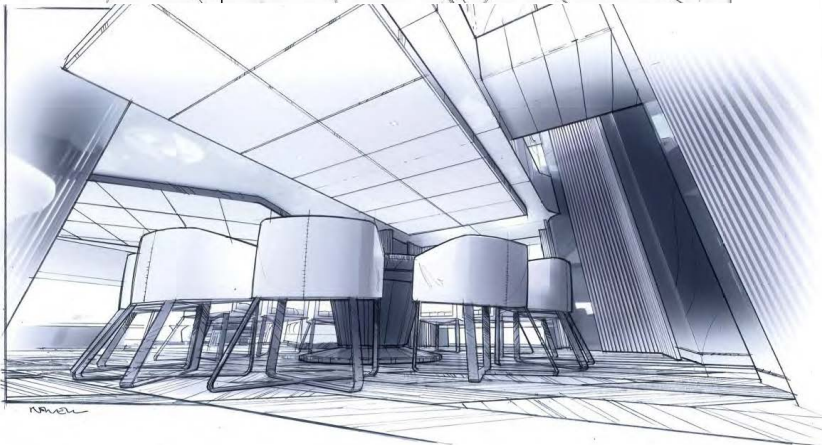
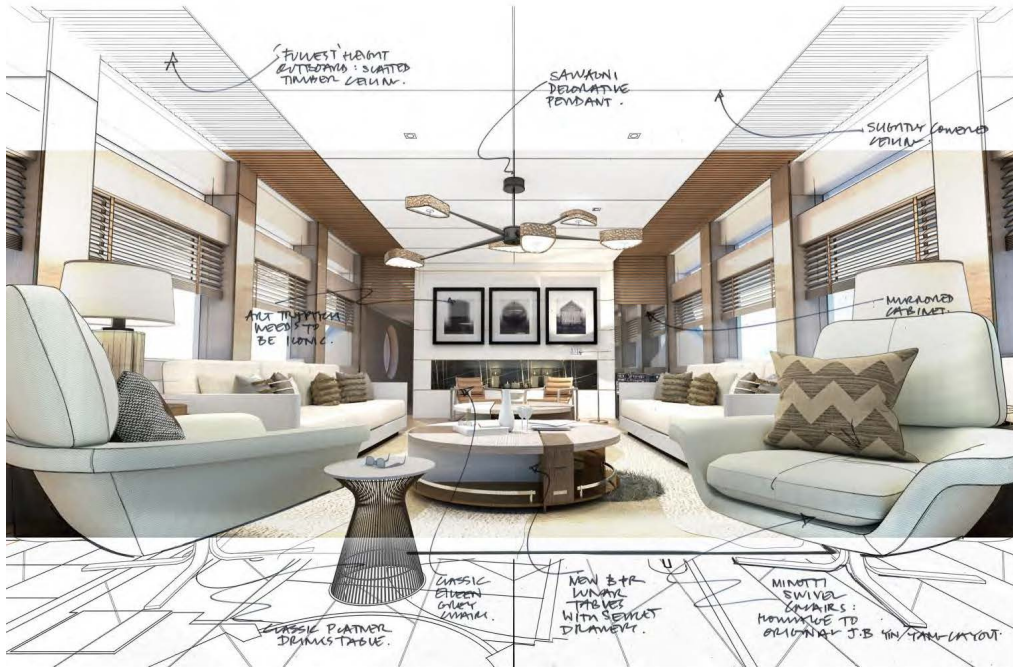
Whether questioning and solving complex circulation requirements through creative space planning, improving sight lines through sculpted interiors, or improving visual and physical connection with the outside environment, we aim to ensure every opportunity for value and experience is harvested, on behalf of client, builder and crew.



communicate our thoughts: from loose freehand sketches, through material finishes swatches, through renderings, CAD drawings, specification control sheets, and finally dressing, photographing the final yacht. We liaise with the marketing teams to devise demographically relevant and can support the sales and marketing process post completion promotion.

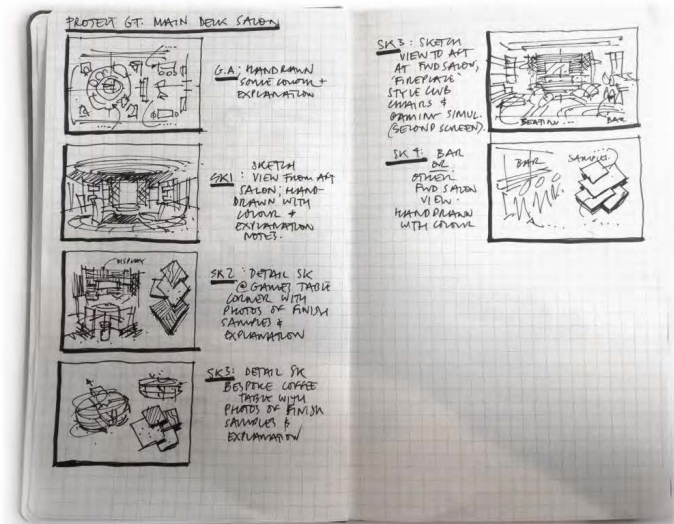


# ABOVE + BEYOND



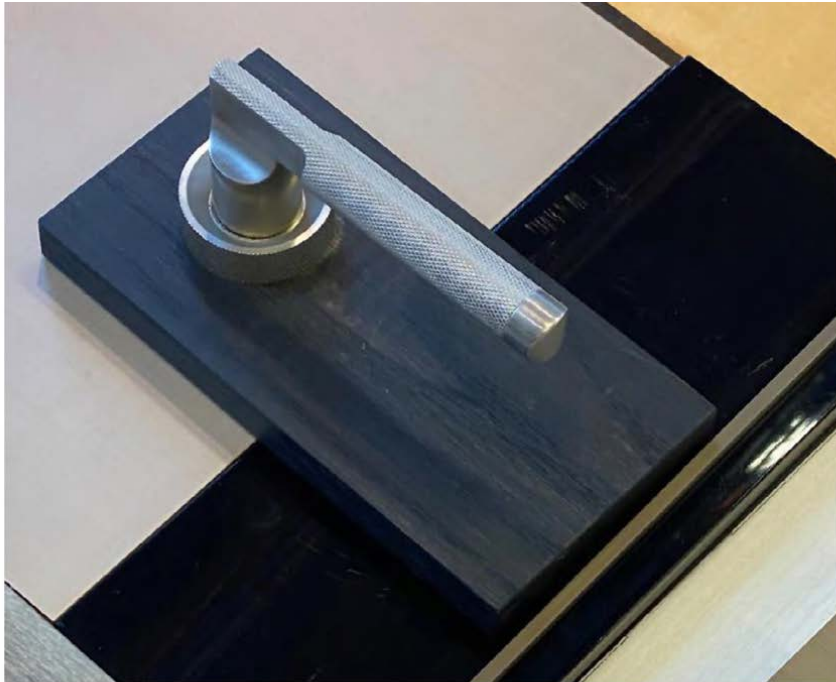
## EARLY VIEWS

Freehand, 3d modeled and hybrid presentation techniques provide step by step illustrations of the design development.



# ABOVE + BEYOND

---



## MOOD BOARDS

These represent a first sweep at some of the principal architectural hard finishes and perhaps one or two ideas of texture and colour. Once veneers, marbles and specialist finishes are finally selected, we then coordinate a detailed sampling process whereby we work closely with the shipyard's interior subcontractor to produce a range of control samples.





# ABOVE + BEYOND

---



## VISUALS

A much more intensive and detailed design development phase then follows with visuals prepared for final interior concept approval.

# ABOVE + BEYOND

---



## FURNISHINGS BOARDS

These are presented to lay out specific proposals for loose furniture, decorative lighting, upholstery, curtains and blinds etc.

The evolution of these boards into the final costed FF& (Furniture, Fixtures and Equipment) specification allows builder and/or client to generate and control loose furniture budgets.



## FF&E SPEC SHEET

Every item of loose furniture is controlled by our bespoke software package: Full ordering details, shipping details and any special instructions can be supplied, ready for client or builder to move to procurement of loose furnishings.



# ABOVE + BEYOND



## CAD DRAWINGS

Our studio is known for the detail and rigour of our design drawings. Working to the pre-agreed shipyard timetable, we produce a full set of CAD drawings for all our areas of responsibility.

The delivery of these is phased on a deck -by-deck basis and will include all the information required by the shipyard to be able to develop their own construction drawings. They are fully coded with the agreed architectural finishes and show the real space available in the interior within the constraints of the shipyard's netspace construction.

# ABOVE + BEYOND

---

**TURQUOISE**  
YACHTS

## WHY BUILD WITH TURQUOISE?

### BUILDING THE WORLD'S BEST YACHTS

#### A WORLD OF EXCELLENCE AND FLEXIBILITY YOUR YACHT IS ONE OF A KIND. SO IS YOUR BUILDER.

When we say we build fully custom yachts, we mean it. Our builds are as diverse and flexible as our Clients' desires & dreams, and our facilities are designed from the ground up to be eminently capable and flexible. Yachting is all about lifestyle: your lifestyle.

Whatever your inclination, your bespoke Turquoise will be the key to fulfil your wishes. It will be the extension of your environment across the water. Family, friends, watersports, travel, adventure, cuisine, entertainment, relaxation. Explore: your world.

#### THE COMPLETE SHIPYARD EXPERIENCE

We're not an assembly shipyard, we're a complete shipyard. Most shipyards contract out their work, from engineering to installation. We do things differently, believing that our in-house teams across design, engineering, interior, production and more help us raise quality and keep costs under control. Completely.

Organized across every discipline that outstanding yacht construction requires, this business philosophy helps ensure fast turnarounds and raises the gold standards of shipbuilding to platinum. More flexibility. More Speed. Less hassle. We out-perform, in-house.

#### BUILT TO LAST

Quality is a system, not a slogan. It starts with the best components, from engines & generators to glass & springs and continues to production, 3D modelling every nut and bolt before executing expertly on the field. Lasting quality is not hoped for: it's ensured.

#### FIRST CLASS

Today recognized worldwide for their design and build quality with multiple WSA awards to testify, Turquoise's superyachts are engineered & manufactured almost entirely in-house. The power of building in-house isn't just higher quality control from the computer to the construction shed: it means we use resources more efficiently and with more speed.

# ABOVE + BEYOND

---

## WHY BUILD WITH TURQUOISE?

### BUILDING THE WORLD'S BEST YACHTS

#### TECHNICAL SUPERIORITY

An owner aboard his yacht once asked us when we would be departing port for sea trials: imagine his shock when we informed him that we were already at sea under engine! Such an unnoticeable level of silence we achieve is just one fruit of our commitment to continuous in-house improvement through the acquisition of new technology and the development of human capital. You won't find a more technologically advanced yard than Turquoise in the region. While you might think that we do a lot of work by hand, in reality, stepping onto the grounds of a Turquoise workshop is like stepping onto a spaceship.

#### MILLIMETER BY MILLIMETER

Our “no-shortcut” philosophy is powered by high-tech tools we put at our engineers' disposal. With even the challenging engineering processes of CFD, piping and more done in-house, we make full use of our 30+ naval engineering team.

The result is a high precision product encompassing the utmost in efficiency, virtually silent in operation and offering outstanding value. No pain, plenty gain.

### TEAM: A WORLD OF DEDICATION

- 500+ Employees
- 80+ Talented Engineers & Architects
- 9 Years on average at Turquoise, for Managers
- 32% of workforce under 30

A great team of engineers. Architects and designers work together to bring clients' dreams to life. Our craftsmen bring with them generations of knowledge and heritage. Passion, hard work, dedication, experience, teamwork make the core of our success.



# ABOVE + BEYOND

---

## FACILITIES: A WORLD OF TECHNOLOGY & DISCIPLINE

A broker touring our facilities once remarked, *“This is crazy - I’ve never seen a workshop with no dust on the floor!”*

Building a superyacht to tomorrow’s standards is only possible with the best of today’s processes & technology, and that is why both our Istanbul outfitting yard and Kocaeli hull+superstructure construction yard are home to some of the most impressive workflows in the industry.

Both facilities have direct access to the sea of Marmara for initial sea trials, and the combined capacity to have 9 builds in process simultaneously.



### KOCAELI

The Kocaeli shipyard 90 minutes drive away is located just across the bay of Izmit and has capacity for yachts up to 120m.

Its main function is the completion of steel and aluminium hull and superstructure work, as well as the installation of machinery and heavy piping.

Turquoise’s yachts begin their life in Kocaeli, before being transferred via custom floating dock to Istanbul to take on their final form.

### PENDIK

Our Istanbul HQ and shipyard is an impressive 25,000 m2 landscaped location capable of accommodating yachts up to 95m in length - and is used for interior decoration and finishing work.

Turquoise’s Istanbul HQ is only 10 minutes from the nearest international airport, serving both commercial and private flights.

Arrive in the morning and leave whenever you want. The time saving makes it easier to be hands-on with your yacht.





# ABOVE + BEYOND

---

## FACILITIES: A WORLD OF TECHNOLOGY & DISCIPLINE

### THERE'S NO PLACE LIKE (OUR) HOME

Istanbul: the world's most accessible city. At the center of the global supply chain and the world's 8th most visited city, Istanbul is the border between Europe and Asia. Upscale and exciting, this makes Istanbul the perfect place to build your yacht.

Firstly, it means both Turquoise yards are directly on the sea.

This allows for multiple seatrials and rapid feedback. It also means a return for maintenance work is easy, with no complex navigational routes required and no need to leave the Mediterranean.

Further, both shipyards are surrounded by naval suppliers, shipping ports, docks and marine facilities as far as the eye can see. This makes solving problems or finding world-class supplies fast, easy.

Building a yacht is complex. There's a lot about it that's difficult. But Turquoise's location? It just makes the whole thing much smoother.

Whether it's wandering the UNESCO world heritage sites of Sultanahmet, the high-end shops in Nişantaşı and Bebek, or local spots right near the shipyard in Pendik, there's something for everybody in Istanbul.

Also nearby within the country are great spots for skiing, camping, rafting and more. As the 5th most visited tourist destination in the world, the city promises fun, adventure and great living for your build team during their time here.

Come for building, stay for leisure.

# ABOVE + BEYOND

---

## ENGINEERED: BUILDING THE WORLD'S BEST YACHTS

### THE BENEFITS ARE SUBSTANTIAL

An owner once asked us, during a sea trial at night, when we would be departing. Imagine his shock when we told him we were already underway - his yacht was just that silent! Because we keep naval architecture and engineering work in-house, we can interact with our builds and respond to your team's requests much faster than other, assembly yards. When one client wanted to make sure he would always have super-high water pressure in his shower even if every other tap on the yacht was running simultaneously, we were able to run a complete analysis, select the required equipment and modify the piping layout within a single weekend! As a matter of fact, we know that "in-house" raises quality and keeps costs under control. It enables you to enjoy the corners of the world with peace of mind.

*The technical team is very proactive and they're good communicators too!*

- Ken Freivokh

### NOT JUST WORDS

This philosophy of in-house excellence is driven by innovation. Consider that we are the only superyacht shipyard in the world to own a spray fairing machine - which reduces our lead times by up to three weeks and means we only need one worker for the whole fairing process whereas other builders need multiple. In turn, this same philosophy also drives innovation and makes possible unique features that enable epic memories. Underwater lounge? No problem. Something wilder? Can do.

### EXPERIENCE MEASURED IN CENTURIES

This young talent, working under the guidance of managers who have been with us for decades, is what makes us so capable. Some engineering processes the Turquoise team handles (such as the simulation for ensuring there are no overheating dead-zones in the engine room that will lower the reliability of a component) are ones which even some of the most advanced shipyards in the world simply cannot and do not perform.

### THERE'S NO ALTERNATIVE TO MULTIPLE ALTERNATIVES

As with lowering noise + vibration levels, much of engineering is about the comfort of the owner, guests and crew. Because we are in-house, we are able at no extra cost to engineer multiple variations and alternatives of a single system, get feedback from our field production team, and make it not only optimal in the virtual world but buildable in the real world! In some cases, this leads to inventions of our own - for example the rubber component that we use to make hanging ceilings (which prevent vibration transfer between decks) is a Turquoise invention!



# ABOVE + BEYOND

---

## ENGINEERED: BUILDING THE WORLD'S BEST YACHTS

### THE BEST MARKETING IS THE TRUTH

Every shipyard claims they turn dreams into realities. Often times, this is an inflated marketing claim. With us, it is a claim backed by hard science and real examples. Expertise in disciplines like finite element analysis, which measures the strength of a yacht under any sort of pressure or force, helps us make things possible. Case in point, we are one of the only shipyards in the world that has engineered and is actively building an underwater lounge.



### MANY RAINDROPS MAKE AN OCEAN

In other cases, it means we spend time on minute optimizations that other shipyards do not want to spend resources on - like the way we optimize our shaft brackets above class requirements for reduced drag force. A reduction in drag of less than 1% - that's enough for us to think it's worth it.

At Turquoise, we know that speed of delivery is very important, but we also know a yacht can not be delivered faster simply by adding workers to the process. Speed of delivery, just like with quality, needs to be facilitated by technology and systems, such as our spray fairing machine that we developed in partnership with AwlGrip. One capability we are proud of is that all of our 3D modelling is done in-house, something that can speed up delivery of a yacht by more than a year!

### TEAM. EFFORT.

Our matrix-organized team keeps us efficient and spots problems before they arise. A close corporation between all our departments means nothing we do is purely theoretical. Every calculation is part of a greater plan, every technical plan is executed 1:1.

There are no conflicts between the drawing and the reality or the design and the production. Innovation, engineering excellence, in-process quality control.

Out-performing, in-house. Your Yacht, The Turquoise Way.

# ABOVE + BEYOND

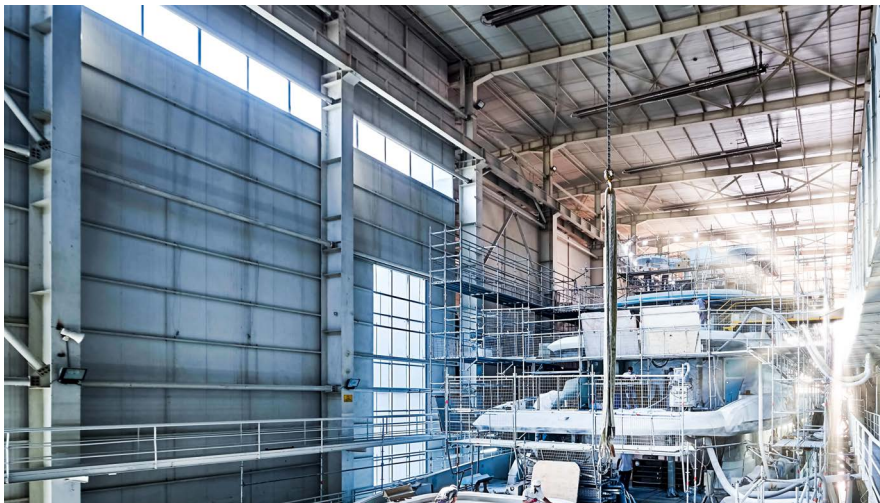
---

## CRAFTED: A WORLD WITHIN A WORLD

### EVERY ELEMENT IS CONSIDERED, EVERY MILLIMETER IS INSPECTED

The word cosmos means “order” in ancient Greek. This root gives birth to the word cosmetic: “that which achieves beauty through order”.

When we build interiors, this understanding of order and beauty as intertwined necessities comes forefront.



Great materials can only become great interiors when they are expertly crafted, finished and joined by a skilled team of specialists. Our 15+ strong in-house interior department holds itself accountable to no less than a flawless execution of a yacht's interior. Every element is considered. Every millimetre is inspected. Because quality is in perfect order – and your yacht is your universe.

An interior design starts with the layout – discovering what your priorities are, how you dream of using your yacht, how you envision living onboard, and what layout will help achieve that vision. Our focus at Turquoise Yachts is to work with designers and clients to not only maximize space onboard but to achieve seamless flow between spaces and their functionalities so that you can feel leisure, excitement and rest at the same time.

The entirety of your interior design is custom, from the carpets to the cutlery, and our in-house interior, design, engineering, production and quality teams collaborate to make sure what you see on paper is exactly what you get in real life. The Turquoise way of working means we don't just solve for a solution on a computer screen, we head through our office door and onto the production floor.

Turquoise Yacht's interior areas are known for expansiveness, flexibility of function, and “hundred-year” quality that charms & impresses. Our guiding philosophy in the use of space is to make it easier to spend your time onboard exactly the way you like.

We achieve this by meticulously planning & engineering the “behind-the-scenes” aspect of your yacht's interior, from the tiny electric motor that drives the curtains to the weight distribution of your fixed and loose furniture.



# ABOVE + BEYOND

---

## ULUTAŞ: PARTNERS FOR 25 YEARS

Ulutaş is a Turkish custom-made interior designer, producer and assembly company founded 45 years ago - and unquestionably one of the best in the world. Producing interiors for private jets and superyachts, the ultra-modern facilities over 7000 m2 nest more than 200 employees and every piece of production technology under the sun. For the past 25 years, we have had a symbiotic relationship with each other, and our cooperation has at this point become almost comparable to working in-house.

Across a wide variety of materials like veneers, marbles, leathers, metals and fabrics, Ulutaş aims for and achieves nothing but the best to meet our mission-critical Turquoise quality. Their serving of Dutch and German shipyards right out of Istanbul is merely a recognition of their quality. Along with a massive production site, they also host a design and R&D office which enhances smooth cooperation between the interior designer/shipyard and the client. While superbly skilled handcrafting plays a part in production, Ulutaş is a highly mechanized workshop. In fact, during a tour, a broker once stated it was the only woodshop he'd seen that had no sawdust on the floor! Everything from plywood shaping to paint mixing is done by the most advanced machines on the planet, eliminating the number one cause of defects: human error.

Up until now and including the Turquoise fleet, Ulutaş has completed the interior furnishing of 80 superyachts and 40 private jets.

# ABOVE + BEYOND

---

TURQUOISE YACHTS BANNENBERG  
ROWELL  
DESIGN



# ABOVE + BEYOND

---

## ABOVE AND BEYOND

65M AND 80M CUSTOM EXPLORER YACHTS

BANNENBERG  
ROWELL  
DESIGN

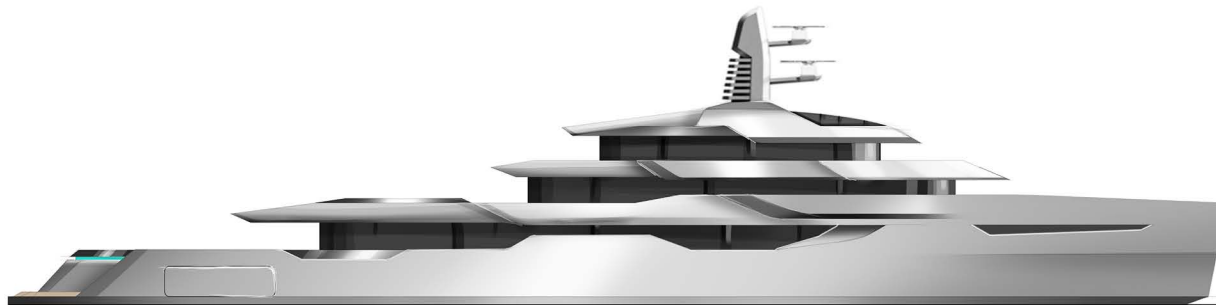
TURQUOISE  
YACHTS

Denison  
yachting

ABOVE 65



BEYOND 80



# ABOVE + BEYOND

65M TURQUOISE | 2028

---

TURQUOISE BANNENBERG  
YACHTS ROWELL  
DESIGN